

MARCH 2022



GUIDED PATHWAYS UPDATE



Our Why

Academic & Career Communities

To help a greater number of students, particularly those who are disproportionately-impacted, access course offerings, receive support & complete their educational goals

Academic & Career Communities



Launching Support Teams



helping more students feel a sense of belonging and community at CSM

LONG-TERM GOAL

To help a greater number of students, particularly those who are disproportionately-impacted, complete their educational goals via support organized within each Academic & Career Community.



identifying and connecting high-needs students with academic supports



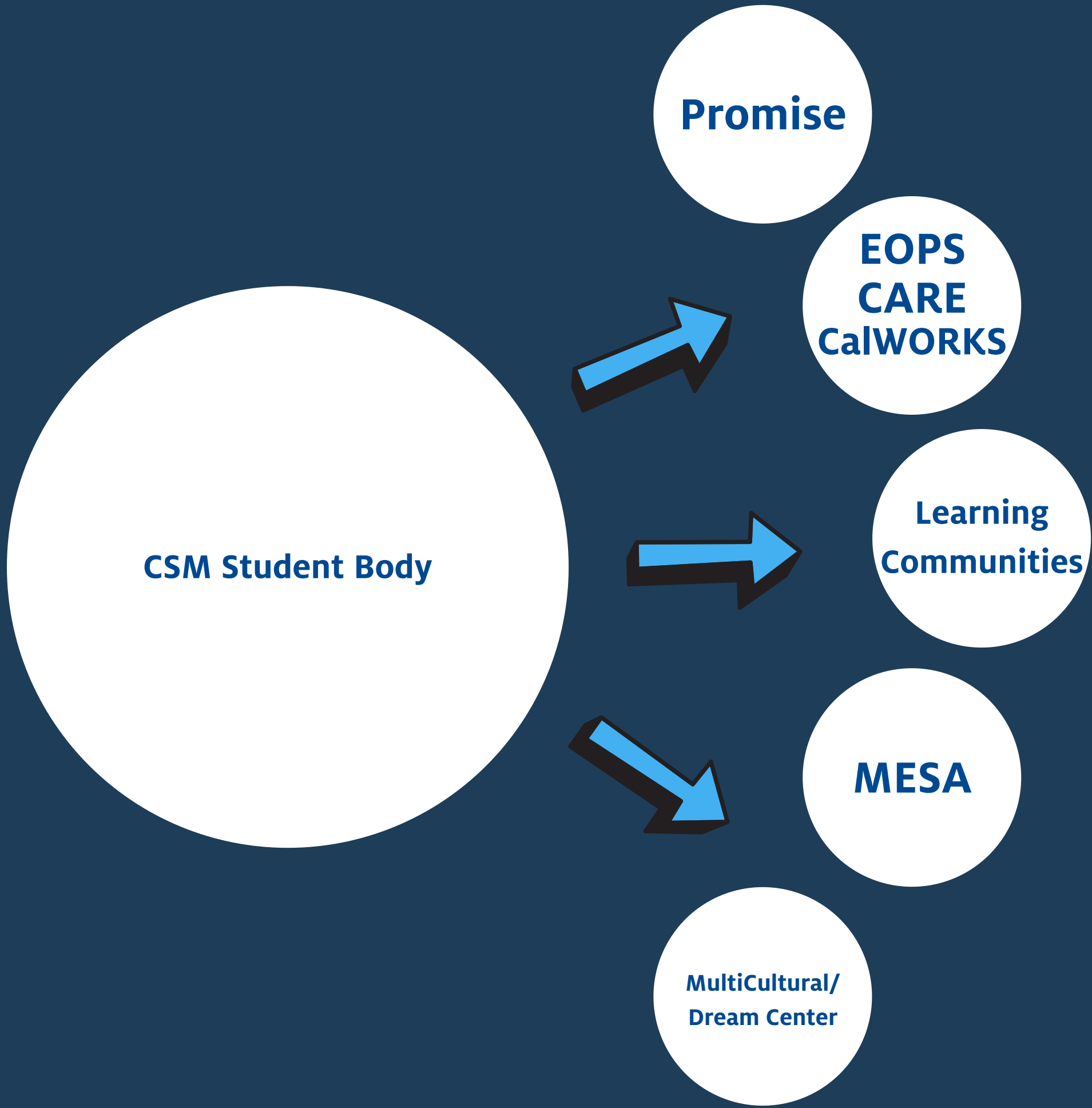
partnering with existing support programs to ensure high-needs students receive needed non-academic support

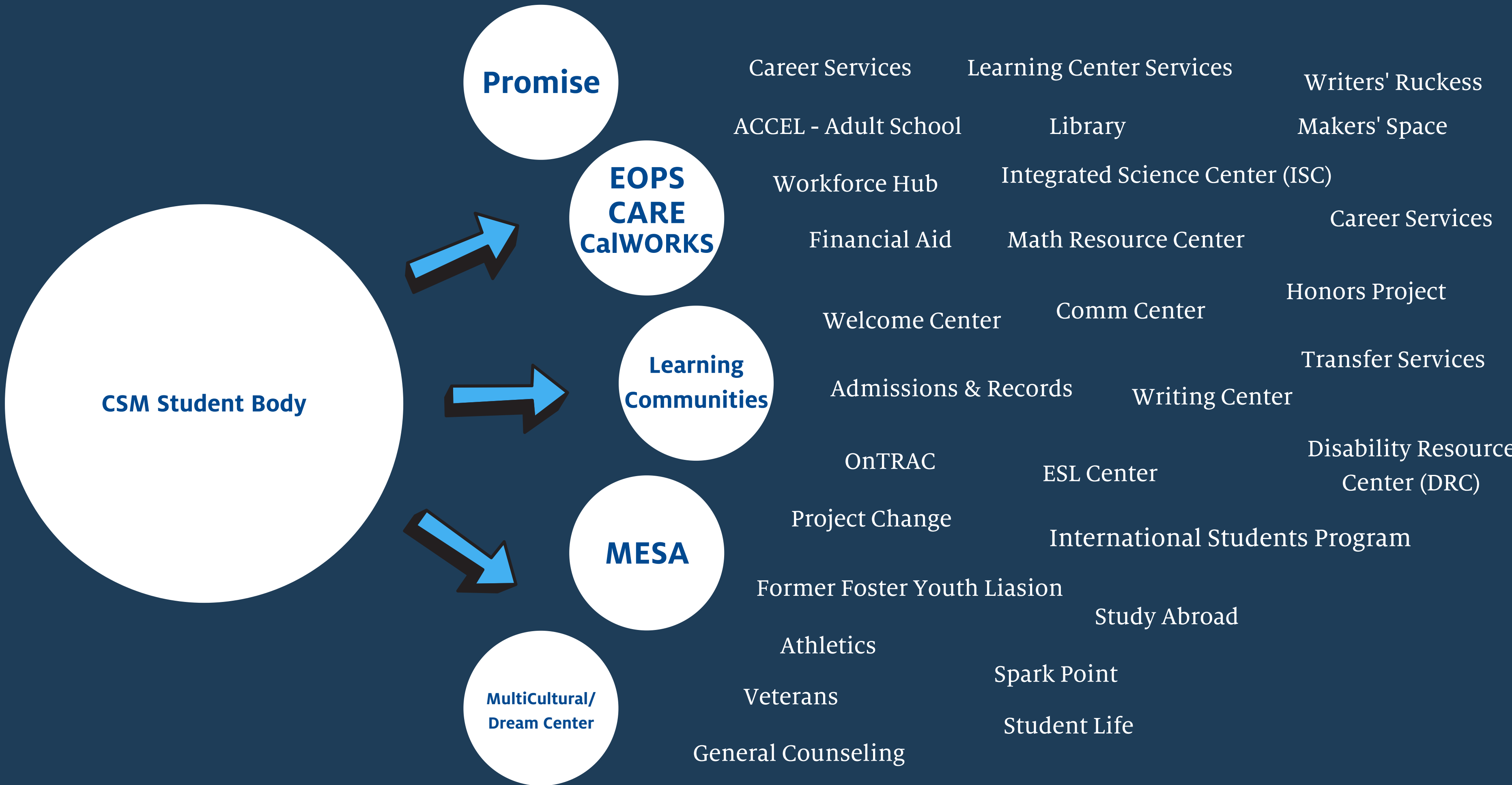


expanding campus-wide education and preparation for potential career and transfer opportunities



CSM Student Body







- Career Services
- Learning Center Services
- Writers' Ruckess
- ACCEL - Adult School
- Library
- Makers' Space
- Workforce Hub
- Integrated Science Center (ISC)
- Financial Aid
- Math Resource Center
- Career Services
- Welcome Center
- Comm Center
- Honors Project
- Admissions & Records
- Writing Center
- Transfer Services
- OnTRAC
- ESL Center
- Disability Resource Center (DRC)
- Project Change
- International Students Program
- Athletics
- Former Foster Youth Liasion
- Study Abroad
- Veterans
- Spark Point
- General Counseling
- Student Life

Who's left?

2021-22

Work-to-date

FALL 2021

- Advisory teams convened on support team planning
- Release time for 5 faculty members (.2FTE/3FLC)
- Worked on data & Marketing for GP
- Program Mapper launched

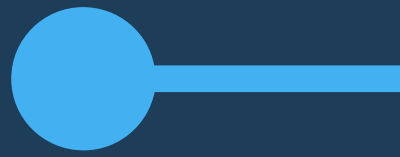
2021-22

Work-to-date

SPRING 2022

- Building infrastructure for support teams with co-leads & Steering Committee
- Recruiting 5 faculty members for Academic & Career Communities in Fall
- Training different groups on Program Mapper
- Plans to integrate ACCs into Fall 2022 Welcome Week
- Review of Interdisciplinary Degrees & next steps
- Building 3 year and part-time maps

WHAT'S NEXT



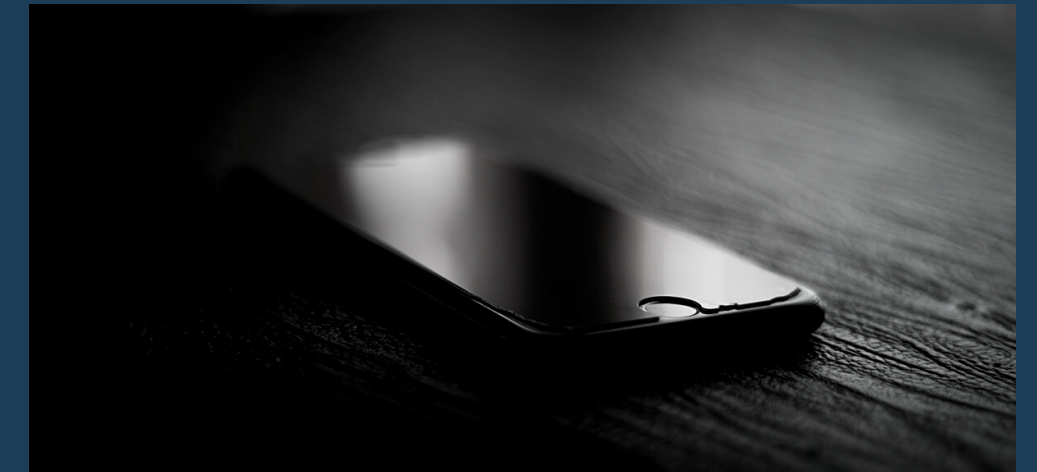
FLEX DAY SESSION

panel of experts from other colleges on their support team implementation



TRAINING

summer training for support team members



FALL LAUNCH

bringing support teams live!



Dear CSM Faculty Members:

Please
join us at our
**CAREER
EXPLORATION FAIR**
WED, MARCH 23, 2022
10:30am – 1:00pm
Bayview Dining Room
College Center (Bldg. 10), 2nd floor

Come and

- **share your expertise**
- **help students explore different career pathways in your field**
- **answer questions about the majors in your department**

To confirm your participation, scan the QR code to the right or simply send an email to csmcareerservices@smccd.edu



Hosted by  CAREER SERVICES

Questions?
Contact Christine at csmcareerservices@smccd.edu