

# Academic & Career Communities



Meet our GP  
Steering  
Committee!



*Allie Fash*  
*Interim Director of GP*



*David Locke*  
*Physics Professor*



*Emily Kurland*  
*ESL Professor*



*Alex Guiriba*  
*Counselor*



*Jane Jackson*  
*Music Professor*



*Carol Ullrich*  
*Program Services Coordinator*



*Yvette Butterworth*  
*Math Professor*



*Rene Anderson*  
*English Professor*



*Mounjed Moussalem*  
*Computer Information  
Science Professor*



*Kelsey Harrison*  
*Program Services Coordinator*



*Trang Luong*  
*Counselor*



*Kristi Ridgway*  
*Dean of Language Arts*

Guided Pathways Vision Statement: College of San Mateo will create an equity-minded, student-centered experience that empowers students to reach their educational goals.

# *The Student Journey*



*Proactive Onboarding  
Wrap-Around Supports*

*Intrusive Counseling  
Enhanced Teaching & Learning*

# Annual Goals

1. integrate Academic & Career Communities
2. foster curricular connections
3. develop sustainability plan
4. provide consistent communications campus-wide



## Purpose

- identified student need for clarity upfront
- provide tool for exploration
- support pathway development
- foster cross-department curricular collaboration

## GUIDED PATHWAYS - FALL 2019 TOOLKIT

### Building Bridges to Knowledge, People, and Careers

**Why Design Principles?** As College of San Mateo begins the process of mapping programs through college-wide collaborations this fall, we need a set of design principles that will guide our discussions and decision making.

**Our Vision:** College of San Mateo will create an equity-minded, student-centered environment that empowers students to reach their educational goals.

### Guiding Principles

#### *Campus-Wide Work*

#### **Cross-Campus Collaboration**

- Work collectively with shared vision
- Communicate with transparency

#### **Inclusion & Empathy**

- Develop and sustain culturally engaging environments
- Provide tools for growth and success

#### **Flexibility & Creativity**

- Build on successful traditions and past practices
- Innovate and try new approaches

### Inventory Project Design Principles

#### **Prioritize Student Experience**

- Encourage career and major exploration
- Provide guidance and clear paths for students
- Establish program specific milestones

#### **Provide Clear Pathways**

- Streamline prerequisites and degree requirements
- Provide balanced course load recommendations as students progress semester by semester
- Identify course sequences based on student need, considering part-time and full-time students, as well as exploration and/or changing majors

#### **Collaborate Across Disciplines**

- Focus on common career, transfer, and completion goals
- Map ideal programs by identifying specific course sequencing and pairings
- Encourage opportunities to talk about shared courses that may meet multiple degree and certificate requirements

# Process

Program Mapper is a tool that helps students explore the degrees and certificates available at CSM

1

Inventory Project

2

Faculty, counselor reviews.  
Identify appropriate platform.

3

develop our own Program Mapper  
(authoring team & faculty meetings)

# Common ???s

1

What about maps for part-time students?



2

What do students say?



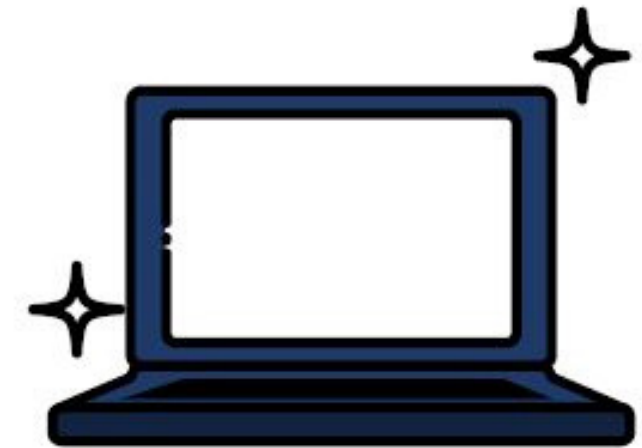
3

How will maps change as curriculum changes?



4

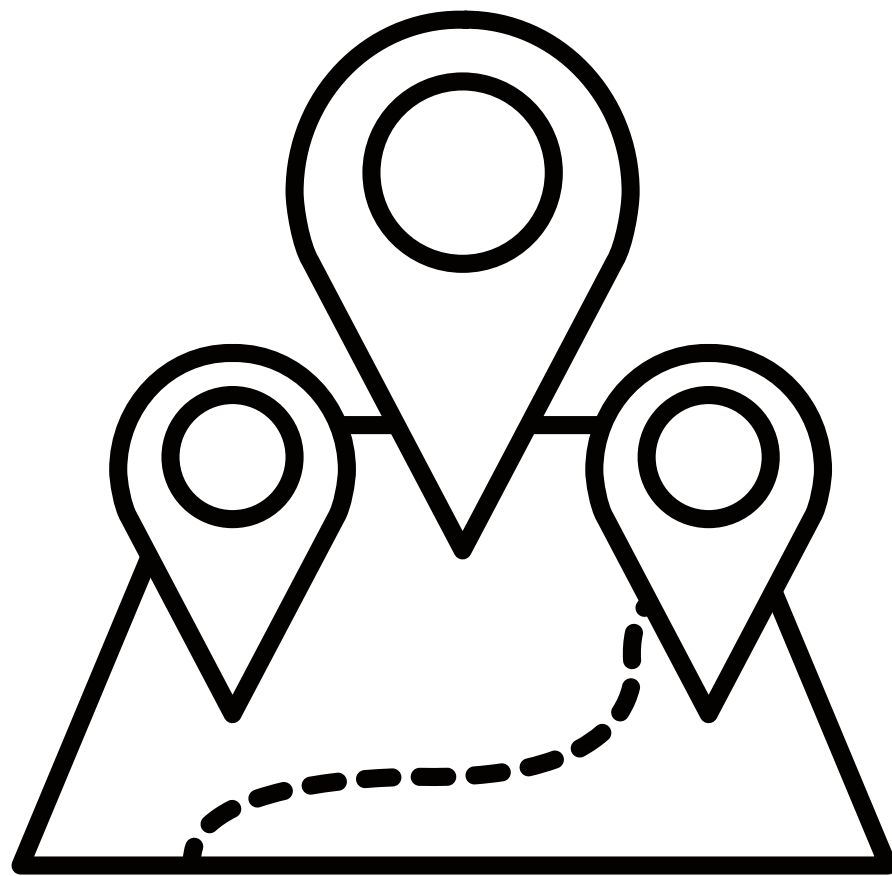
Where will the website live?





DEMO!

# Next Steps



- ACC Support Teams
- Student focus groups
- 3- year maps, part-time maps
- Career Connections
- Instructional faculty collaboration
- Embed program videos