

College of San Mateo Redesign

STUDENT-CENTERED EDUCATION = CENTERING ON SOCIAL JUSTICE + EQUITY

Our student-centered college redesign is guided by our educational master plan for social media justice, equity, and education towards transfer and upwardly mobile careers that postively impact our community.

WHY REDESIGN?

We want to ensure that College of San Mateo is a place where all students are welcomed, feel they belong, receive needed supports, and succeed in their educational goals. Our experience and data show that our college is working for some, but not for all of our students. Through a thoughtful, coordinated redesign, we will identify and expand successful practices, fill in the gaps where support is lacking, and remove barriers to success with a focus on those who are disproportionately impacted. Our goal is to reduce equity gaps while improving the student experience and success for all.

OUR COMMITMENT TO SOCIAL JUSTICE

We commit to being transparent about the racial and other inequities that persist on campus so that we may take action to eradicate these inequities. We commit to working specifically in solidarity with our groups of disproportionately impacted students. We commit to educating ourselves about how to be anti-racist and then to putting this knowledge into action.

WHAT IS OUR EDUCATION MASTER PLAN?

Our [Educational Master Plan \(EMP\)](#) is our college strategy for how we will improve and better connect instruction and student support in order to help more students, especially those disproportionately impacted, gain the skills and knowledge they need to be more gainfully employed, earn a degree, or transfer.

More than 250 student, faculty, staff, and administrative voices were captured to create the EMP's 5 strategic priorities:

1. Supporting our Student's Aspirations
2. Creating Equitable Opportunities for all of our Students
3. Committing to Progressive and Innovative Teaching and Learning
4. Building on a Culture of Participation and Communication
5. Building on a Tradition of Service to the Community

Three initiatives, which collectively intersect with every program on campus, lead the EMP implementation:

EQUITY

The goal of equity is to create (and curate) a culturally affirming campus environment that encourages, empowers, and equips every student to reach their fullest academic and human potential.

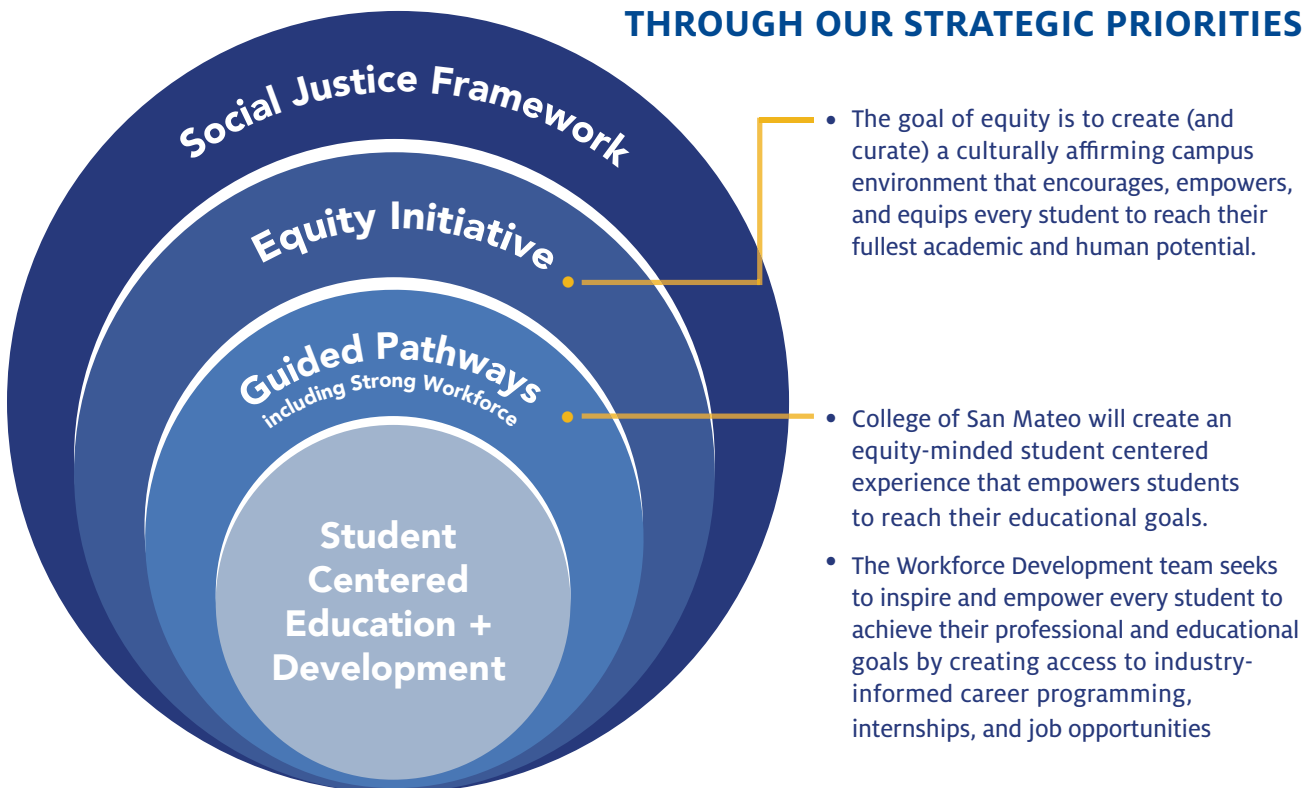
WORKFORCE DEVELOPMENT

The Workforce Development team seeks to inspire and empower every student to achieve their professional and educational goals by creating access to industry-informed career programming, internships and job opportunities.

GUIDED PATHWAYS

College of San Mateo will create an equity-minded, student-centered experience that empowers students to reach their educational goals.

RE-ENVISIONING THE STUDENT EXPERIENCE THROUGH OUR STRATEGIC PRIORITIES



WHO SHOULD BE INVOLVED?

Our EMP implementation requires everyone's participation. We must work together to eradicate inequities for our students. No program or department is immune to structural racism or inequities. While Equity, Workforce Development, and Guided Pathways lead the implementation of our strategic priorities, we need full participation from all programs and initiatives for a thoughtful redesign.

HOW DO WE DO THIS?

Together as a campus, our programs and initiatives will foster a culture of belonging, support, and success for all students. Using a social justice lens, we will transform the structures, processes, and practices at CSM to serve every student, particularly disproportionately impacted students. With our EMP implementation, our leading initiatives, in conjunction with supporting programs and services, will be reimaged to optimize student engagement and goal completion.

WE NEED YOU—PLEASE JOIN IN:

Guided Pathways Team Meetings

Wednesday, September 23, 2:10-4:00 pm

<https://smccd.zoom.us/j/92172765490?pwd=dnh5enpjUWplZWtQbHM1dGJ5Wlg3QTog>

Meeting ID: 921 7276 5490

Password: 504429

Wednesday, October 28, 2:10-4:00 pm

<https://smccd.zoom.us/j/92172765490?pwd=dnh5enpjUWplZWtQbHM1dGJ5Wlg3QTog>

Meeting ID: 921 7276 5490

Password: 504429

Strong Workforce Program Steering Committee Meeting

Tuesday, November 17, 1:00-2:00 pm

<https://smccd.zoom.us/j/92994461432?pwd=eGNMGmFjGSigZM2t5SGl5UE5OSUlQTo9>

Meeting ID: 929 9446 1432

Passcode: 960322

**More dates TBD*

IMPACT Equity Evaluation Implementation Q&A Sessions

We will use these meetings to discuss, collaboratively, and highlight both the impetus and the application of the IMPACT Evaluation Grid. The goal is to hear from groups that are working to implement the Toolkit. We will also use this time to discuss the work that inquiry groups are undertaking. Ultimately, the goal is to work together to identify best practices in identifying and eradicating inequitable policies/practices/procedures/pedagogies.

These sessions will take place every third Thursday of the month starting on September 24.

<https://smccd.zoom.us/j/94466569296?pwd=YmVWcEZpdWxXSDRhWWtYVWFtQkE5Zzo9>

Additional dates:

- October 15, 2020

<https://smccd.zoom.us/j/91716593353?pwd=UVVHYzZGRlVCazhmUjltWFM5c2k1Zzo9>

- November 19, 2020

<https://smccd.zoom.us/j/94188739945?pwd=b2dHM3BKVnYxRldmSo1HWXgxWjRXQTog>

- December 17, 2020

<https://smccd.zoom.us/j/93691845530?pwd=eU1RRoVoMmZKRStudDNLZnJ6ZDkvZzo9>