

# CLUSTERS

---

Guided Pathways – November 2019

# For today...

- Introduction to “the why” and “the what”
- Examples
- Lightning rounds – let’s dive in
- Process, Timeline & Next Steps

# 2019-2020 Guided Pathways Goals

- Create Inventories for each CSM Program
- Organize CSM Programs into Clusters
- Engage faculty & staff in the inquiry and design of proactive and integrated student support models

# WHY CLUSTERS?

THE WHY: Providing students clear entry points to explore different areas of study, while connecting to career information, support and experiences.

THE WHAT: groups of majors and degree pathways designed to help students explore their academic and career options and to connect to specific areas of interest.

Supporting Evidence:

- 2017 Student Focus Group Report
- Unit thresholds
- Best Practices from colleges across state

# City Colleges of Chicago

EXPLORE BY:

FOCUS AREA

student  
guided pathways to success  
**gps**

## Student Guided Pathways to Success

A degree or certificate from City Colleges of Chicago can put you on the path to a rewarding career either right after graduation, or after successfully transferring to a four-year institution. Use our GPS navigation tool below to explore the options open to you at CCC.

## Explore by Focus Area

Our degrees and certificates largely fall within one of our ten focus areas. Click on a focus area to learn more.



ADVANCED  
MANUFACTURING



BUSINESS &  
PROFESSIONAL SERVICES



CONSTRUCTION  
TECHNOLOGY



CULINARY ARTS &  
HOSPITALITY



EDUCATION



HEALTHCARE



INFORMATION  
TECHNOLOGY



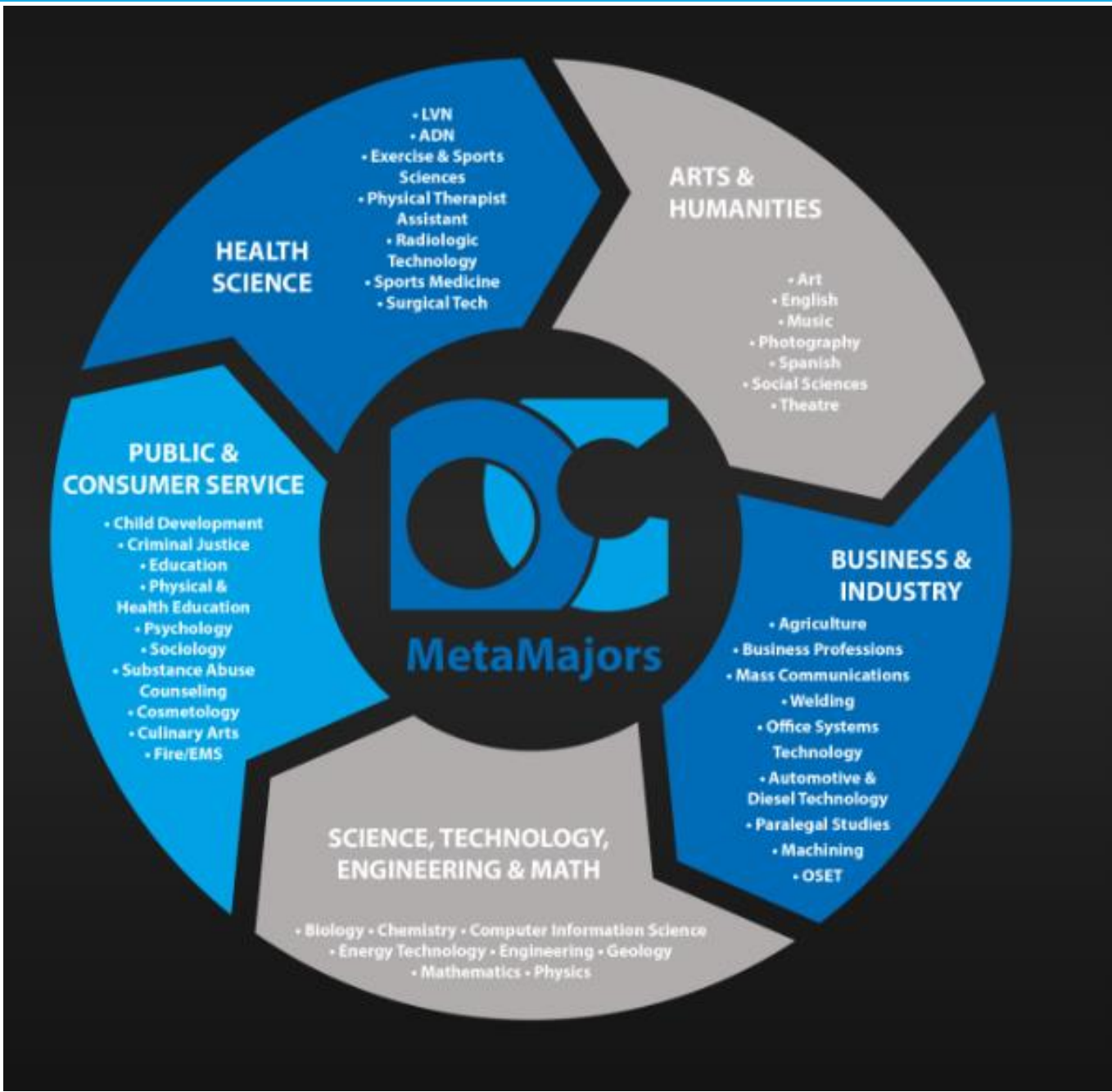
HUMAN SCIENCES

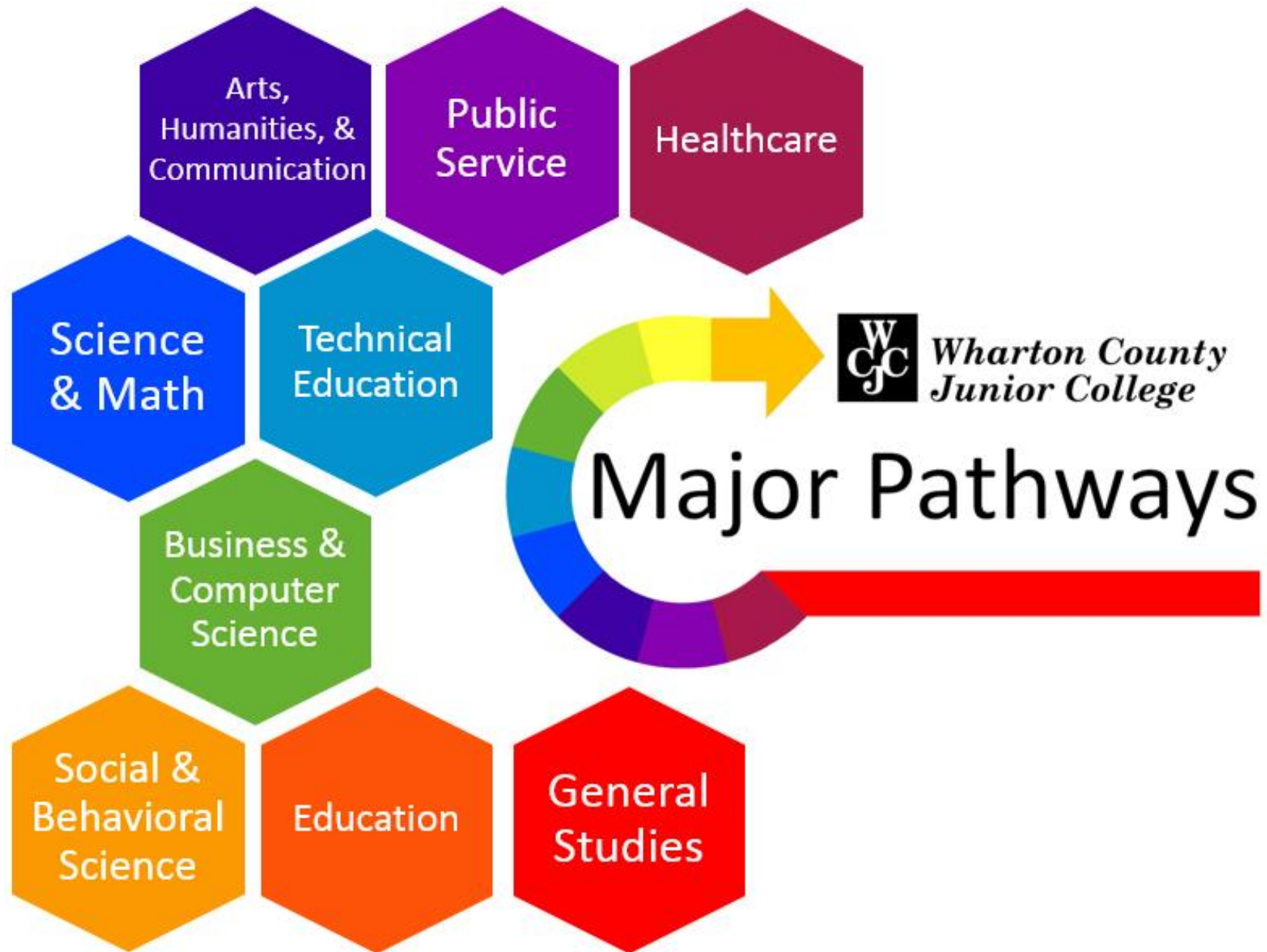


NATURAL SCIENCES



TRANSPORTATION,  
DISTRIBUTION &  
LOGISTICS







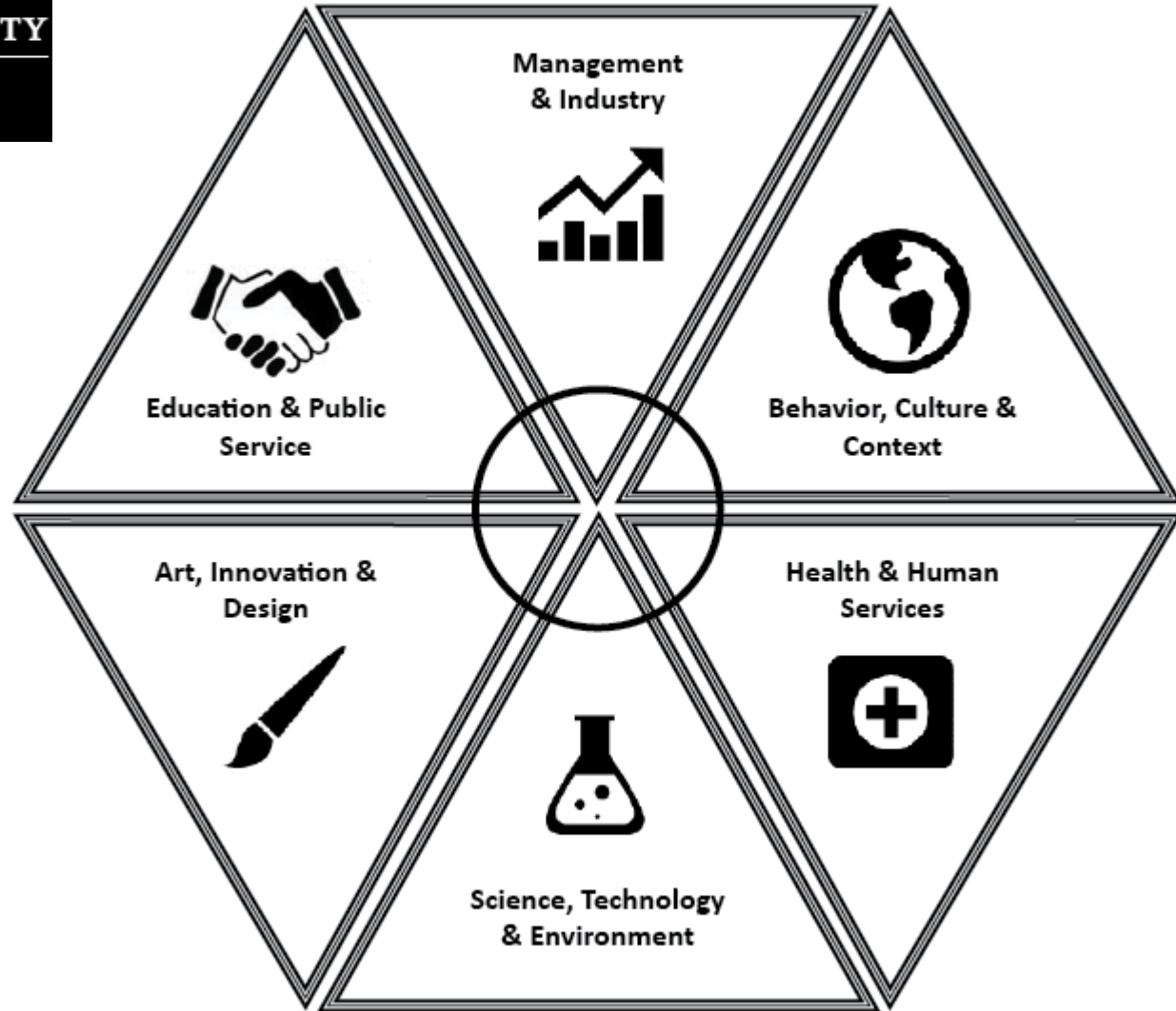


THE OHIO STATE UNIVERSITY

If you are wondering how you will narrow 200 majors into one, narrowing your options down into one or two meta-majors is a good place to start.

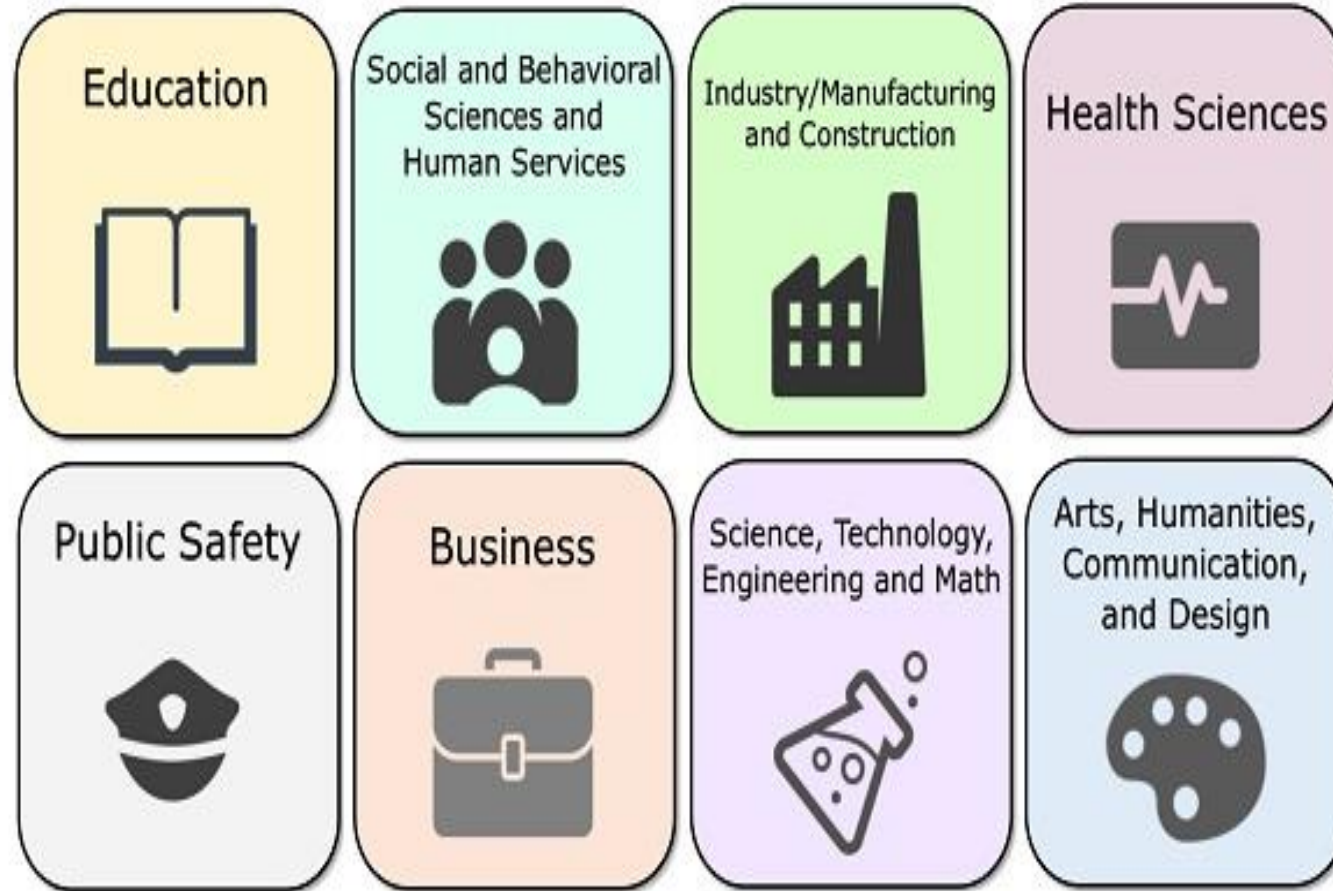
In Exploration, we concentrate on six broad areas where majors share similarities.

It is also important to note that no one college or school contains all the majors at Ohio State that are in a particular field of study.



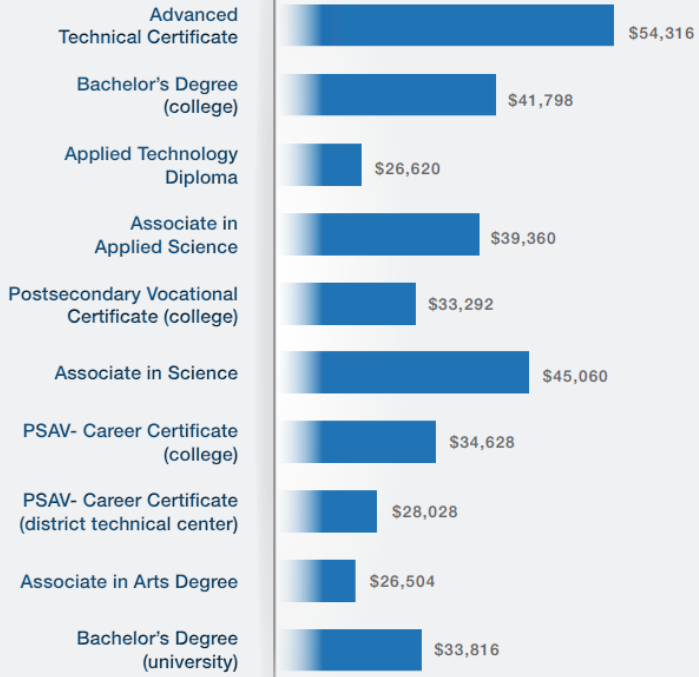


# Meta Majors

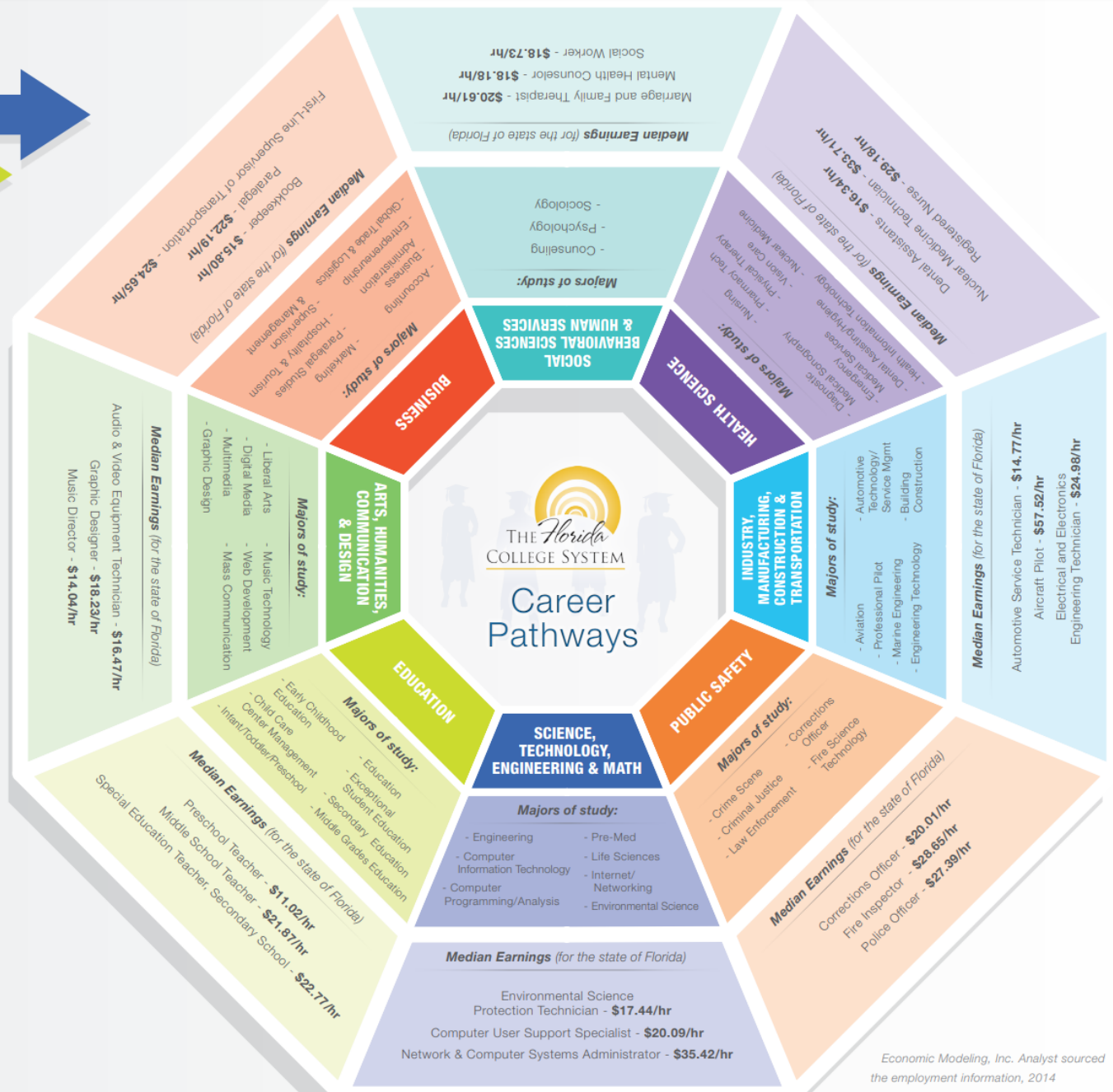


Start your journey today, choose from one of the eight **Career Pathways** to learn what you can study and how much you could earn as a new graduate.

### Median First-Year Earnings All Florida Public Colleges (after graduation)



Source: "Higher Education Pays: Measuring the Economic Security of Florida's Postsecondary Graduates" a study created through a partnership with the State of Florida and College Measures, 2014.



Economic Modeling, Inc. Analyst sourced the employment information, 2014

Begin

# Meta Majors



with the End in Mind

Determine an Area of Interest



Arts & Humanities



Business



Education



Health Science



Manufacturing



Public Safety



Science & Technology

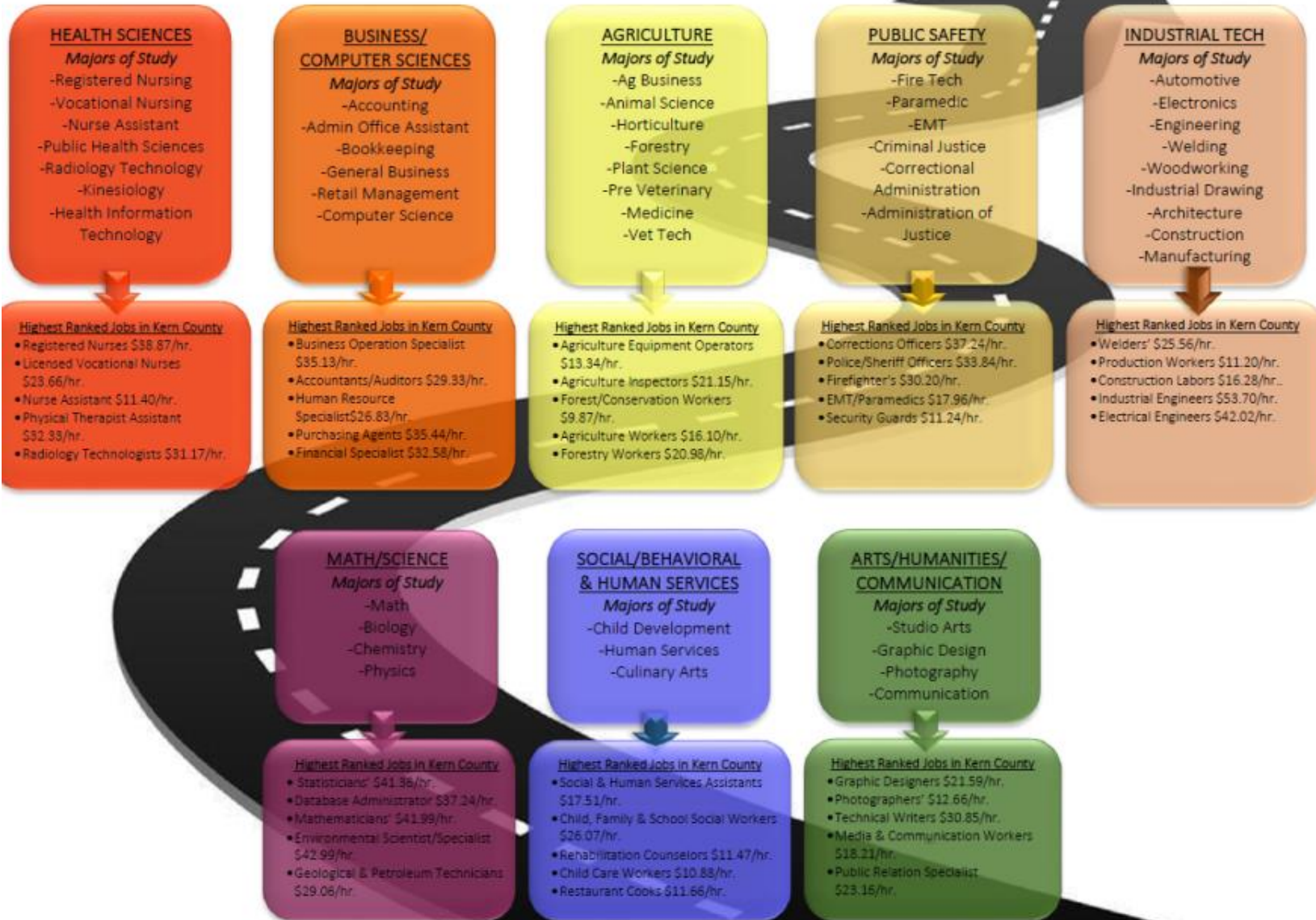


Social Science

The Florida System aligns with K-12 pathways with the college and university 8 pathways as exemplified by this district, St Lucie Public Schools in Port St, Lucie, FL



# RENEGADE ROAD MAP



# Renegade Road Learning & Career Pathways



**Destination**



**Start Here**

## Health Sciences

- Majors of Study*
- Biology – Human Biology
  - Health Information Technology
  - Kinesiology
  - Paramedic
  - Public Health Sciences
  - Radiology Technology
  - Registered Nursing
  - Vocational Nursing

## Business

- Majors of Study*
- Accounting
  - Administrative Assistant
  - Bookkeeping
  - Business Administration
  - Communication
  - Economics
  - Office Assistant
  - Retail Management

## Agriculture, Nutrition & Culinary Arts

- Majors of Study*
- Ag Business
  - Agriculture Plant Sciences
  - Culinary Arts
  - Animal Science
  - Dietetic Services Supervisor Program
  - Environmental Horticulture
  - Food Service Management Option
  - Forestry
  - Plant Science
  - Plant Science – Horticulture Emphasis
  - Plant Science – Crops Emphasis

## Science, Technology & Engineering, Math (STEM)

- Majors of Study*
- Biology – General Biology
  - Chemistry
  - COMP TIA
  - Computer Science
  - Engineering
  - Geology
  - Math
  - Physics

## Public Safety & Emergency Management

- Majors of Study*
- Administration of Justice
  - Chief Fire Officer
  - Correctional Administration
  - Criminal Justice
  - Fire Officer
  - Fire Technology
  - Paramedic
  - Wildland Fire Technology

## Social Sciences, Behavioral Sciences & Human Services

- Majors of Study*
- Administration of Justice
  - Anthropology
  - Communication
  - Criminal Justice
  - Economics
  - English
  - History
  - Human Services
  - Philosophy
  - Political Science
  - Psychology
  - Sociology

## Industrial & Transportation Technology

- Majors of Study*
- Architectural Drafting
  - Bachelor of Science, Industrial Automation
  - Brakes
  - Cabinet making
  - Construction
  - Engine Overhaul
  - Engineering Technology
  - Industrial Drawing
  - Industrial Technology – Automotive
  - Industrial Technology – Electronics
  - Industrial Technology – Industrial Drawing
  - Industrial Technology – Manufacturing
  - Industrial Technology – Welding
  - Industrial Technology – Woodworking and Cabinetmaking
  - Industrial Technology – General
  - Powertrain
  - Tune Up Emissions

## Education (Early Childhood / k-8)

- Majors of Study*
- Child Development Master Teacher- Infant Toddler
  - Child Development Master Teacher-Special Education
  - Child development Teacher
  - Early Childhood Education
  - Elementary Teacher Education

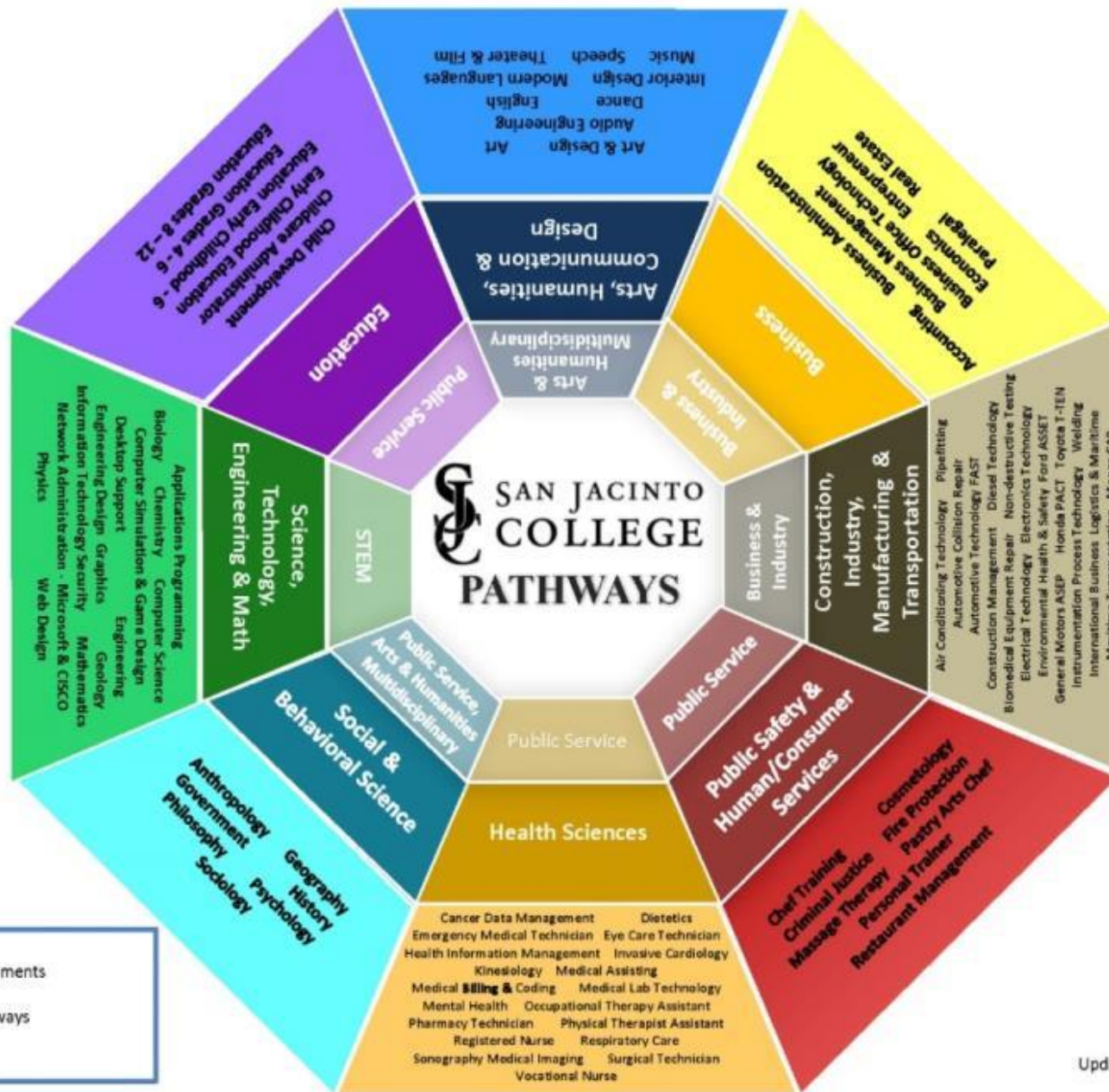
## Arts, Humanities & Design

- Majors of Study*
- American Sign Language
  - Commercial Music
  - Communication
  - English
  - Graphic Design
  - History
  - Journalism
  - Media Art
  - Music
  - Philosophy
  - Photography
  - Spanish
  - Studio Art
  - Theater Arts

## Personal & Career Exploration

*Majors of Study*

For the undeclared student and those exploring a variety of potential careers



Inner Ring:  
High School Endorsements

Middle Ring:  
San Jac Career Pathways

Outer Ring:  
San Jac MAPs

# Cluster Activity

Together in groups of 3-5.

## Two activities:

- Likes and dislikes of examples (10 minutes)
- Responding to CSM clusters (20 minutes)



# Process & Timeline

## This Fall:

- Students First: Initial cluster activities launch (partnering w/ The Village, Clubs, Promise)
- First drafts of Inventories due by Nov 15<sup>th</sup>
- Guided Pathways Steering Committee will assess needs for refinement and completion in Spring 2020 and arrange support

# Process & Timeline

## This Spring:

- Inventory Support Provided – Final drafts due April 8<sup>th</sup>
- Students Groups con't: Cluster activity with additional groups, including but not limited to evening students, student services groups, high school seniors
- Cluster activities: Divison/Dept Meetings
- Guided Pathways collects major themes and provides feedback to IPC, Academic Senate, Classified Senate for review
- First Draft Clusters completed May 2020

# For further consideration...

- Alignment with CRM
- Student Success Teams & Clusters
- Names of the individual clusters
- Marketing options for students
- Having multiple majors across clusters