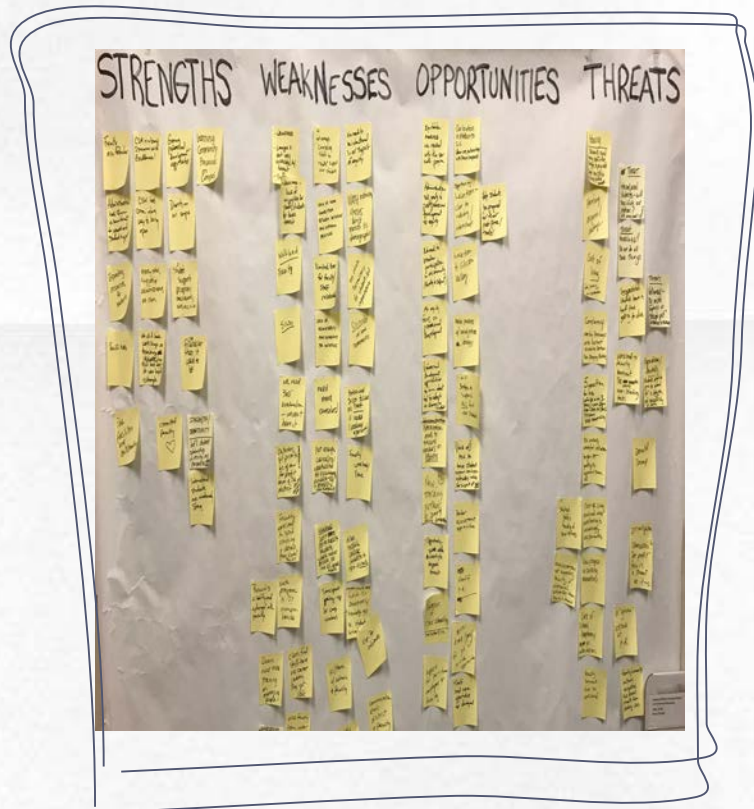




Education Master Planning  
&  
Focus Group Qualitative Data

---

# Look Familiar?



## Agenda

Planning at CSM  
EMP qualitative  
data

- Reflections
- Top 5 Priorities
- Workgroup
- Next steps

1.

# Planning at CSM

Aligned with the District

# EMP: The Intersection of Strategies & Goals





# EMP Context

---



Draft outline review

2.

# EMP Qualitative Data

What you all said...

# CSM Speaks!

Over 250 CSM Voices

12 EMP Focus Groups with Faculty (FT & PT), Staff,  
Administration

**Student Service Council 2/6**  
**Instructional Admin Council 2/6**  
**Social Science Creative Arts 2/7 & 4/4**  
**Language Arts 3/12**  
**Academic Support and Learning Technologies 3/12**  
**Math & Science 3/9**  
**Business Technology 4/5**  
**Academic Senate 2/27**  
**Student Senate 2/26**  
**Classified Staff (flex Day) 3/8**  
**Classified Senate 2/27**  
**Counseling 5/3**

# Qualitative Focus Group Data Analysis

## ▣ The Process:

▣ Commonly called an affinity diagram, language processing diagram, or K-J (Kawakita Jiro) method

▣ Used to **analyze** large amounts of data to discover relationships that allow a direction to be established based on the associations. Sticker notes map issues and insights into a hierarchical **diagram**.

▣ Used by social scientists and businesses since the 1970s





# About the EMP Qualitative Data

---



## Strengths

- Voices from all areas of CSM represented
- Multiple opportunities for input
- Free flow conversation
- Reflection
- CSM voices drive the planning process

Today: Remove facilitator bias through working group definition of priorities for EMP focus areas

## Limitations

- Frequency counts not possible: When participants chose not to write, quotes were transcribed by facilitator
- Reliance on facilitator for ranking of importance

# How to Read the Diagrams



## Black Labels

Direct quotes organized by common ideas.



## Blue Labels

Summarizes an intersection of ideas contained in quotes.

First level groupings



## Red Labels

High level grouping of blue labels.

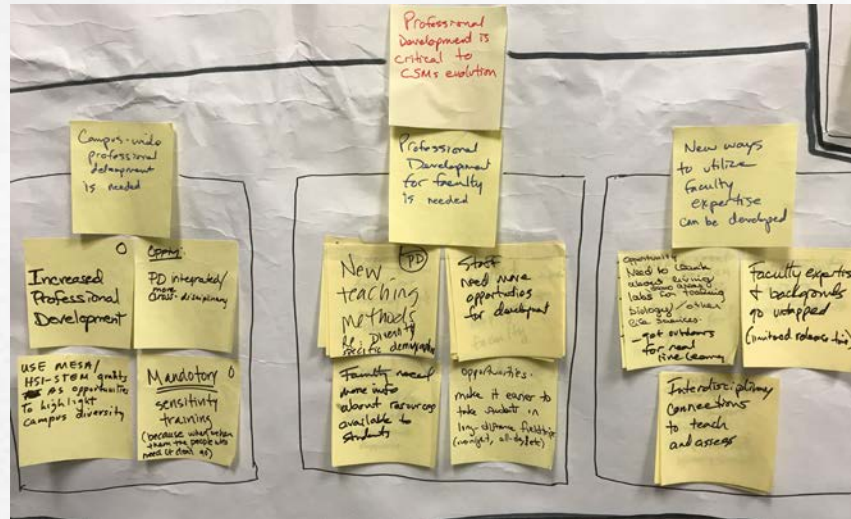
Second level groupings



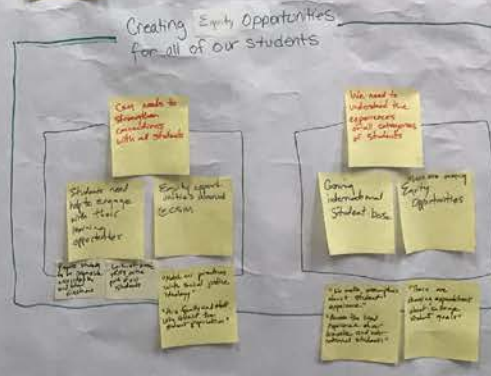
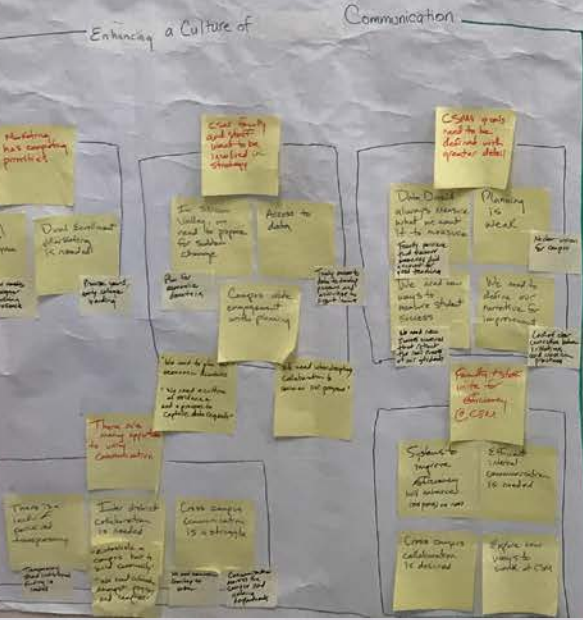
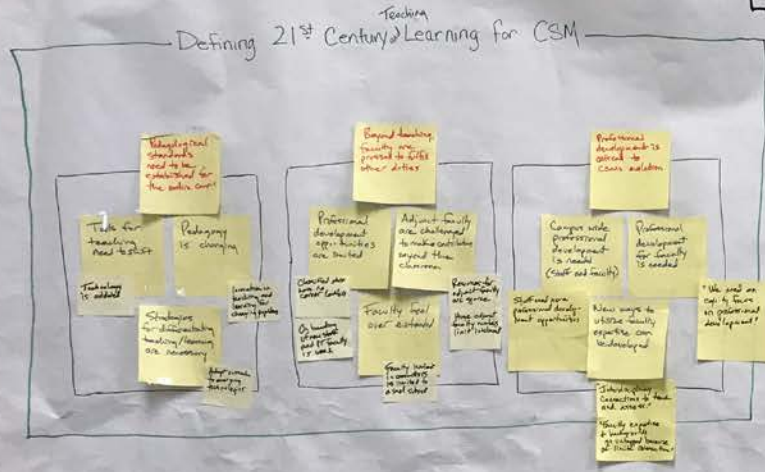
## Green Labels

Top Level summary of labels from all four SWOT Diagrams

Green is used only on the diagram showing the top level summary



# EMP FOCUS GROUP TOP LEVEL DATA GROUPINGS



# Reflections on the EMP Qualitative Data

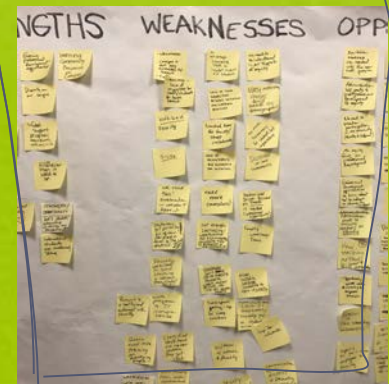
▣ Validate the voices and analysis you see on the walls (as a large group)

○ Gallery walk to answer:

- Does the qualitative data (black label) reflect the discussion in your focus group?
- Does the analysis reflect the black label data?



40 Minutes total with gallery walk



# Small Group Discussion: The Top 5: Green Labels

	Year 1	Year 2	Year 3	Year 4	Year 5
CSM Area of Focus #1					
Priority #1					
Priority #2					
Priority #3					

- ▣ Break into 5 groups by green data labels.
  1. Defining Teaching and Learning for the 21<sup>st</sup> Century
  2. Supporting our Students Dreams
  3. Creating Equity Opportunities for all CSM Students
  4. Enhancing a Culture of Communication
  5. CSMs Value Proposition to the Community

- ▣ Evaluate the green level titles
  - Refine green labels based on the data OR create up to 3 alternative labels

▣ Report out

▣ EMP Workgroup



30 Minutes group work  
5 minutes report out per group

3.

Moving Forward

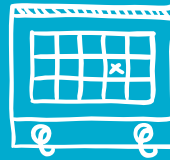
# Next Steps

---



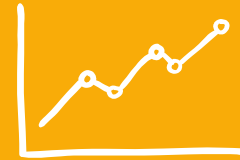
## Communicate

- \*IPC Minutes to all CSM (May)
- \*Town Hall Meetings (Fall)



## Design and plan (Fall)

- \*Priorities
- \*Structure
- \*Process
- \*Oversight



## Implement

- \*Work towards priorities
- \*Measure progress

4.



Thank you for your input and work today!