

# Schedule of Classes

Summer 2012 ~ Session begins June 18 ~ [collegeofsanmateo.edu](http://collegeofsanmateo.edu)

*Celebrating  
90 Years of  
Educational  
Excellence*

# 1922

*The Tradition Continues*

**facebook.**

[collegeofsanmateo.edu/facebook](http://collegeofsanmateo.edu/facebook)

**LinkedIn**

[collegeofsanmateo.edu/linkedin](http://collegeofsanmateo.edu/linkedin)

**twitter**

[collegeofsanmateo.edu/twitter](http://collegeofsanmateo.edu/twitter)

## CSM Student Spends “Life-Changing” Summer in Harvard Forest



*Photo credit: Harvard Forest, Harvard University*

When Harvard Forest called CSM student Collette Yee and offered her admission in its summer research program, Yee enthusiastically accepted. Little did Yee realize that she had competed among 500 college students nationwide for a program that accepted only 31 students. Even more impressive was the fact that Yee was the only community college student in the program!

Yee, a 2009 graduate of Terra Nova High School, became interested in environmental sciences, a field that integrates physical and biological sciences to the study of the environment. Due to the broad nature of the field, she decided to attend a community college so that she could explore the different sciences. After attending

*See “Harvard Forest” on page 2*

# College of San Mateo

# College of San Mateo

**Schedule of Classes ~ Summer 2012 ~ Session begins June 18**

## Inside this Issue

CSM Student Collette Ye. . . . .	Outer Back Cover
President's Message . . . . .	2
About CSM . . . . .	3
Summer 2012 Important Dates. . . . .	3
Registration and Enrollment. . . . .	4
Steps to Successful Enrollment. . . . .	5
Financial Aid. . . . .	5
Educational Goals at CSM . . . . .	6
AA/AS Degrees and Certificates . . . . .	6
Transfer Worksheets . . . . .	7
Schedule of Classes . . . . .	8-13
Policies, Programs and Fees (includes a new course repetition policy). . . . .	14
Map, Directory and Parking . . . . .	15

## Student Success Story: Corey Kreidler

**Cal Poly San Luis Obispo, B.S. degree, Environmental Engineering**

When **Corey Kreidler** first arrived at CSM, what he looked forward to most was to take classes in subjects that were not offered at his high school. A graduate of Half Moon Bay High School, Corey had earned a high grade point average, but as with so many college freshmen, he was uncertain about a major. "I wanted to take the right path so I decided to attend CSM. I had time to learn about different subjects without the pressure of focusing on a major right away."

Among the classes Corey took were psychology, business and engineering. It was a conversation he had with his engineering professor, **Laura Demsetz**, that put him on track to become an engineering major. She also reinforced the importance of learning about other subjects that would enhance his engineering education. In preparation for his major, Corey was required to take science and math each semester, but he was also able to take a variety of humanities and social science courses which he believes made him a well-rounded student.

"CSM was like a launching pad for me. Since I wasn't ready out of high school to move from home and attend a university, CSM gave me the flexibility to figure out what I wanted to do and where I wanted to transfer."

*See "Student Success" on page 2*



## Connect to College

A Night of Information for High School Seniors and Parents  
**Thursday, April 26 • 6-8:30 pm**



**Free and open to the public**

This event will be held in the College Center, located in the heart of the CSM campus.

To RSVP or for more information, call (650) 574-6646 or email [guiribaj@smccd.edu](mailto:guiribaj@smccd.edu).

## New Veterans Center Opens



*Pictured Above (from left to right): Mike Claire, CSM President; Henry Villareal, Dean of Enrollment Services; Jeremy Mileo, Veteran Certifying Official; Mario Mihelcic, former CSM Veteran Certifying Official; Shamariah Joiner, CSM Student Veteran; Dave Mandelkern, SMCCCD Board of Trustees President*

CSM student veterans now have a place to call their own. Earlier this year, the college officially opened its new Veterans Resource and Opportunity Center (VROC) with a ribbon-cutting ceremony and open house. The program included remarks by college and district officials, a student veteran and a representative of Congresswoman Jackie Speier's Office; it also featured

a color guard unit and musical selections by a group of CSM voice students. The VROC provides a Zen room, lounge, office space and several study areas with computers. The celebration was by all accounts a big success. It was very well-attended by members of the college community and many representatives from veterans groups throughout San Mateo County.

## Plan Ahead - Pay Ahead

*You'll need to pay your class fees by May 16 to stay in school*

For additional information, see page 3 or visit [collegeofsanmateo.edu/fees/planahead.asp](http://collegeofsanmateo.edu/fees/planahead.asp).

## Support CSM

Your opportunity to participate

[collegeofsanmateo.edu/supportcsm](http://collegeofsanmateo.edu/supportcsm)



# Message from the President



Welcome to College of San Mateo! Our 2012 summer session offers a great opportunity for you to stay on track with your educational goals. You can take courses to accelerate degree or certificate completion, acquire skills that apply directly to the workplace, or pursue four-year transfer goals. If you are a new student and you plan to attend CSM this fall, you may want to consider taking a summer session course to get a head start on your education and to become acquainted with our college.

For those of you who are home from a university for the summer, you can use CSM as an opportunity to get ahead on lower-division graduation requirements. The vast majority of our courses are equivalent to freshman and sophomore courses at most universities. In fact, if you attend a CSU or a UC campus there is a useful tool that will allow you to

verify the equivalency of a CSM course with a specific course at your college. You can find this tool at the following website: [www.assist.org](http://www.assist.org). These equivalencies are maintained through formal agreements between CSM and your college and they are guaranteed. If you attend an out-of-state or private institution, check with your college first to verify that it will accept the CSM course you intend to take.

I am sure that you have read about the impact of the state budget on higher education. At CSM we have been able to avoid large cuts to the classroom due to the generosity of the voters of San Mateo County, who passed a parcel tax in 2010. As a result, we are offering a full range of courses this summer.

I hope that you are able to come to CSM to take advantage of all that we have to offer.

Michael Claire  
CSM President

## Student Success (continued from inner front cover)

According to Corey, one of the major benefits of attending CSM was the quality of the faculty and staff. "I had classes taught by many excellent faculty members, and outside the classroom, the faculty and staff were very approachable and always willing to help me."

In addition to the academic foundation he received during his two years at CSM, Corey picked up some additional skills beyond classroom learning. By participating in the college's service learning program, CSM Connects, he found a way to create balance within his rigorous academic schedule. He gained experience in working as a member of a team and communicating effectively with a diverse group of people. Through his service learning projects, Corey was presented with activities that fostered more right-brain, "big picture" thinking. These were skills that he would find helpful as an engineering major and in his career.

Following two years at CSM, Corey transferred to Cal Poly San Luis Obispo as an engineering major. While at Cal Poly, Corey began to focus on environmental issues and chose to study environmental engineering. As a result, he participated in a student organization that promoted sustainability; this led to his coordinating the first annual Cal Poly Green Career Fair, now a major event at the University, where he was able to apply the skills he honed at CSM.

In 2010, Corey earned a bachelor of science degree in environmental engineering from Cal Poly and is now a registered engineer-in-training with the State of California. Since graduating, he has concentrated on nontraditional engineering opportunities that allow him to combine his formal education in engineering and liberal studies with his experience from college activities to propel him in his career. He has served as an intern for a biofuels engineering company and, more currently, has partnered with several startups, most of which focus on energy efficiency and sustainability.

## Harvard Forest (continued from outer front cover)

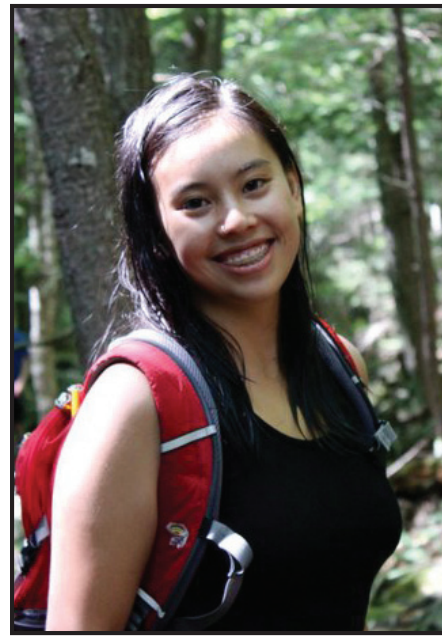


Photo credit: Harvard Forest, Harvard University

another local community college, Yee visited CSM and found that she liked the "look and feel" of CSM and its science department. "CSM seemed to offer a lot of resources for science students, and I wanted to take full advantage of that." After transferring to CSM in spring 2010, she honed in on the field of botany. "Botany was my first college-level science class, and it really sparked an interest with me. It's what made me look into majors such as environmental science and ecology."

As a CSM student, Yee met with Modesta Garcia who helped Yee to develop an educational plan in the natural sciences. During that meeting, Garcia, a Harvard graduate, suggested that Yee apply to the Harvard Forest program, a department of Harvard University. The Harvard Forest

Summer Research Program in Ecology provides opportunities for college students to participate in 11 weeks of mentored and fully-funded summer research at a site located on 5,000 acres of land in Petersham, Massachusetts. Not knowing the competition that she was up against, Yee followed through with the application process. When she received the call from Harvard Forest that she was being considered for the program, she was thrilled. Following two phone interviews, Yee received wonderful news that she had captured one of the coveted 31 Harvard Forest program slots.

As Yee prepared for the program, her initial task was to select a research project. "I focused my study on understanding the growth patterns of red maples. I found red maples to be particularly interesting to study for its characteristics of being able to grow on a wide variety of conditions set it apart from other species." Yee explained. Upon arrival at Harvard Forest, Yee was paired with a faculty mentor with whom she collaborated on her research over the course of the summer. In addition to their research work, Yee and her fellow student research assistants were able to participate in a variety of extra-curricular activities in and around the greater Boston area.

The program concluded with a two-day symposium in which each student presented his or her research and experiences of the summer. In what was Yee's first public scientific presentation, she shared her findings with an imposing audience that included professors, scientists and researchers. "I loved working outdoors in the forest. It was an intense learning experience; I made great friends and had a great mentor," says Yee.

As a result of the Harvard Forest experience, Yee finds that she has an expanded number of opportunities for studying the natural sciences. "I have decided to step out of the botany box and study something else like biology and chemistry. I want to go into research, maybe in the area of ecology." She added, "The summer changed my life. And, I was so very fortunate to meet Modesta Garcia at CSM."

Yee returned to CSM for the 2011-12 academic year to complete her lower division coursework and is also conducting research at the Marine Science Institute in Redwood City. She has applied to UC Berkeley as a conservation and resource studies major and hopes to transfer in fall 2012.

*The Harvard Forest Summer Research Program is funded by the National Science Foundation, U.S. Department of Energy, U.S. EPA, NASA, Harvard University and Mt. Holyoke College.*



## Become a CSM Transfer Student

CSM has resources to help you transfer to the university of your choice.

- Community college students receive the highest transfer priority when applying as juniors. As a CSM transfer student this opportunity is YOURS!
- Transfer Admissions Guarantees are offered solely to community college students. Visit: [uctag.universityofcalifornia.edu](http://uctag.universityofcalifornia.edu) to learn more.
- Not sure if you're eligible for transfer? Have questions? Visit [www.assist.org](http://www.assist.org) (your online assistant for transfer).

**Get Started Today!**

Take the first step to transferring to a four year university by enrolling at College of San Mateo now:

**[collegeofsanmateo.edu/enroll](http://collegeofsanmateo.edu/enroll)**

For additional information about transfer visit our Transfer Services site at:

**[collegeofsanmateo.edu/transfer](http://collegeofsanmateo.edu/transfer)**

## About College of San Mateo



College of San Mateo is located at the northern corridor of Silicon Valley and situated on a beautiful 153-acre site in the San Mateo hills that provides a panoramic view of San Francisco Bay. Since 1922, CSM has been a gateway to higher education leading to university transfer, career preparation and advancement, and professional and personal development.

The College currently serves approximately 10,000 day, evening and weekend students. CSM students reflect the diversity of the Bay Area and have a range of educational goals. To best serve our students, the curriculum offers a wealth of programs that include traditional, semester-length and short courses in addition to distance learning and online options.

Students can experience a vibrant campus life to complement classroom learning that includes leadership development, student government, more than 20 student clubs and educational and cultural activities. CSM is proud of its championship intercollegiate athletic teams which compete at the highest community college level. Many student-athletes receive scholarships and continue at four-year institutions and numerous CSM athletes have gone on to professional careers.

To ensure student success, CSM offers a comprehensive selection of academic support services. Resources include financial aid and scholarships, counseling, transfer services, tutoring, employment assistance, health services and child care, among many others.

For more information about the college, visit [collegeofsanmateo.edu/contactcsm](http://collegeofsanmateo.edu/contactcsm). Take a virtual or campus tour by visiting [collegeofsanmateo.edu/exploreasm](http://collegeofsanmateo.edu/exploreasm).

*College of San Mateo is accredited by the Accrediting Commission for Community and Junior Colleges of the Western Association of Schools and Colleges, (10 Commercial Boulevard, Suite 204, Novato, CA 94949, 415-506-0234), an institutional accrediting body recognized by the Council for Higher Education Accreditation and the U.S. Department of Education.*

## Plan Ahead - Pay Ahead

Registration for the Summer and Fall terms begins on Monday, April 30<sup>th</sup>. You will not be able to register for classes if you have any outstanding balances on your account.

### NEW CHANGE IN FEE PAYMENT PROCESS FOR SUMMER AND FALL 2012

**On Wednesday, May 16, 2012**, students who have any outstanding fee balances will be dropped from summer classes at midnight for non-payment of fees. Students will be dropped on a “rolling” basis every Wednesday at midnight for non-payment fees.

**Two weeks prior to the start of the summer and fall semesters**, students will be dropped at midnight the day following their registration for non-payment of fees.

If you need assistance in paying your fees, you are encouraged to enroll in an inexpensive payment plan via WebSMART, apply for financial aid ([www.fafsa.gov](http://www.fafsa.gov)) at least five days prior to registering for your classes, or complete the Board of Governors Fee Waiver via WebSMART to prevent being dropped from classes. If you still need financial assistance after exhausting all options listed above, please contact the Vice President of Student Services at [csmvpss@smccd.edu](mailto:csmvpss@smccd.edu).

## Summer 2012 Registration Dates & Times

**Continuing Students: April 30–May 8**  
**New & Former Students: May 9–June 17**

### How to add classes after the semester has started

To add a class, attend the first class meeting to obtain the instructor’s approval.

If space is available, the instructor will give you a four-digit authorization code to enter when you register. You must complete the registration process through WebSMART no later than Saturday, June 23.

If a class has reached its maximum enrollment limit, you may be able to choose to add your name to the waitlist. If space becomes available for you to add a class, you will be notified through your [my.smccd.edu](mailto:my.smccd.edu) email account. You will have 24 hours to respond. For more important details visit [collegeofsanmateo.edu/registration/waitlists.asp](http://collegeofsanmateo.edu/registration/waitlists.asp).

For important information regarding deadlines for eligibility for credit or refund of fees please visit: [collegeofsanmateo.edu/fees/credit.asp](http://collegeofsanmateo.edu/fees/credit.asp).

**Online classes** – You can find online instructor contact information by selecting the course title link within WebSchedule ([collegeofsanmateo.edu/webschedule](http://collegeofsanmateo.edu/webschedule)).

## Summer 2012 Important Dates

Pre-registration	Matriculation activities: Placement Testing, College Orientation, Counseling—see page 5
Monday, April 30 – Tuesday, May 8	WebSMART priority registration for Summer and Fall 2012 by appointment—continuing day and evening students
April 30, 2012	EOPS, DSPS, CalWorks, Veterans, Foster Youth, current SEP* required
May 1, 2012	Athletes, Honors Program Students, Associated Student Government, International Students; current SEP* required
May 2, 2012	Continuing Students with current SEPs* by unit value earned, includes Continuing Middle College and Concurrent High School Students with current SEPs.*)
May 7, 2012	All Continuing Students, includes Concurrent High School Students
May 8, 2012	New Matriculants; includes new Middle College Students who have completed matriculation and Priority Enrollment Program participants
Wednesday, May 9 – Sunday, June 17	WebSMART registration for Summer and Fall 2012 by appointment—new, former, and continuing students
<b>Wednesday, May 16</b> <b>IMPORTANT!</b>	<b>Deadline to pay student fees.</b> <i>If fees are not paid by this date, your classes will be automatically dropped. Students will be dropped on a “rolling” basis every Wednesday at midnight for non-payment of summer and fall fees. Two weeks prior to the start of the summer and fall semesters, students will be dropped at midnight the day following their registration for non-payment of fees. Visit <a href="http://collegeofsanmateo.edu/fees">collegeofsanmateo.edu/fees</a> for more information.</i>
Friday, June 1	Spring 2012 final grades available on WebSMART ( <a href="http://collegeofsanmateo.edu/websmart">collegeofsanmateo.edu/websmart</a> )
Monday, June 18	Summer Session begins for both day and evening classes
Monday, June 18 – Saturday, June 23	WebSMART late registration period ( <a href="http://collegeofsanmateo.edu/registration/dates.asp">collegeofsanmateo.edu/registration/dates.asp</a> )
Wednesday, June 20	Last day to drop <b>six-week, seven-week, and eight-week MW evening</b> classes with eligibility for partial enrollment fee/nonresident fee refund or credit. For <b>short courses</b> , eligibility for credit or refund is within the first 10% of class meetings. For exact deadline date, check course in WebSMART: <a href="http://collegeofsanmateo.edu/websmart">collegeofsanmateo.edu/websmart</a> .
Thursday, June 21	Last day to drop <b>eight-week day and eight-week TTh evening</b> classes with eligibility for partial enrollment fee/nonresident fee refund or credit. For <b>short courses</b> , eligibility for credit or refund is within the first 10% of class meetings. For exact deadline date, check course in WebSMART: <a href="http://collegeofsanmateo.edu/websmart">collegeofsanmateo.edu/websmart</a> .
Wednesday, June 27	Six-week classes officially dropped on or before this date will not appear on the student’s record. Short courses and distance education courses officially dropped within the first 30% of the class meetings will not appear on the student’s record. For exact deadline date, check course in WebSMART: <a href="http://collegeofsanmateo.edu/websmart">collegeofsanmateo.edu/websmart</a> .
Monday, July 2	<b>Seven-week and eight-week MW evening</b> classes officially dropped on or before this date will not appear on the student’s record.
Tuesday, July 3	<b>Eight-week day and eight-week TTh evening</b> classes officially dropped on or before this date will not appear on the student’s record.
Wednesday, July 4	No Classes. Observance of Independence Day Holiday
Friday, July 6	Deadline to apply for August A.A./A.S. degree or certificate
Wednesday, July 18	Last day to withdraw officially from <b>six-week</b> classes with assurance of a “W” grade. For <b>short courses</b> the withdrawal deadline is at 75% of class meetings. For exact deadline date, check course in WebSMART: <a href="http://collegeofsanmateo.edu/websmart">collegeofsanmateo.edu/websmart</a> .
Tuesday, July 24	Last day to withdraw officially from <b>seven-week</b> classes with assurance of a “W” grade.
Thursday, July 26	Last day to withdraw officially from <b>eight-week TTh evening</b> classes with assurance of a “W” grade.
Saturday, July 28	End of six-week session
Monday, July 30	Last day to withdraw officially from <b>eight-week day and eight-week MW evening</b> classes with assurance of a “W” grade.
Saturday, August 4	End of seven-week session
Saturday, August 11	End of eight-week session
Thursday, August 16	Summer 2012 official grades available on WebSMART ( <a href="http://collegeofsanmateo.edu/websmart">collegeofsanmateo.edu/websmart</a> )
Monday, August 20	Fall 2012 Semester begins

\*For Student Educational Plan (SEP) assistance, contact Counseling at 574-6400.

## Who May Attend CSM

Any person who is a high school graduate, or who has passed the California High School Proficiency Examination or the General Education Development Examination (GED), or who is 18 years of age or older is eligible to attend this public community college. See page 5 for enrollment steps.

High school students may be admitted for concurrent enrollment with the permission of the dean of enrollment services. See College Connection Concurrent Enrollment Program on this page for details.

### Open Enrollment

Every course offered at College of San Mateo (unless specifically exempted by legal statute) is open for enrollment and participation by any person who has been admitted to the College and who meets the prerequisites of the course provided that space is available.

### Residency

Students who have been California residents (as defined in the Education Code) for more than one year prior to the beginning of any semester are eligible to enroll as residents for that semester. Nonresident students are those U.S. citizens who have not been residents of California (as defined in the Education Code) continuously for one year prior to the start of the semester. They are required to pay a tuition fee of \$203 per unit at the time of registration, in addition to other required fees paid by California residents. Students may be required to present documentary evidence of eligibility for classification as residents.

Students need not be U.S. citizens to be classified as residents. Permanent resident aliens and many other citizens of other countries are eligible to establish California residency.

### International Students

Residents of other countries may apply for admission as F-1 Visa students through the International Student Program. Special international student applications, related forms and additional information may be obtained from the International Student Office (Building 10, Room 310). For office hours and more information, call +1 (650) 574-6525 or go to [collegeofsanmateo.edu/international](http://collegeofsanmateo.edu/international).

To be eligible for priority admission for the semesters listed below, special applications should be filed in the International Student Office by these dates:

Spring 2013 (January-May) . . . . . October 1, 2012  
 Fall 2013 (August–December) . . . . . April 15, 2013

### AB 540 Students

Under Assembly Bill 540 (AB540), you may be exempt from paying non-resident tuition. Students who have attended a California high school for three years AND received a California high school diploma or its equivalent, such as a GED or passing the high school proficiency exam, are exempt from paying non-resident tuition. If you are qualified, please complete the AB540 form and submit it by fax (650) 574-6506, by mail, or in person to the CSM Admissions and Records Office located in Building 10, Third Floor. You may obtain the form from the CSM website at [collegeofsanmateo.edu/forms](http://collegeofsanmateo.edu/forms), or from the Admissions and Records Office.

## International Education

College of San Mateo welcomes international students, who enrich the academic, cultural, and social life of the campus by bringing a diversity of ideas and multicultural perspectives to the classroom and by providing opportunities beyond the classroom for all CSM students to engage in conversations and activities that create a broader understanding of the global community in which we all live.

College of San Mateo's International Education Program provides extensive support services for international students including an efficient admissions process, assistance with financial aid, a welcoming on-campus orientation, and ongoing counseling and advising throughout the students' enrollment at the college. Dedicated, student-centered professors, small class size, and state-of-the-art facilities create a robust instructional environment in which students grow intellectually and prepare for transfer to a four-year institution or for further training in a career. For information, contact Maggie Skaff: [skaff@smccd.edu](mailto:skaff@smccd.edu) or (650) 574-6525.

## Distance Education

College of San Mateo is committed to meeting the evolving needs and expectations of its students and community through the expansion of alternative means of delivering instructional and student support services.

Distance education courses consist of online and hybrid courses. Online courses are conducted through a class website, and there are no mandatory campus meetings. Hybrid courses are conducted mostly online but do have at least one meeting on campus. Most CSM distance education courses are applicable toward associate degree credit, and many satisfy transfer course requirements. Additionally, students enrolled in distance education courses have the same access to financial aid as those enrolled in on-campus courses.

Distance education courses may not be right for all students. They give students greater freedom of scheduling, but they also require more self-discipline than on-campus courses. How well distance education courses fit into a student's educational and career goals depends on many factors. It is important for first-time distance education students to review the information available on the distance education website at [collegeofsanmateo.edu/distanceeducation/gettingstarted.asp](http://collegeofsanmateo.edu/distanceeducation/gettingstarted.asp). For those students who are able to create the right environment, have the right study habits, and understand the technical and academic requirements, CSM's distance education courses can be as effective as on-campus courses in terms of student learning.

The Distance Education Office is available to assist students and answer questions in order to ensure College of San Mateo students have a successful distance learning experience. Please contact Ron Andrade ([andrader@smccd.edu](mailto:andrader@smccd.edu)) at College Center, Building 10, Room 437, (650) 524-6933 or visit the distance education website at [collegeofsanmateo.edu/distanceeducation](http://collegeofsanmateo.edu/distanceeducation).

## Getting Started at CSM

### Continuing Students Priority Registration

Priority Registration gives specific groups of students the opportunity to register for classes early. Generally, groups are given priority based on maintaining current Student Educational Plans, completing the Matriculation process, and earning a total number of units with the district. See Summer 2012 Important Dates on page 3 for a breakdown of the Priority Registration days, dates and the groups included for each day.

Students who attended the Spring 2012 semester are considered continuing students with priority registration. In mid-April, students will be sent a WebSMART registration appointment email which will contain their individual appointment date. Continuing students may register and pay fees using WebSMART on or after their appointment date.

### Application Process for NEW and FORMER Students

All students who have not attended any of the last three semesters must submit an Application for Admission for the Summer 2012 term. Submit an Application for Admission at [collegeofsanmateo.edu/apply](http://collegeofsanmateo.edu/apply). After being admitted, and completing matriculation requirements, if applicable, new and former students may register and pay fees using WebSMART. See Summer 2012 Important Dates on page 3.

### College Connection Concurrent Enrollment Program

The High School College Connection Concurrent Enrollment Program is a special program designed to provide current 9<sup>th</sup>–12<sup>th</sup> graders the opportunity to get an "early start" on their college experience and earn college credit. Enrollment fees are free to California residents who enroll in less than 11 units.

Step 1: Apply for admission online at [collegeofsanmateo.edu/apply](http://collegeofsanmateo.edu/apply).

Step 2: Meet with your high school counselor to select your college courses.

Step 3: Take placement tests at CSM if you are planning to register for English or math courses. Call (650) 574-6175 for information.

Step 4: Submit completed Course Request Form to the Admissions and Records Office at College of San Mateo, Building 10, Third Floor, by mail, in person, or by fax (650) 574-6506

Step 5: Register for classes at [collegeofsanmateo.edu/webSMART](http://collegeofsanmateo.edu/webSMART).

Step 6: Sign in and use your assigned SMCCD email.

For more information, visit [collegeofsanmateo.edu/ce](http://collegeofsanmateo.edu/ce).

### Priority Enrollment Program (PEP)

*For Graduating High School Seniors and Other New or Returning Students*

College of San Mateo offers a special enrollment program that provides priority access to matriculation services and enrollment for students who plan to enter the College in Fall 2012. The Priority Enrollment Program (PEP) is offered on dates beginning in March 2012. More information about PEP can be found at [collegeofsanmateo.edu/pep](http://collegeofsanmateo.edu/pep). The Fall 2012 PEP program information will be available in January 2012.

### Transfer Students

If you attended a college or university other than College of San Mateo, Cañada College or Skyline College, you are a transfer student at College of San Mateo and must apply for admission. You may be eligible for exemptions from some of the matriculation requirements. Please visit [collegeofsanmateo.edu/collegepolicies/matriculation.asp](http://collegeofsanmateo.edu/collegepolicies/matriculation.asp) for more information.

Students who have completed lower division coursework at other colleges and universities and wish to apply that credit to the completion of a College of San Mateo certificate, associate degree, or to a California State University General Education Certification, or to an IGETC Certification should have their transcripts officially evaluated. For more information, review the Transcript Evaluation Request Form available on the College of San Mateo website ([collegeofsanmateo.edu/forms](http://collegeofsanmateo.edu/forms)).

### Dismissed Students

Students on dismissal status within the San Mateo County Community College District must go through a process to request reinstatement and permission to enroll in classes. The first step of this process at College of San Mateo is to attend a Reinstatement Workshop. To schedule a reservation for a workshop go to the Counseling Office in Building 10, Third Floor. Students must complete the workshop and the reinstatement process prior to the registration deadline date for the term for which they request enrollment.

Students who were dismissed and who have NOT been in attendance at College of San Mateo, Cañada, or Skyline College since Fall 2010 must complete an application for admission prior to attending the Reinstatement Workshop.

### College Catalog

The College of San Mateo Catalog contains detailed course descriptions, suggested programs of study, a list of transferable courses, degree and certificate requirements, and general college information. The catalog can be obtained at the Bookstore or viewed online at [collegeofsanmateo.edu/catalog](http://collegeofsanmateo.edu/catalog).

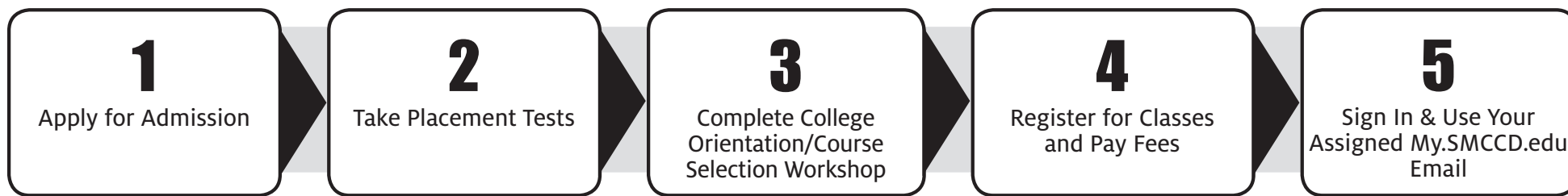
### Bookstore

Books and supplies may be purchased at the College of San Mateo Bookstore (College Center, Building 10, Second Floor). Hours are Monday through Thursday only from 7:45 am to 7:00 pm, (574-6366). For special business hours, to purchase and find information regarding course textbooks, go to [collegeofsanmateo.edu/bookstore](http://collegeofsanmateo.edu/bookstore).

*Have questions or need assistance?*

Please visit: [collegeofsanmateo.edu/contactcsm](http://collegeofsanmateo.edu/contactcsm)

## Steps to Successful Enrollment



**If Your Educational Goal is to** obtain an associate degree or certificate; transfer to a four-year university; improve basic skills in English, reading or math; **or** if you are applying for financial aid; **or** if you are undecided about your goal, **you must follow all steps shown above.**

**If Your Educational Goal is to** take courses for personal enrichment; upgrade job skills; maintain a certificate or license; participate in the High School Concurrent Enrollment Program; **or** if you have already completed an associate degree or higher in the United States; **or** if you are primarily a student at another college or university and taking courses at College of San Mateo to meet the requirements of institution, **you must follow steps 1, 4 and 5.**

### Step 1: Apply

All students are required to complete the Application for Admission. Fill out the Application online at [collegeofsanmateo.edu/apply](http://collegeofsanmateo.edu/apply).

After the application has been received, you will be sent an email confirmation with additional information. You will also receive a student identification number (which begins with a "G"). Use this number to conduct all college business and access college services.

### Step 2: Take Placement Tests

Placement tests are designed to assess your skills in English or ESL, reading, and mathematics. Test results assist you to select courses, build an appropriate schedule of classes and determine whether you meet prerequisites for certain courses. View sample test questions online at [collegeofsanmateo.edu/testing](http://collegeofsanmateo.edu/testing).

To schedule placement tests, log into your student WebSMART account. The USER ID is your G number and the password

is your 6 digit birth date. In WebSMART, click on STUDENT RECORDS AND STUDENT APPOINTMENTS. At this site find CSM Placement Testing and schedule your placement test appointment online.

- You must complete the application for admission and have a student G number to schedule a testing appointment.
- You must present a photo ID and your student G number on the day of testing (no exceptions).
- There is no fee for testing and it takes approximately 2.5 hours to complete.
- The Assessment Center is located in College Center, Building 10, Third Floor, Room 370.

If you are transferring from another college or university in the United States, have already successfully completed math and English classes, and think you do not need to complete CSM placement tests, then complete a Prerequisite Equivalency Form (available at [collegeofsanmateo.edu/forms](http://collegeofsanmateo.edu/forms)). Take the completed form and required documentation to the Prerequisite Drop Box located outside of the Assessment Center and proceed to Step 3

### Step 3: College Orientation/ Course Selection Workshop

Attend the College Orientation and Course Selection Workshop in College Center, Building 10, Room 191. You are required to bring your placement test results and to be on time. Latecomers are not admitted to the workshop, so plan to arrive on campus early. At the completion of the workshop you will be able to register for classes and you are eligible to schedule an appointment to meet with a counselor.

This two and a half hour workshop covers the registration process, use and management of WebSMART, educational goals, placement test results, course selection, and more. Reservations for College Orientation and the Course Selection Workshop are scheduled through your student WebSMART account, or go to the Counseling Center, College Center, Building 10, Room 340.

### Step 4: Register for Classes

Your appointment to register will be sent to your student WebSMART account. To log-in, you will need a User ID (G number) and password (six digit birth date). Use your student WebSMART account to view your registration appointment, register for classes and pay fees.

Many courses with prerequisites are subject to computerized prerequisite checking. When registering for a class, the course number entered on WebSMART is verified by the registration system through the college district's student database for 1) the successfully completed prerequisite course, or 2) the placement test results that indicate the skill level prerequisite requirements. If neither requirement is met, registration for the course will be blocked. If you have completed the prerequisite course outside of the college district, then see Step 2 or go to [collegeofsanmateo.edu/prerequisites](http://collegeofsanmateo.edu/prerequisites) for more information.

### Step 5: Sign In and Use Your Assigned My.SMCCD.edu Email

All college electronic communications will be sent to your my.smccd.edu email address. You can expect to receive important email messages from your professors and the college before the first day of school. Log into your WebSMART student account to find your email address and password and check it regularly.

## Financial Aid

Complete a Free Application for Federal Student Aid (FAFSA) to automatically be considered for all of the following programs.

### Board of Governor's Fee Waiver (BOGFW)

The State of California offers a BOGFW for students who are residents of the State of California, attend a community college, and are eligible for need-based financial aid. The BOGFW pays the enrollment fee for the student for the academic year when eligibility has been determined. Other fees, such as parking (at a reduced rate of \$20 for BOGFW students), health, student body and student representation, must be paid by the student.

### Federal Pell Grant

You are automatically considered for a Federal Pell Grant when you file the FAFSA. If you receive an Expected Family Contribution (EFC) of 5200 or less on the Student Aid Report (SAR), you are eligible for a Federal Pell award. Less than half-time students have a much lower EFC cut-off to be eligible for a grant. Awards for students are prorated based on enrollment status: full-time 12 or more units; half-time 6-8.5 units; three-quarter time 9-11.5 units; less than half .5-5.5 units. Awards range from: \$277-5550.

### Cal Grant A, B and C Deadline to Apply is March 2 or September 2

Cal Grants are for California residents only. They are awarded by the California Student Aid Commission for attendance in schools in California only. Maximum awards are: Cal Grant B \$1,551; Cal Grant C \$576.

### Federal Supplemental Educational Opportunity Grant (FSEOG)

FSEOG is a grant awarded to students with exceptional need (EFC of 0 through 1,000). Awards range from: \$100-\$800. Priority application date: March 2. Visit [www.icanaffordcollege.com](http://www.icanaffordcollege.com)

### California Chafee Grant (CHAFEE)

The California Chafee Grant Program awards funds to eligible current or former foster youth for career and technical training or college courses. Eligible Chafee applicants are required to be, or to have been, in foster care between their 16<sup>th</sup> and 18<sup>th</sup> birthdays, and to not have reached the age of 22 by July 1 of the award year. Maximum annual award: \$5,000.

### Extended Opportunity Programs and Services (EOPS)

EOPS is a statefunded program that provides book vouchers,

grants, support services, and limited transportation services to high-need, educationally disadvantaged students who are California residents. Students must complete the FAFSA and/or a BOGFW application to apply. Students must be enrolled full-time at the time of application. Final eligibility for EOPS and CARE is determined and coordinated through the EOPS Office.

### Student Employment Federal Work Study (FWS)

Students who apply for financial aid and complete the Student Information Sheet and the FAFSA by March 2 are given priority. Maximum Annual Award: up to \$6,000. Priority application date: March 2.

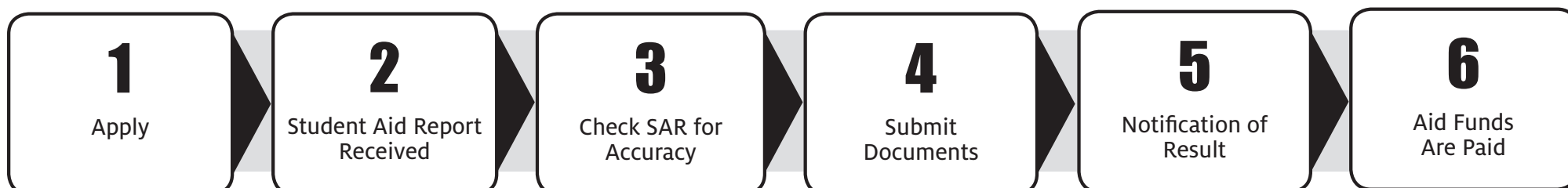
### Loans

Loans are financial aid funds that students borrow now and repay after they complete a program of study or stop going to school. Loan amounts vary from \$500-\$6,500.

### Scholarships

Scholarships are awarded for a variety of criteria. Awards range from \$100-2,500. Scholarships are available from College and Foundation resources and many external organizations. Contact the Financial Aid Office at 574-6514 for more information.

## Financial Aid Steps



### Step 1: Apply

For 2011-12 file a 11-12 FAFSA at [www.fafsa.ed.gov](http://www.fafsa.ed.gov). College of San Mateo's college code is 001181. FILE EARLY for the upcoming year (anytime after January 1)!

### Step 2: Student Aid Report Received

After you apply, you'll receive a Student Aid Report (SAR). Your SAR contains the information reported on your FAFSA and usually includes your Expected Family Contribution (EFC). The EFC, a measure of your family's financial strength, is used to determine your eligibility for federal student aid.

### Step 3: Check SAR for Accuracy

Your SAR must be checked for accuracy and then brought to the Financial Aid Office for review. Please check WebSMART for any additional information required to complete your file before submitting your SAR to the office.

### Step 4: Submit Documents

Submit all required documents to College of San Mateo's Financial Aid Office. File is complete!

### Step 5: Notification of Result

Check WebSMART to learn the status of your financial aid. College of San Mateo will notify eligible students in WebSMART by an award letter outlining the types and amount of Financial Aid they qualify for at CSM.

### Step 6: Aid Funds are Paid!

You will receive a check in the mail or if you signed up for direct deposit funds will be electronically deposited into your bank account.

# 6 EDUCATIONAL GOALS: ASSOCIATE DEGREES, CERTIFICATES, TRANSFER

## Educational Goals at CSM

View the College Catalog and the College website, [collegeofsanmateo.edu](http://collegeofsanmateo.edu), for more information about goals and opportunities at College of San Mateo.

### University Transfer Program

Complete your freshman and sophomore years of university work at College of San Mateo and transfer as a junior to a baccalaureate level college or university. College of San Mateo can help you plan an educational program to prepare you to transfer to the University of California, California State University or private college or university to earn a bachelor's degree. Assistance from Counseling Services and Transfer Services can ensure a smooth transition to the transfer institution of your choice. With planning, it is possible to concurrently complete an associate degree as you complete coursework to facilitate university transfer.

### Senate Bill 1440 - New Associate Degrees for Transfer (AA-T or AS-T) Benefit Students Intending to Transfer to CSU

California community colleges, as a result of SB 1440, offer associate degrees designed to support transfer to the California State University system and concurrent completion of an associate degree with one clear pathway of coursework. Students who complete an AA-T or AS-T secure priority admission to the California State University system. A list of associate degrees for transfer (AA-T/AS-T) is located in the CSM Catalog and on the Transfer Services website. For more information about SB 1440 and advantages to completing an AA-T or AS-T go to [www.sb1440.org](http://www.sb1440.org).

### Associate in Arts and Associate in Science Degree Programs

At College of San Mateo you can select from over 80 associate degree majors, or choose to complete multiple degrees to enhance career and job opportunities or for personal enrichment. Graduation from

College of San Mateo with the associate in arts or science degree is based upon the completion of 60 units of lower-division college-level work, which includes major, basic competency, and general education requirements. For a complete list of associate degree majors and courses required to satisfy each major refer to the CSM Catalog.

### Certificate Programs

You can earn a certificate in achievement or a certificate of specialization in over 80 areas. Certificate programs are designed to prepare you for employment. All certificate programs are carefully developed by advisory committees composed of college staff and selected representatives from the business and industrial community. Typically certificates require 12-40 units of coursework and can be completed in one semester or over several semesters. Certificates are awarded upon successful completion of requirements listed in the CSM Catalog.

### Gainful Employment Disclosure Information

Final regulations published in the Federal Register on October 29, 2010, [75 FR 66665 and FR 66832], by the U.S. Department of Education, require all institutions that participate in the student financial assistance programs authorized under Title IV of the Higher Education Act of 1965, to report certain information about students who enrolled in Title IV - eligible educational programs that lead to gainful employment in a recognized occupation. College of San Mateo's report on educational programs leading to gainful employment is available at [collegeofsanmateo.edu/degrees](http://collegeofsanmateo.edu/degrees).

### Multiple Educational Goals

At College of San Mateo you are free to pursue your educational interests for personal and career growth and development. This may mean that you want to complete certificates, associate degrees, and

transfer. You are not limited to selecting one educational goal.\*

\*Students participating in the some special programs (such as the CSM Financial Aid program) are required to declare one educational goal.

### Updating Job Skills

You may find classes and programs that appeal to you for updating your job skills or advancement in your career.

### Program Planning and Enrollment Management

Students enrolling at College of San Mateo should plan a program of study that will meet their educational and career goals. All enrolled students have access to counseling services and should consult with a counselor early in the educational process for guidance and academic planning assistance. Students often have multiple goals and plan to complete a college certificate, an associate degree, and/or transfer to a university to complete a baccalaureate degree.

If in the course of enrollment at College of San Mateo, students find it advisable to change their program of study or educational goal, they may do so. These changes should be discussed with a counselor and students should be aware that any changes may result in extending the time necessary to fulfill the certificate or degree or transfer requirements. Ultimately, students maintain full responsibility for planning their educational programs and for their enrollment management.

Students are responsible for maintaining current and accurate information in their WebSMART accounts and updating personal contact information and educational goal information, managing registration and enrollment, retrieving grades and placement test results, and monitoring academic standing.

## A.A./A.S. Degree and Certificates Offered at CSM

The A.S./A.S. Degree Requirements worksheet can be obtained from the CSM Catalog, the Counseling Office, or at [collegeofsanmateo.edu/degrees/requirements.asp](http://collegeofsanmateo.edu/degrees/requirements.asp).

<b>ACCOUNTING</b> . . . . .	AA/CERT
Accounting Assistant . . . . .	CERT
CPA Exam Preparation: Financial Accounting & Auditing . . . . .	CERT
CPA Exam Preparation: Business Environment & Regulation . . . . .	CERT
Enrolled Agent Exam Preparation . . . . .	CERT
Tax Preparer I . . . . .	CERT
Tax Preparer II . . . . .	CERT
<b>ADMINISTRATION OF JUSTICE</b> . . . . .	AS/CERT
Regular Basic Course Standard Format . . . . .	CERT
<b>ALCOHOL AND OTHER DRUG STUDIES</b> . . . . .	AA/CERT
<b>ARCHITECTURE</b> . . . . .	AS
<b>ART: COMMERCIAL</b> . . . . .	AA
<b>ART: ART HISTORY</b> . . . . .	AA/CERT
<b>ART: FINE ARTS</b>	
Drawing . . . . .	AA
General Studio Art . . . . .	AA
Painting . . . . .	AA
Photography . . . . .	AA
Printmaking . . . . .	AA
<b>BIOLOGY</b>	
Biological . . . . .	AS
Biotechnology . . . . .	AS/CERT
General . . . . .	AS
Medical . . . . .	AS
Pre-Nursing . . . . .	AS
<b>BROADCAST AND ELECTRONIC MEDIA</b>	
Broadcast Audio . . . . .	AA/CERT
Editing I . . . . .	CERT
Lighting . . . . .	CERT
On-Air . . . . .	CERT
Television Producing . . . . .	AA/CERT
Television Production . . . . .	AA/CERT
<b>BUILDING INSPECTION TECHNOLOGY</b> . . . . .	AS/CERT
<b>BUSINESS</b>	
Business Administration, Option 1 (non-transfer) . . . . .	AA
Business Administration, Option 2 (transfer) . . . . .	AA
Insurance – Property and Casualty . . . . .	AA/CERT
Merchandising (General) . . . . .	CERT
Merchandising (Management) . . . . .	AA/CERT
Microcomputer/Database & Spreadsheet . . . . .	AA/CERT
Microcomputer/Office Assistant . . . . .	AA/CERT
Office Assistant I . . . . .	CERT
Office Assistant II . . . . .	CERT

<b>CHEMISTRY</b> . . . . .	AS
<b>COMMUNICATION STUDIES</b> . . . . .	AA/AA-T*/CERT
<b>COMPUTER AND INFORMATION SCIENCE</b> . . . . .	AS
C++ Programming . . . . .	CERT
CIS Network Security Support . . . . .	CERT
Computer & Network Forensics . . . . .	AS/CERT
Computer Science Applications & Development . . . . .	AS/CERT
Computer Support Specialist . . . . .	AS/CERT
Computer Forensics . . . . .	CERT
Internet Programming . . . . .	CERT
Java Programming . . . . .	CERT
<b>COSMETOLOGY</b> . . . . .	AA/CERT
<b>DENTAL ASSISTING</b> . . . . .	AS/CERT
<b>DIGITAL MEDIA*</b>	
Digital Audio . . . . .	AA/CERT
Digital Video Production . . . . .	AA
Lighting . . . . .	CERT
Television and Radio Broadcasting . . . . .	CERT
Television Producing . . . . .	AA
Video Journalism . . . . .	CERT
Graphic Design . . . . .	AA/CERT
Graphic Production . . . . .	CERT
Journalism . . . . .	AA/CERT
Web/Multimedia . . . . .	AA/CERT
Multimedia . . . . .	AA/CERT
Web Design . . . . .	AA/CERT
Web Developer . . . . .	AA/CERT
<b>DRAFTING/CAD</b> . . . . .	AS/CERT
Computer Aided Design . . . . .	CERT
<b>ELECTRICAL TECHNOLOGY</b>	
Inside Wireman . . . . .	CERT
<b>ELECTRONICS TECHNOLOGY</b>	
Electrical Power Systems and Instrumentation* . . . . .	CERT
Industrial Electronics . . . . .	AS/CERT
<b>ENGINEERING</b> . . . . .	AS
Engineering Technology - General . . . . .	AS
<b>ENGLISH</b> . . . . .	AA
<b>ETHNIC STUDIES</b> . . . . .	AA
<b>FILM</b> . . . . .	AA
<b>FIRE TECHNOLOGY</b> . . . . .	AS/CERT

<b>GEOLOGICAL SCIENCES</b> . . . . .	AS
<b>GLOBAL STUDIES</b> . . . . .	CERT
<b>GRAPHICS</b> . . . . .	AA/CERT
<b>HORTICULTURE</b>	
Floristry . . . . .	AS/CERT
Landscape/Construction Design . . . . .	AS/CERT
Landscape Management . . . . .	AS/CERT
Nursery Management . . . . .	AS/CERT
<b>INTERDISCIPLINARY STUDIES</b>	
Contemporary Issues . . . . .	AA
Intercultural Studies . . . . .	AA
Science & Society . . . . .	AA
<b>JOURNALISM</b> . . . . .	AA
<b>KINESIOLOGY*</b> . . . . .	AA
Pilates Mat Instructor . . . . .	CERT
Pilates Mat & Reformer Instructor . . . . .	CERT
Pilates Instructor . . . . .	CERT
Yoga Instructor . . . . .	CERT
<b>MANAGEMENT</b>	
Business Management . . . . .	AA/CERT
Human Resources Management . . . . .	CERT
Marketing Management . . . . .	AA/CERT
Project Management . . . . .	CERT
Retail Management . . . . .	AA/CERT
<b>MATHEMATICS</b> . . . . .	AS/AS-T*
<b>MULTIMEDIA</b>	
Digital Audio . . . . .	AA/CERT
Digital Video . . . . .	AA/CERT
Web Design . . . . .	AA/CERT
<b>MUSIC</b> . . . . .	AA
Electronic Music . . . . .	AA/CERT
<b>NURSING</b> . . . . .	AS
<b>PHYSICAL SCIENCE</b> . . . . .	AS
<b>PHYSICS</b> . . . . .	AS
<b>REAL ESTATE</b> . . . . .	AA/CERT
<b>SOCIAL SCIENCE</b> . . . . .	AA
<b>SOCIOLOGY</b> . . . . .	AA-T*
<b>SPANISH</b> . . . . .	AA/CERT
<b>SPRINKLER FITTER</b> . . . . .	AS/CERT
<b>UNIVERSITY TRANSFER</b> . . . . .	CERT

\*Pending approval by the State Chancellor's Office.  
2/23/12

### District Programs Not Offered at CSM

San Mateo County Community College District also operates Cañada College in Redwood City and Skyline College in San Bruno which offer a number of special programs not available at College of San Mateo:

**Cañada College**  
4200 Farm Hill Blvd.,  
Redwood City, CA 94061  
(650) 306-3100 or (650) 364-1212  
**Programs**  
Computer Business Office  
Technology  
Drama/Theater Arts  
Early Childhood Education  
Earth Science  
English Institute

Fashion Design  
Human Services  
Interior Design  
Medical Assisting  
Paralegal  
Radiologic Technology  
**Athletics**  
Men's Basketball  
Men's Soccer  
Women's Golf  
Women's Soccer

**UNIVERSITY CENTER**  
Bachelor degree programs in partnership with Bay Area universities.  
(650) 306-3399

**Skyline College**  
3300 College Drive,  
San Bruno, CA 94066  
(650) 738-4100 (day)  
(650) 738-4251 (evening)  
**Programs**  
Arabic  
Asian Studies  
Chinese Studies  
Automotive Technology  
Biotechnology  
Central Service/Sterile Processing  
Early Childhood Education  
Earth Science

Environmental Science and Technology  
Esthetician (Eve. & Sat.)  
Family and Consumer Sciences  
Fashion Merchandising  
Filipino  
International Logistics  
International Studies  
International Trade  
Image Consulting  
Medical Assistant  
Medical Billing and Coding  
Paralegal  
Respiratory Therapy  
Solar Energy Technology

Solar Installation  
Surgical Technology  
Telecommunications and Network Information Technology  
**Athletics**  
Men's Basketball  
Men's Soccer  
Men's Wrestling  
Women's Badminton  
Women's Soccer  
Women's Volleyball

**CALIFORNIA STATE UNIVERSITY GENERAL EDUCATION (CSU GE) 2011-12 EDITION**

Name: \_\_\_\_\_ CSM ID#: G \_\_\_\_\_  
Last name First name  
 Major: \_\_\_\_\_ Transfer institution: \_\_\_\_\_

CSU GE \_\_\_ CSU GE partial \_\_\_ CSU AH&I met \_\_\_

To Apply AP, IB, or CLEP Exam Results to CSU GE Use Charts in the CSM Catalog Mark X in the appropriate column for each category: C = Completed; IP = In Progress	C	IP
<b>AREA A: COMMUNICATION SKILLS &amp; CRITICAL THINKING</b> <span style="float:right">9 units</span> One course required from each subsection. Grades of "C" or better required in Area A coursework		
<b>A1 Oral Communication</b> COMM 110, 130, 140, 150 Course from other college _____	A1	
<b>A2 Written Communication</b> ENGL 100 or AP Score of 3, 4, or 5 in ENGL/LANG or ENGL/LIT Course from other college _____ AP _____	A2	
<b>A3 Critical Thinking</b> ENGL 110, 165 PHIL 103 Course from other college _____	A3	
<b>AREA B: NATURAL SCIENCE &amp; MATHEMATICS</b> <span style="float:right">10 units</span> One course each from Physical Science, Life Science, and Math Concepts. At least one of the science courses must include a lab as part of the course or as a separate lab section as identified by *		
<b>B1 Physical Science</b> ASTR 100, 101*, 103*, 115, 125 CHEM 210*, 220*, 231*, 232*, 250*, 410* GEOG 100 GEOL 100, 101* METE 100, 101* OCEN 100, 101* PALN 110, 111* PHYS 100, 101*, 210*, 220*, 250*, 260*, 270* or AP Score of 3,4, or 5 in CHEM or ENV SCI or PHYSICS These AP s meet B1 and B3. Course from other college _____ AP/IB/CLEP _____	B1	
<b>B2 Life Science</b> BIOL 100, 102, 110*, 130, 145, 184, 195*, 210*, 220*, 230*, 240*, 250*, 260*, 675 OCEN 100, 101* PALN 110, 111* PSYC 105, 220 or AP Score of 3,4, or 5 in BIOLOGY - meets B2 and B3 Course from other college _____ AP/IB/CLEP _____	B2	
<b>B3 Lab Courses identified by *</b> Course from other college _____ or AP Score of 3,4, or 5 in BIO or CHEM or ENV SCI or PHYSICS	B3	
<b>B4 Math Concepts</b> CIS 278 ECON 123 MATH 125, 130, 145, 147, 200, 222, 241, 242, 251, 252, 253, 268, 270, 275 (Grade of "C" or better in B4) PSYC 121 or AP Score of 3, 4, or 5 in CALC AB or CALC BC or STATISTICS Course from other college _____ AP/IB/CLEP _____	B4	
<b>AREA C: ARTS, LITERATURE, PHILOSOPHY &amp; LANGUAGES</b> <span style="float:right">9 units</span> Choose at least one course from the Arts and at least one course from the Humanities; courses must be from at least two disciplines		
<b>C1 Arts</b> ARCH 100 ART 101, 102, 103, 104, 124, 207, 350, 351 DGME 215 ETHN 288, 585 FILM 100, 120, 121, 200, 215 HUM. 114 MUS. 100, 131, 202, 250, 275 or AP Score of 3,4, or 5 in ART HIST or MUST Course from other college _____ AP/IB _____	C1	
<b>C2 Humanities</b> ANTH 180 ASL 121,122 CHIN 111,112, 121, 122, 131, 132 COMM 170, 171 ENGL 110, 161, 162, 163 ETHN 265,350, 351 ETHN 440 FILM 153 HUM. 114, 125, 140, 676 ITAL 110, 111, 112, 121, 122 JAPN 110,111,112,120,121,122 LIT. 101, 105, 113, 151, 201, 202, 220, 231, 232, 430 PHIL 100,244,300 SPAN 110,111,112,120,121,122,130,131,132 SPAN 140, 161, 162, 251 or AP Score of 3,4, or 5 in ART HIST or HIST or FOREIGN LANGUAGE Course from other college _____ AP/IB./CLEP _____	C2	
<b>AREA D: SOCIAL, POLITICAL &amp; ECONOMIC INSTITUTIONS</b> <span style="float:right">9 units</span> Three courses selected from at least two disciplines		
ADMJ100 ANTH 110,180, 370 BUS. 125 COMM 130 DGME 100,102 ECON 100,102 ETHN 101,102,150,151,152, 261,262,300,360,440 GEOG 110, 150 HIST 100, 101, 102, 201, 202, 260, 310, 315, 350 HUM. 125 PLSC 100, 110,130, 200, 210, 215, 250,310 PSYC 100, 105, 110, 200, 201, 220, 225, 300, 410, 675 SOCI 100,105, 110, 141, 200, 340 or AP Score of 3,4, or 5 in ECON or GOV or HIST or GEOG or PSYC Course from other college _____ AP /IB/CLEP _____	D	
SEE U.S. HISTORY, U.S. CONSTITUTION, CALIFORNIA STATE AND LOCAL GOVERNMENT INFORMATION BELOW	D	
<b>AREA E: LIFELONG UNDERSTANDING &amp; SELF DEVELOPMENT</b> <span style="float:right">3 units</span> Two to three units may be selected from E1; a maximum of 1 unit from E2 CSU EXEC ORDER 1036: VETERANS who present to CSM Admissions and Records Office a DD 214 that lists at least one year active duty & honorable discharge can apply ACE military training to meet CSU GE Area E.		
<b>E1</b> BUS. 101 CRER 120, 121, 123, 138, 140 ETHN 151, 152 HSCI 100, 112 PSYC 100, 110, 300 SOCI 110, 340 Course from other college _____	E1	
<b>E2</b> COMB 102 DANC 116, 121, 150, 151, 152, 153, 161, 167, 195, 665 FITN 134, 201, 202, 206, 207, 225, 235, 237, FITN 301, 312, 334, 337, 338, 339 KINE 121, 122, 123 TEAM 119, 141, 145, 148 VARS 105, 172, 400 Course from other college _____	E2	

**U.S. HISTORY, U.S. CONSTITUTION, CALIFORNIA STATE AND LOCAL GOVERNMENT – CSU GRADUATION REQUIREMENTS**

Although not a transfer requirement, the CSU system requires coursework in U.S. History, U.S. Government, California State and Local Government for their bachelor degrees. The courses below meet CSU graduation requirements and may also be applied to satisfy CSU GE Area D at all CSU campuses if the CSU GE is certified. Choose one course per area:

- Area 1: US HISTORY HIST 102, 201, 202, 260
  - Area 2: US CONSTITUTION PLSC 200\*\*, 210\*\*, 215, 250
  - Area 3: CA STATE & LOCAL GOVERNMENT ETHN 101, 102 HIST 310 PLSC 200\*\*, 210\*\*, 310 SOCI 200
- \*\* meets Group 2 & Group 3  
 \*\* meets Group 2 & Group 3

Updated Sept 20, 2011

**INTERSEGMENTAL GENERAL EDUCATION TRANSFER CURRICULUM (IGETC) 2011-12 EDITION**

Name: \_\_\_\_\_ CSM ID#: G \_\_\_\_\_  
Last name First name  
 Major: \_\_\_\_\_ Transfer institution: \_\_\_\_\_

IGETC for UC \_\_\_ IGETC for UC partial \_\_\_ IGETC for CSU \_\_\_ IGETC for CSU partial \_\_\_ CSU AH&I met \_\_\_

Use AP & IB charts in this Catalog to view how to apply exam results to IGETC. Mark X in the appropriate column for each category: C = Completed; IP = In Progress	C	IP
<b>AREA 1: ENGLISH COMMUNICATION</b> <span style="float:right">9 units</span> CSU – Three courses required, one from each group below UC – Two courses required, one from Group A & B		
<b>A: English Composition</b> ENGL 100 AP Score of 3,4, or 5 in ENGL/LANG or ENGL/LIT Course from other college _____ AP _____	1A	
<b>B: Critical Thinking-English Composition</b> ENGL 110, 165 Course from other college _____	1B	
<b>C: Oral Communication (CSU requirement only)</b> COMM 110, 130, 140, 150 Course from other college _____	1C	
<b>AREA 2: MATHEMATICAL CONCEPTS &amp; QUANTITATIVE REASONING</b> <span style="float:right">3 units</span> ECON 123 MATH 125,145,147,200,222,241,242,251,252,253,268,270,275 PSYCH 121 AP Score of 3,4, or 5 in CALCABorCALCBCorSTATS Course from other college _____ AP/IB _____	2	
<b>AREA 3: ARTS &amp; HUMANITIES</b> <span style="float:right">9 units</span> Three courses with at least one from the Arts and one from the Humanities		
<b>A: Arts</b> ART 101, 102, 103, 104, 124 DGME 215 ETHN 288, 585 FILM 100, 120, 121, 200, 215 MUS. 100, 131, 202, 250, 275 AP Score of 3,4, or 5 in ART HIST Course from other college _____ AP/IB _____	3A	
<b>B: Humanities</b> CHIN131,132 ENGL110ETHN265,350,351,440HIST100,101,102HUM114,125 LIT 101,105,113,151,201,202,220,231,232,430 PHIL100,244,300 SPAN 130,131,132,140,161,162, 251 AP Score of 3,4,or5 in ART HISTorENGL/LITorHISTorFOR LANG Course from other college _____ AP/IB _____	3B 3A OR 3B	
<b>AREA 4: SOCIAL &amp; BEHAVIORAL SCIENCES</b> <span style="float:right">9 units</span> Three courses selected from at least two disciplines		
ANTH 110,180,370 DGME 100,102 ECON 100,102 ETHN 101,102,150,151,152,261,262,300,351,360,440 GEOG 110,150 HIST201,202,260 310,350 PLSC 100,110,130,200,210, 215,250 PSYC 100,105,110,200, 201, 220,225,300,410 SOCI 100,105,110,141,200,340 AP Score of 3,4, or 5 in ECON or GOV, or HIST or GEOG or PSYC Course from other college _____ AP/IB _____	4	
<b>AREA 5: PHYSICAL &amp; BIOLOGICAL SCIENCES</b> <span style="float:right">7 units</span> Two courses, one from Group A and one from Group B At least one of the two courses must incorporate a laboratory as noted in Group C		
<b>A: Physical Science</b> ASTR 100,101*,103*,115,125 CHEM 210#,220#,231#,232#, 250# GEOG100 GEOL100,101* METE100,101* OCEN 100,101* PALN110,111* PHYS100,101*,210#,220#,250#,260#,270# AP Score 3,4,or5 in CHEM or ENV SCI or PHYSICS all AP also covers Lab requirements Course from other college _____ AP/IB _____	5A	
<b>B: Biological Science</b> BIOL 100,102,110#,130,145,184,195*, 210#, 220#, 230#, 240#, 250#, 260# PALN110,111* PSYC 220 AP Score of 3,4,or5 in BIOL and covers Lab requirements Course from other college _____ AP/IB _____	5B	
<b>C: Science Laboratory</b> Any course in Group A or Group B with a " " indicates a "lab only" course. "Lab only" courses must be accompanied by the same subject lecture course. Any course in Group A or Group B with a " # " indicates the course incorporates both lecture and lab requirements. Course from other college _____ AP/IB _____	5C	
<b>AREA 6: LANGUAGE OTHER THAN ENGLISH</b> <span style="float:right">(UC requirement only)</span> View the college catalog for a complete list of options to satisfy Area 6. Any course from the list below satisfies Area 6. If your native language is not English, courses in your native language may not be accepted by the UC system. This requirement may be satisfied by successful completion of two years of high school study in the same language. High school transcripts required. Completed at high school _____ AP Score of 3, 4, or 5 in any FOR LANG		
ASL 112, 121, 122 CHIN 122, 131, 132, 140 ITAL 120, 122 JAPN 120, 122 SPAN 120, 122, 130, 131, 132, 140, 162, 251 Course from other college _____ AP/IB _____	6	

**NOT PART OF IGETC - CSU GRADUATION REQUIREMENTS**

Although not required for transfer, the CSU system requires for graduation courses in U.S. History and American Ideals, US Constitution, and California State and Local Government. (For UC, this requirement is typically completed in high school.) For CSU you may, choose one course per area below. Courses used to satisfy this CSU graduation requirement may also be applied to IGETC Area 4 requirements.

- Area 1: US HISTORY HIST 102, 201, 202, 260
  - Area 2: US CONSTITUTION PLSC 200\*\*, 210\*\*, 215, 250
  - Area 3: CA STATE & LOCAL GOVERNMENT ETHN 101, 102 HIST 310 PLSC 200\*\*, 210\*\*, 310 SOCI 200
- \*\* meets Group 2 & Group 3  
 \*\* meets Group 2 & Group 3

Updated September 20, 2011













**READING**

**READ 412 COLLEGE-LEVEL INDIVIDUALIZED READING IMPROVEMENT (CSU)**  
 54002 READ 412 AO By Arr 4.0-24.0 Hrs/Wk 18-101 Vasquez 0.5-3.0  
 Start and end dates for section 54002: 6/18 7/26

**READ 454 COLLEGE-LEVEL VOCABULARY IMPROVEMENT I (CSU)**  
 54000 READ 454 AO By Arr 4.0-13.0 Hrs/Wk 18-101 Vasquez 0.5-1.5  
 Start and end dates for section 54000: 6/18 7/26

**READ 455 COLLEGE-LEVEL VOCABULARY IMPROVEMENT II (CSU)**  
 54001 READ 455 AO By Arr 4.0-13.0 Hrs/Wk 18-101 Vasquez 0.5-1.5  
 Start and end dates for section 54001: 6/18 7/26

**READ 812 INDIVIDUALIZED READING IMPROVEMENT**  
 51553 READ 812 AO By Arr 4.0-24.0 Hrs/Wk 18-101 Vasquez 0.5-3.0  
 Start and end dates for section 51553: 6/18 7/26

**READ 814 BASIC SPELLING MASTERY**  
 52462 READ 814 AO By Arr 4.0-8.0 Hrs/Wk 18-101 Vasquez 0.5-1.0  
 Start and end dates for section 52462: 6/18 7/26

**READ 815 ADVANCED SPELLING MASTERY**  
 52463 READ 815 AO By Arr 4.0-8.0 Hrs/Wk 18-101 Vasquez 0.5-1.0  
 Start and end dates for section 52463: 6/18 7/26

**READ 825 INTRODUCTION TO COLLEGE READING**  
*Online Course*  
 54496 READ 825 OLH By Arr 6.0 Hrs/Wk ONLN Marron 3.0  
 TBA Hours: 2.0 Hrs/Wk 4-ONLN  
 Start and end dates for section 54496: 6/18 8/9

**READ 830 COLLEGE AND CAREER READING**  
*Online Course*  
 54497 READ 830 OLH By Arr 6.0 Hrs/Wk ONLN Marron 3.0  
 TBA Hours: 2.0 Hrs/Wk 4-ONLN  
 Start and end dates for section 54497: 6/18 8/9

**READ 852 VOCABULARY IMPROVEMENT I**  
 52466 READ 852 AO By Arr 4.0-13.0 Hrs/Wk 18-101 Vasquez 0.5-1.5  
 Start and end dates for section 52466: 6/18 7/26

**READ 853 VOCABULARY IMPROVEMENT II**  
 52467 READ 853 AO By Arr 4.0-13.0 Hrs/Wk 18-101 Vasquez 0.5-1.5  
 Start and end dates for section 52467: 6/18 7/26

**REAL ESTATE**

**R.E. 100 REAL ESTATE PRINCIPLES (CSU)**  
*Evening Course*  
 50730 R.E. 100 J8 TTh 6:30-9:45 14-202 Gottlieb 3.0  
 Start and end dates for section 50730: 6/19-8/9

**R.E. 110 REAL ESTATE PRACTICE (CSU)**  
 54642 R.E. 110 A8 TTh 10:40-1:55 14-206 Keavney 3.0  
 Start and end dates for section 54642: 6/19-8/9

**SOCIOLOGY**

**SOCI 100 INTRODUCTION TO SOCIOLOGY (CSU, UC)**  
 50746 SOCI 100 A6 MTWTh 8:10-10:20 18-204 Crawford 3.0  
 Start and end dates for section 50746: 6/18 7/26  
 50747 SOCI 100 B6 MTWTh 10:40-12:50 10-192 Mathur 3.0  
 Start and end dates for section 50747: 6/18 7/26

*Evening Courses*  
 50748 SOCI 100 J7 MW 6:00-9:05 10-192 Mathur 3.0  
 Start and end dates for section 50748: 6/18 8/1  
 54415 SOCI 100 K7 TTh 6:00-9:50 10-192 Mathur 3.0  
 Start and end dates for section 54415: 6/19 8/2

*Evening Off-Campus Course*  
 53613 SOCI 100 L8H TTh 5:30-8:45 MK Crawford 3.0  
 Start and end dates for section 53613: 6/19 8/9  
 NOTE: This course meets at the Martin Luther King Center, 725 Monte Diablo Avenue, San Mateo.

**SPANISH**

**SPAN 111 ELEMENTARY SPANISH I (CSU, UC)**  
 51554 SPAN 111 B6 MTWTh 10:40-12:50 18-203 Hidalgo De Keck 3.0  
 TBA Hours: MTWTh 2.8 Hrs/Wk 18-112  
 Start and end dates for section 51554: 6/18 7/26

*Evening Course*  
 50754 SPAN 111 J8 TTh 6:00-9:15 18-203 Collis 3.0  
 TBA Hours: TTh 2.0 Hrs/Wk 18-112  
 Start and end dates for section 50754: 6/19 8/9

*Looking for College Forms?*

**Commonly requested forms, such as:**

- Transcript Evaluation/Course Substitution
- Residency Reclassification
- Prerequisite Equivalency
- And many more

**Can be found at**

**[collegeofsanmateo.edu/forms](http://collegeofsanmateo.edu/forms)**

*Now Open!*

**CSM LEARNING CENTER**

*Your on-campus community for academic support!*

*Offering:*

- Peer Tutoring Program: Free tutoring available in many subjects
- Communication Studies Resource Center: State-of-the-art video and computer equipment
- Computer Labs: Mac and PC featuring Adobe Creative Suite and other educational software
- Student Success Workshops
- Peer Mentors
- Group Study Rooms
- Financial Aid Information
- Learning Resources



College Center, Room 220 • (650) 574-6570 • [csmlc@smccd.edu](mailto:csmlc@smccd.edu)  
[collegeofsanmateo.edu/learningcenter](http://collegeofsanmateo.edu/learningcenter)

**The CSM Catalog is your reference document for detailed degree, course, or college information**

**Please visit [collegeofsanmateo.edu/catalog](http://collegeofsanmateo.edu/catalog) to view or download the CSM Catalog**

## College Policies

There are a number of college policies that are important for students to know. These include, but are not limited to:

- Crime Awareness/Student Right To Know
- Drug-Free Campus
- Guidelines for Addressing Cheating and Plagiarism
- Sexual Assault
- Sexual Harassment
- Smoking
- Student Conduct and Disciplinary Actions
- Student Grievances and Appeals
- Student Rights and Nondiscrimination
- Privacy Rights

For specific information about each of these policies, including appropriate staff to contact for further information or assistance, please refer to the CSM Catalog, which is available on the CSM website at [collegeofsanmateo.edu/catalog](http://collegeofsanmateo.edu/catalog).

## Fees

**Fees are due and payable at the time of registration. Students will not be able to register for classes if they have any outstanding balance. On Wednesday, May 16, 2012, students who have any outstanding fee balances for summer 2012 or fall 2012 will be dropped at midnight for non-payment of fees. For more important information, visit [collegeofsanmateo.edu/fees](http://collegeofsanmateo.edu/fees).**

**Student enrollment fees are set by California's legislature and governor and are subject to change at any time. It is possible that your fees may be adjusted at a future date. All student records are automatically held until all outstanding debts to the District colleges have been cleared. Unpaid bills may be sent to collections.**

Students who are classified as California residents as defined in the California Education Code will be charged an enrollment fee, a health services fee and a student representation fee. An optional student body fee also will be assessed. In accordance with California law, the enrollment fees may be waived for California residents who demonstrate financial need and qualify for a Board of Governors Enrollment Fee Waiver (BOGW). Contact the College Financial Aid Office for additional information.

Students who are classified as nonresidents will be charged a tuition fee in addition to the enrollment fee, health services fee and student representation fee. International Students (F-1 Visa) are subject to a health insurance requirement and are charged tuition and capital outlay fees in addition to enrollment fees. Contact the International Student Office for details.

The student representation fee was established by student election to support student advocacy before local, state and federal offices and agencies.

In addition, students will be required to purchase textbooks and miscellaneous supplies, as well as tools and technical supplies for certain programs. In some courses students will also be required to pay a non-refundable instructional materials charge.

Fees are subject to change at any time by action of the State Legislature, Board of Governors of the California Community Colleges, or the District Board of Trustees.

Fees are due and payable at the time of registration. Students who need assistance in paying fees are encouraged to contact the Financial Aid Office (College Center, Building 10, Third Floor, 574-6146).

All student records are withheld and class registration may be restricted until all outstanding debts to the District colleges have been cleared.

### AB 540 Students

Under Assembly Bill 540 (AB540), you may be exempt from paying non-resident tuition. Students who have attended a California high school for three years AND received a California high school diploma or its equivalent, such as a GED or passed the high school proficiency exam, are exempt from paying non-resident tuition. See page 4 for more information.

## Support Services & Special Programs

CSM offers a variety of student services to assist you in reaching your educational goals. These programs include:

- Admissions & Records
- CalWORKS
- Career Services
- Child Development Center
- Counseling Services
- Disabled Students Programs & Services (DSPS)
- Extended Opportunity Programs & Services (EOPS)
- Financial Aid
- Health Services Center
- High School Enrollment Programs
- International Students Program
- Learning Center
- Middle College
- Multicultural Center
- Priority Enrollment Program (PEP)
- Placement Testing
- Psychological Services
- Scholarships
- Student Life
- Transfer Services
- Veterans' Services

For specific information about each of these programs, their locations and hours of operation, please visit our Student Services webpage at [collegeofsanmateo.edu/student-services](http://collegeofsanmateo.edu/student-services). The CSM Catalog, available online also provides detailed information about each of these programs.

## NEED TO REPEAT A CLASS?

### New Enrollment Limitation on Course Repetition

#### Enrollment Limitations For Courses Not Designated As Repeatable

Beginning Summer 2012, a student may attempt a course designated as non-repeatable for a maximum of three times. Furthermore, all prior course attempts in a student's academic record count toward the limit. A "course attempt" occurs when a student receives an evaluative or non-evaluative grade or symbol such as an A, B, C, D, F, W, P, NP, C, NC, or I. As a result of this new enrollment limitation, students' decisions to repeat or withdraw from courses may have serious implications and affect their educational planning.

One additional enrollment may be considered for approval under the following circumstances:

1. **Recency:** A student may enroll one additional time if he/she successfully completed the course and a significant lapse of time of at least three years had occurred and the enrollment is for the purpose of establishing content recency only and is not for the purpose of improving an established grade. If approved, the units and grade of the most recent attempt are not part of the student's grade point average or cumulative units.
2. **Extenuating circumstances:** A student may enroll for one additional attempt only if documentable extenuating circumstances exist that match the dates of the course. Examples of extenuating circumstances are fire, flood, accident, or other extraordinary documentable conditions beyond the student's control.

#### Repetition For The Purpose Of Grade Improvement For A Course Not Designated As Repeatable

A student who has received a grade of D, F, N/P, or N/C in a non-repeatable course taken in the San Mateo County Community College District may attempt the course up to two additional times for the purpose of grade alleviation and improvement. The enrollment limitation of not more than three attempts as noted above is applicable.

#### Courses Designated As Repeatable

The Board of Trustees of San Mateo County Community College District has adopted a policy which permits a student to repeat certain courses and subjects. In these cases, a student may attempt the course/subject the maximum number of times or for the maximum number of units, as noted in the course description found in the College Catalog. For courses designated as repeatable, the number of approved attempts also represents the enrollment limitation for the course.

Fee Type	Amount	Required of
Enrollment Fee	\$46 per unit	All students except high school students enrolling for less than 11.5 units through the Concurrent Enrollment Program or Middle College High School Program
Health Services Fee*	\$15 Summer \$18 Fall \$18 Spring	All students except those enrolled ONLY in off-campus classes, Saturday classes, distance learning courses, or the Concurrent Enrollment Program
Student Representation Fee**	\$1	All students except High School students enrolled in the Concurrent Enrollment Program or Middle College High School Program
Nonresident Tuition Fee	\$203 per unit (plus \$46 per unit Enrollment Fee)	Nonresidents of California who are residents of other states
Nonresident Student Capital Outlay Fee	\$9 per unit	Nonresidents of California who are residents of other states
International Students Application Fee	\$50	Effective March 1, 2012. For Fall and Spring semesters only.
International Student Tuition Fee	\$203 per unit (plus \$46 per unit Enrollment Fee)	International students
International Student Capital Outlay Fee	\$9 per unit	International students
International Student (F-1 Visa) Health Insurance <a href="http://www.studentinsuranceusa.com">www.studentinsuranceusa.com</a>	\$159 Summer \$397.50 Fall or Spring \$953 Full Year	All F-1 Visa international students who do not present proof that they have the required level of private health insurance
Student Body Fee***	\$8 Fall \$8 Spring	Students who purchase a photo ID student body card receive discounts throughout the year and also support many student-sponsored activities and programs. (The student body fee is automatically assessed as part of your total fees; if you choose not to pay this fee, visit the Student Life and Leadership Development Office, Building 17, Room 112, before eligibility for credit & refund deadline. Check course in WebSMART.)
Parking Fee***	\$20 Summer \$40 Fall \$40 Spring \$2 per day \$70 Two-Term (Fall/Spring)	Persons who park motor vehicles on campus. (Daily permits may be purchased for \$2 from ticket dispensers in designated areas)  The parking fee is optional and not transferable to other students; disabled parking permits are issued only by the Disabilities Resource Center - See Parking Regulations on next page.
Audit Fee	\$15 per unit (students enrolling in a variable unit course must pay for maximum units)	Students enrolled in 10 or more units for credit can audit up to three additional units free of charge - See Auditing policy in the CSM Catalog.
Duplicate Diploma Fee	\$20	
Returned Check Fee	\$20	Students whose personal checks are returned by the bank (Only cash, credit card or cashier's check will be honored to clear a returned check - Bookstore fee may differ)
Transcript Fee	\$5 official \$10 additional for rush service	Students requesting a transcript of their academic record at College of San Mateo, Cañada College and/or Skyline College (The first two transcripts ever requested are free)

\* Students who depend exclusively upon prayer for healing in accordance with the teachings of a bona fide religious sect, denomination, or organization may be exempted from paying the health services fee. For details, contact the Health Center, Building 1, Room 147.

\*\* A student has the right to refuse to pay the \$1 student representation fee for religious, political, moral or financial reasons. This refusal must be submitted in writing to the Student Life and Leadership Development Office, Building 17, Room 112 before eligibility for credit & refund deadline. Check course in WebSMART.

\*\*\* This fee is optional. Please refer to "Required Of" column for further information. A two-term parking permit is available for \$70. Parking permits for low income students are \$20 per semester; low income students are those who demonstrate financial need under federal or state standards. For lost or stolen permits, please see Parking Regulations on next page.





Residential Customer Local  
Carrier Route Pre-Sort

# Make summer work for you!

*Whether you are home from college for the summer or a high school student, you can accelerate your college education by taking a summer class at CSM.*

College of San Mateo's summer session provides you the opportunity to get ahead on lower-division graduation requirements. If you attend a CSU or a UC campus you can verify equivalency of a CSM course with a specific course at your college by visiting [www.assist.org](http://www.assist.org). If you attend an out-of-state or private institution, check with your college first to verify that it will accept the CSM course you intend to take.

If you're a high school student preparing for college in the fall, summer session provides you a chance to get a 'head start' on your college education. We offer a full range of courses this summer which can be found in this schedule.

We encourage you to enroll at CSM and make this summer work for you.

Visit [collegeofsanmateo.edu/enroll](http://collegeofsanmateo.edu/enroll)  
to get started now!



**Board of Trustees  
San Mateo County  
Community College District**

Dave Mandelkern, President  
Helen Hausman, Vice President-Clerk  
Richard Holober  
Patricia Miljanich  
Karen Schwarz  
Patiane Gladstone, Student Trustee 2011/12  
Ron Galatolo, District Chancellor

**Accuracy Statement**

College of San Mateo and the San Mateo County Community College District have made every reasonable effort to determine that everything stated in this schedule is accurate. Courses and programs offered, together with other information contained herein, are subject to change without notice by the administration of College of San Mateo for reasons related to student enrollment or level of financial support, or for any other reason, at the discretion of the College. The College and the District further reserve the right to add, amend or repeal any of their rules, regulations, policies and procedures, in conformance with applicable laws.

**Use of Photography**

College of San Mateo, a non-profit California Community College, reserves the right to take and use photographs, video and electronic images of students and visitors taken on college property and at college-sponsored events for marketing and promotional purposes. Objection must be made in writing to the Community Relations & Marketing Office.

*This publication is produced by CSM's Community Relations and Marketing Department. It is available upon request in an alternate format by calling College of San Mateo's Disability Resource Center at (650) 574-6438.*