

Schedule of Classes

CSM in Your Community: Family Science & Astronomy Festival



SPRING 2014

Inside this Issue

Student Success Story	1
CSM's Science Programs	1
President's Message.	2
Spring 2014 Important Dates	2
Registration and Enrollment	4
Steps to Successful Enrollment.	5
Financial Aid	5
Educational Goals at CSM	6
AA/AS Degrees and Certificates	6
Transfer Worksheets.	7
Schedule of Classes	8–20
Final Exam Schedule	20
Fees and Refunds	21
Policies and Programs	22
Map, Directory and Parking.	23

Semester begins January 13
collegeofsanmateo.edu

From the cosmos to tectonic plates to chemistry creations and a CSI anatomy mystery—CSM's Family Science & Astronomy Festival showcases the wonders of science in an entertaining and educational community event. Held each October, the event attracts more than 1,000 science enthusiasts of all ages to the college for a day of discovery, intrigue and fun.

The festival features a lineup of activities designed to encourage people to learn and understand the science of the world around them through hands-on workshops, lively demonstrations, entertaining shows and keynote presentations by noted scientists. Co-sponsored by CSM and the San Mateo County Astronomical Society, the event is open to the public and admission is free.

The workshops highlight many of the different sciences represented at CSM, including astronomy, geology, physics, biology, anatomy chemistry and engineering, and are presented by CSM science faculty. Examples of workshops from the 2013 program included "Whodunit? CSI at CSM," "Exploring Life on Planet Earth: A Hands-On Biology Museum," "What's on Your Tectonic Plate," "Got Physics?" (a demonstration of conservation of angular momentum), "Gravity and Black Holes," and so much more. Children and adults alike find themselves immersed in hands-on activities designed to inspire interest in science: building Galileoscopes (telescopes similar to those used by early astronomers), making comets, and constructing planispheres (maps of the night sky).

See "CSM in Your Community" on page 22

College of San Mateo

College of San Mateo



Schedule of Classes ~ Spring 2014 ~ Semester begins January 13

Alumni at a Glance

Dr. J. Craig Venter

*Entrepreneur, Genomic Researcher
College of San Mateo Alumni 1970*

J. Craig Venter, Ph.D., is regarded as one of the leading scientists of the 21st century for his numerous, invaluable contributions to genomic research. He is founder, chairman, and president of the J. Craig Venter Institute, a not-for-profit research institute, where in 1995 he and his team decoded the genome of the first free-living organism. In 1998, Dr. Venter founded Celera Genomics to sequence the human genome using new tools and techniques he and his team developed.

Dr. Venter began his formal education following a tour of duty as a Navy corpsman in Vietnam from 1967 to 1968. After attending CSM, he went on to earn a bachelor's degree in biochemistry and a Ph.D. in physiology and pharmacology from UC San Diego; he was appointed professor at the State University of New York at Buffalo and the Roswell Park Cancer Institute. As a researcher with the National Institutes of Health, he developed Expressed Sequence Tags or ESTs, a revolutionary new strategy for rapid gene discovery. Dr. Venter was the recipient of the 2008 United States National Medal of Science, in addition to numerous other scientific awards and public honors.

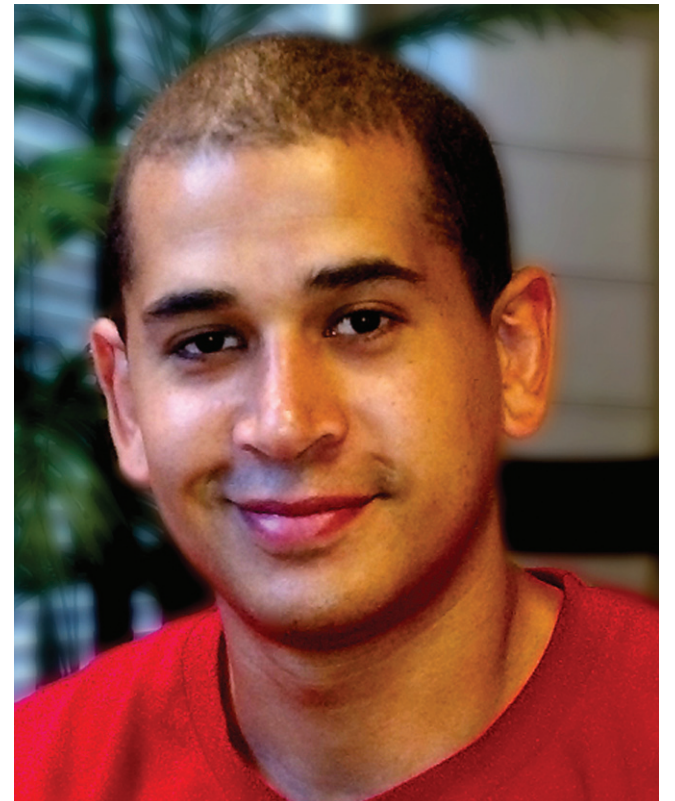
Student Success Story: Gabriel Denham

Columbia University, physics major

Gabriel Denham's journey to college was anything but traditional. After attending four different high schools, he came to the conclusion that school just wasn't for him. In his junior year, Gabriel left school, took the state proficiency exam and earned his GED. At age 17 and out of school, he never considered going to college. Instead, Gabriel spent 10 years in the workforce employed at various jobs and gaining life experience. After being sidelined from work due to illness, he reconsidered education.

"I decided to step outside my comfort zone and give college a chance," says Gabriel. "I have always liked math and when I took CSM's math placement test, I tested into calculus. In my first semester, I enrolled in 18 units, including a calculus class with Professor Rob Komar. Rob's class was a catalyst for me—it changed my life. It was the first time I realized the importance of education and could see how much fun learning could be. At that point, I decided I wanted to become a teacher. Being at CSM affected me deeply. I was thrilled to be back in school and to have finally found my place."

Despite carrying a heavy course load, Gabriel began looking for ways to get involved in college life beyond the classroom. He decided to attend an Alpha Gamma Sigma (AGS) Honor Society meeting and, shortly thereafter, he was nominated and elected to be president of AGS. Presiding over meetings of 50-60 students was a daunting prospect for Gabriel who had fear of public speaking. "But the students were counting on me so I had to push myself and eventually, I overcame my anxiety." Through his participation in AGS, Gabriel developed a social network at CSM and he also found a pathway to some wonderful opportunities.



"At CSM, I realized that the place I had avoided for so long—school—was exactly where I was supposed to be. I think there is an unfair stigma attached to attending a community college. It was easy for me to find other students who shared my motivation and ambition. Also, I was impressed that Mike Claire, the college president, made time to attend AGS events which showed that he genuinely supported us and was interested in what we were doing."

See "Student Success Story" on page 22

CSM's Science Programs: Educating Tomorrow's Scientists

"CSM's science faculty is working to educate the complete scientist," is how Dr. Charlene Frontiera, dean of CSM's Science/Math Division, describes the college's approach to science education. "That means, CSM provides students with exposure to a broad range of meaningful educational experiences that are supported by a wealth of resources."

Whether students are science majors or enrolled in science courses to fulfill general education requirements, CSM offers a full spectrum of basic science courses that students need during their first two years of college in astronomy, biological sciences, chemistry, physics, geology, meteorology, oceanography and engineering. CSM's 68,000 square foot Science Building is the hub of campus for science students. Frontiera explains, "We're so fortunate to be able to teach science in our new Science Building which is extremely well-equipped with modern lecture halls, faculty offices and state of the art lab facilities, most of which have been designed for specific science disciplines." The Science Building also houses a planetarium and observation deck as well as the Integrated Science Center, a venue which hosts club activities, provides computer access and serves as a popular study area for students.

One of the greatest resources of CSM's science program is the faculty. As Dean Frontiera points out, "Our faculty are exceptionally well-educated: many have Ph.Ds. and are diverse in their backgrounds and experiences. They are committed to providing an active learning environment tailored to the individual student, and most of all, they put students first." Student Rob Voice, who earned a BS degree in chemistry from UC Davis, returned to CSM for a career change; he offers the following perspective:



"The faculty's mastery of science and current topics is cutting edge. We receive a personalized education, there is open dialogue, and our professors are always available. They foster our curiosity and give us tools to make us the scientists we want to be."

The resources at CSM ensure that science majors are well prepared for university studies when they transfer. Frontiera explains, the department feels strongly that there is a difference between good theory and execut-

See "CSM's Science Programs" on page 3



Support CSM

Your opportunity to participate
collegeofsanmateo.edu/supportcsm



Message from the President



Welcome to College of San Mateo's spring semester. In this issue of the *Schedule of Classes*, we get a chance to feature our science programs, one of several outstanding programs at CSM. In the story, "Educating Tomorrow's Scientists," find out how CSM's science faculty prepare our students to become "complete scientists" so when they transfer to universities, they have all the tools they need to compete among the best in the class. As a parent, I can personally attest to the excellent preparation that our science transfer students receive. My daughter transferred from CSM to UCLA in 2012. She will graduate from UCLA this June with a bachelor's degree in physiology, and she was very well-prepared for the upper-division courses in her major.

To illustrate the success of our science students, we are showcasing Gabriel Denham, a CSM transfer student currently majoring in physics at Columbia University. With a belief in "paying it forward," Gabriel is taking his passion for learning, which he discovered at CSM, and pursuing a career as a university professor.

In keeping with the science theme, we have included an interview with the prolific Professor Mohsen Janatpour. I describe him as "prolific" because Professor Janatpour is involved in so many different science initiatives—all of which contribute to the quality of our science education—in addition to teaching astronomy, math and physics. His enthusiasm for teaching is infectious and his dedication to his students is impressive. I think you will enjoy getting to know him through this interview.

In addition to building a strong foundation for students pursuing careers in the sciences, we also have a strong commitment to reach out to the community with our science programs. In our standing feature, "CSM in Your Community," we highlight the college's annual Family Science & Astronomy Festival, a very popular event for science enthusiasts of all ages. The festival will return in October 2014; I invite you to attend and I think you will find it both educational and entertaining.

CSM offers much more than a comprehensive science program. I hope you look through the selection of classes that we are offering in spring and consider enrolling at CSM. With classes in 66 different areas of study, we really do offer something for everyone.

Michael Claire

Michael Claire, CSM President

About College of San Mateo



College of San Mateo is located at the northern corridor of Silicon Valley and situated on a beautiful 153-acre site in the San Mateo hills that provides a panoramic view of San Francisco Bay. Since 1922, CSM has been a gateway to higher education leading to university transfer, career preparation and advancement, and professional and personal development.

The College currently serves approximately 10,000 day, evening and weekend students. CSM students reflect the diversity of the Bay Area and have a range of educational goals. To best serve our students, the curriculum offers a wealth of programs that include traditional, semester-length and short courses in addition to distance education.

Students can experience a vibrant campus life to complement classroom learning that includes leadership development, student government, more than 20 student clubs and educational and cultural activities. CSM is proud of its championship intercollegiate athletic teams which compete at the highest community college level. Many student-athletes receive scholarships and continue at four-year institutions and numerous CSM athletes have gone on to professional careers.

To ensure student success, CSM offers a comprehensive selection of academic support services. Resources include financial aid and scholarships, counseling, transfer services, tutoring, employment assistance, health services and child care, among many others.

For more information about the college, visit collegeofsanmateo.edu/explorecsm. Guided campus tours can be scheduled through collegeofsanmateo.edu/tours.

College of San Mateo is accredited by the Accrediting Commission for Community and Junior Colleges of the Western Association of Schools and Colleges, (10 Commercial Boulevard, Suite 204, Novato, CA 94949, 415-506-0234), an institutional accrediting body recognized by the Council for Higher Education Accreditation and the U.S. Department of Education.

Community Members: Are there topics or features you'd like to see in upcoming schedules? Please provide your suggestions and/or feedback to csmpr@smccd.edu. Thank you.

Spring 2014 Important Dates

Pre-registration	Matriculation activities: Placement Testing, College Orientation, Counseling—see page 5
Monday, November 4 – Friday, November 15	WebSMART priority registration for Spring 2014 by appointment for continuing day and evening students. <i>Students who have an outstanding balance from any prior semester will not be able to register for classes until all fees are paid.</i>
Monday, November 4	EOPS, DSPS, CalWorks, Veterans, Foster Youth, current SEP* required.
Tuesday, November 5	Athletes, Honors Program Students, Associated Student Government, International Students; current SEP* required.
Wednesday, November 6	Continuing Students with current SEPs* by unit value earned, Continuing Middle College students.
Saturday, November 9	All Continuing Students
Tuesday, November 12	New matriculating students who have completed matriculation, new Middle College Students
Monday, December 2	Last day to submit CSM Scholarship Application for the 2013-14 academic year. Due by 12 pm in the Financial Aid Office, Bldg. 10, Room 360.
Saturday, November 16 – Sunday, January 12, 2014	WebSMART registration for Spring 2014 by appointment—New, former, and continuing students. Students who have an outstanding balance from any prior semester will not be able to register for classes until all fees are paid.
Monday, January 6, 2014 IMPORTANT!	Deadline to pay student fees. <i>If fees are not paid by this date, your classes will be automatically dropped.</i> Beginning Tuesday, January 7, 2014, one week prior to the start of the spring semester, students will be dropped at midnight the day following their registration for non-payment of outstanding fees.
Thursday, January 9 – Friday, January 10	Flex Days - No Classes
Monday, January 13	Day and evening classes begin
Saturday, January 18 – Sunday, January 19	Declared Recess
Monday, January 20	Holiday – Martin Luther King Day
Monday, January 27	Last day to add semester-long courses using WebSMART.
Monday, January 27	Last day to drop semester-long classes with eligibility for fee credit or partial refund. For short courses , eligibility for credit or refund is within the first 10% of class meetings. For exact deadline date, check course in WebSMART: collegeofsanmateo.edu/webSMART .
Sunday, February 2	Last day to declare Pass/No Pass option for semester-long classes with this option. For short courses , the deadline is within the first 30% of the class meetings. For exact deadline date, check course in WebSMART: collegeofsanmateo.edu/webSMART .
Sunday, February 2	Semester-long classes officially dropped on or before this date will not appear on the student's record. Short courses officially dropped within the first 30% of class meetings will not appear on the student's record. For exact deadline date, check course in WebSMART: collegeofsanmateo.edu/webSMART .
Friday, February 14	Holiday – Abraham Lincoln Day
Saturday, February 15 – Sunday, February 16	Declared Recess
Monday, February 17	Holiday – Presidents' Day
Wednesday, March 5	Flex Day - no classes
Friday, March 7	Last day to apply for Spring 2014 A.A./A.S. degree or program certificate.
Monday, March 31 – Sunday, April 6	Spring Recess
Thursday, April 24	Last day to withdraw officially from a semester-long class with assurance of a "W" grade. For short courses the withdrawal deadline is at 75% of class meetings. For exact deadline date, check course in WebSMART: collegeofsanmateo.edu/webSMART .
Saturday, May 17 – Friday, May 23	Final Examinations for day and evening classes
Friday, May 23	Commencement exercises
Friday, May 23	Day and evening classes end
Saturday, May 24 – Sunday, May 25	Declared Recess
Monday, May 26	Holiday – Memorial Day
Tuesday, June 3	Spring 2014 official grades available on WebSMART
Monday, June 16	Summer 2014 session begins

*For Student Educational Plan (SEP) assistance, contact Counseling at (650) 574-6400.

An Interview with Professor Mohsen Janatpour

Born and raised in Tehran, Iran, Professor Mohsen Janatpour came to the United States in 1963 to complete his higher education. He holds master's degrees in mathematics, physics and astronomy from San Jose State University. Prior to teaching at CSM, Professor Janatpour taught at University of Colorado at Boulder, San Jose State University and Diablo Valley College. He has been on the faculty at CSM since 1979 and he believes he holds a record of teaching the most consecutive semesters—101—at the college (that would include summer session as well as fall and spring semesters). In addition to teaching math, physics and astronomy, over the years, Professor Janatpour has taught aeronautics, chemistry and drafting, and he serves as the coordinator of CSM's astronomy program. To educate the community about science, he has been instrumental in the development of science outreach programs including CSM's Family Science & Astronomy Festival, Project Stargaze, "The Sky Tonight" planetarium shows, Jazz Under the Stars, and a monthly speaker series on astronomical topics. His interests extend beyond the physical sciences to the areas of art and philosophy. By blending the two fields, Professor Janatpour has invented a new format of composition in painting called "symvisio" based on how we perceive and react to works of art. Articles about his artwork have appeared in international papers, including *The Herald Tribune*.

What led you to teach in the community college system?

I realized that the community college was a place where I could really make an impact in the education system. I see students enter CSM who need to be encouraged and inspired, and when they transfer, they are totally directed toward what they want to do. Teaching at CSM provides a big sense of satisfaction. I consider myself a gardener of minds. I help minds grow and CSM is the garden that gives me that opportunity.

How does teaching at a community college differ from teaching at a university?

At the community college, there is far more interaction with students. Our courses are designed to get involved in the educational life of students. That's just not possible in university lower-division courses when you're teaching 400-500 students in a class. And in upper-division courses, the role of teachers is minimal. For that reason, three of my four children attended CSM. My daughter was high school valedictorian and could have gone anywhere, but chose CSM. She has since earned her doctorate and is a senior scientist at a major healthcare solutions company.

You've been teaching for nearly 40 years. How do you teach science so that students become involved and curious about science in our world?

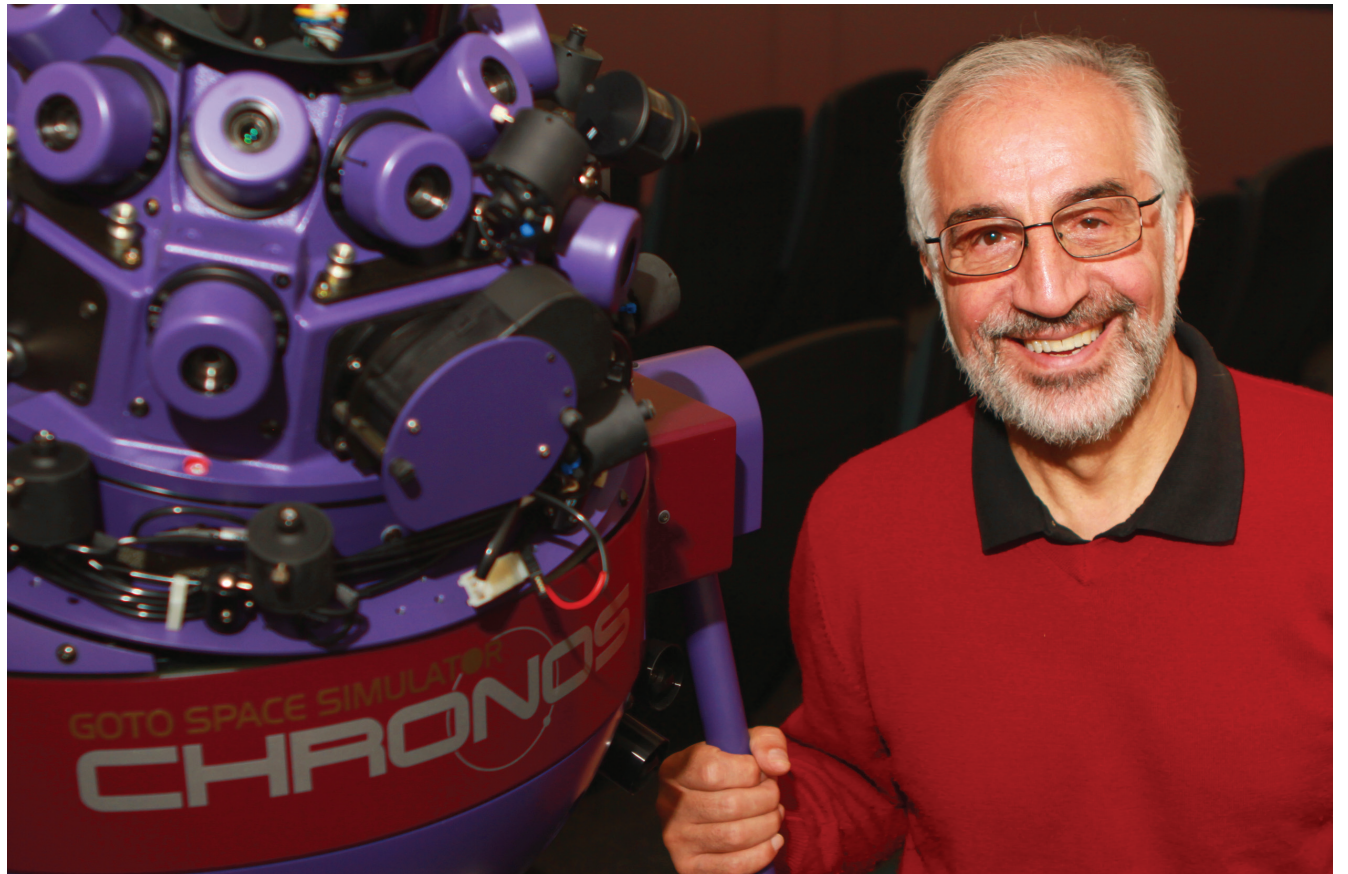
Rather than teaching science in isolation, I help my students connect science with personal interests. Many of my students are not science majors; they're taking my courses to meet general education or transfer requirements. My goal is to link science to some part of their lives so that they learn to see science differently and have a more enriched learning experience. Every

CSM's Science Programs (continued from page 1)

ing real world hands-on practice in a lab situation, and students need to acquire crossover skill sets. In the life sciences and physical sciences, there is simply no substitute for lab experience. It requires a different kind of thinking: in a lab, students apply the scientific method to achieve concrete results. At CSM, lab work cements the understanding that students receive in lecture and leads from theory to a real-world transition. According to Voice, "Labs are well-structured and well-organized to make optimum use of lab time."

Students in science labs find that laboratories are very well-furnished with special equipment and supplemental materials. For example, the Anatomy Lab houses real human cadavers, providing a literal hands-on approach to study the human body. College students don't often encounter this kind of resource until they enter graduate school. For astronomy students, the college's planetarium presents opportunities to conduct sophisticated, directed astronomical research that involves collecting data and tracking planets.

CSM's science faculty are acutely aware of the need to remain "fluent" in the latest technology and software, and in response, the department has developed a very robust Technology Committee. The committee serves as a setting for faculty to discuss strategies for using technology to enhance their teaching and strengthen student learn-



My message to the community is, "I want to awe you so that you really learn to enjoy science"

—Mohsen Janatpour

class I teach requires class projects that are designed and chosen by the students so that projects relate to their lives. For example, a student interested in dance may select a project on the physics of dance; a student who enjoys cooking can design a project that involves the physics of cooking.

What is the biggest change you have seen in teaching over the years?

First of all, teaching has changed for the better. As teachers, we have transitioned from solo lecturers in front of a class to become facilitators of student learning. Today we are more involved with our students through active learning that occurs in our classrooms. Technology has also changed our teaching. It has freed us from giving facts—students can search the Web for facts—so that we can shift our teaching to emphasize critical thinking and help students synthesize what they have learned. Students also have opportunities for greater communication with their professors through email. While email doesn't compare with one-on-one face time, it provides more access to teachers and greater flexibility for students. For me, it's very important that I answer every student email in a timely manner.

ing. As an example, faculty support the use of students using videos to rerun classroom lectures or watch video instead of reading textbooks. Science and math faculty also provide strong leadership in developing and designing courses that most effectively harness the power of online teaching.

Recognizing that science educators will be needed in future years, CSM's science department is contributing time and energy to "grow" new science teachers. CSM biology faculty are participating in CCB FEST, a grant program with San Francisco State University that provides mentoring and training for graduate students. Honoring its commitment to develop new teachers, CSM recently hired one of the graduates of the program. In another partnership program, biology and physics faculty are working with UC Berkeley on the Cal Teach Program, which involves mentoring students to become K-12 science teachers.

Frontiera says, "It's important to emphasize the investment our college district has made in science education at CSM which is illustrated by our outstanding faculty, new facilities and the latest technology. The richness of our program reflects what a community college is supposed to do: offer extraordinary programs, reach out to the community and enrich them with learning."

What do you believe makes a teacher great?

It has to do with the affective aspect of teaching and how a teacher connects with students. A teacher needs to communicate well and to empathize with students. I understand that many of my students have work responsibilities; rigid classroom rules don't always work for them and, in fact, discourage them. We as teachers also have to make personal connections with students that go beyond electronic communications such as email and online discussion boards. In addition to good communication and a sense of empathy, of course, teachers need to be experts in their subject matter.

You are an artist and have had exhibits of your work throughout the community. Does your art inform your teaching or does your teaching inform your art and how?

There is a Persian saying: How easy it is to become a man of knowledge; how hard it is to become a human being.

See "Professor Mohsen Janatpour" on page 22

Free Tax Services at College of San Mateo

These services provided by CSM students participating in ACTG 175 "Volunteer Income Tax Preparation"

Drop-in service offered:

Saturdays, February 8–March 29
(except for February 15)
9 am–1 pm • Building 14, Room 104

To qualify:

Last year's income was less than \$52,000

More info:

VITA@smccd.edu or (650) 378-7323

What to bring:

- Copy of 2012 tax return
- Social Security or ITIN card for each individual claimed on the return
- W2 and all other income forms
- Information for any tax deductions or credits including Form 1098-T
- Photo ID for taxpayer and spouse

Income under \$57,000? Want to file your own return from your own computer?
Visit www.MyFreeTaxes.com/CSM for information.

Who May Attend CSM

Any person who is a high school graduate, or who has passed the California High School Proficiency Examination or the General Education Development Examination (GED), or who is 18 years of age or older is eligible to attend this public community college. See page 5 for enrollment steps.

High school students may be admitted for concurrent enrollment with the permission of the dean of enrollment services. See College Connection Concurrent Enrollment Program on this page for details.

Open Enrollment

Every course offered at College of San Mateo (unless specifically exempted by legal statute) is open for enrollment and participation by any person who has been admitted to the College and who meets the prerequisites of the course provided that space is available.

Residency

Students who have been California residents (as defined in the Education Code) for more than one year prior to the beginning of any semester are eligible to enroll as residents for that semester. Nonresident students are those U.S. citizens who have not been residents of California (as defined in the Education Code) continuously for one year prior to the start of the semester. They are required to pay a tuition fee of \$208 per unit at the time of registration, in addition to other required fees paid by California residents. Nonresident students possessing "T" or "U" visas are exempted from paying the nonresident tuition rate. Students may be required to present documentary evidence of eligibility for classification as residents. See page 21 for Fees.

Students need not be U.S. citizens to be classified as residents. Permanent resident aliens and many other citizens of other countries are eligible to establish California residency.

Getting Started at CSM

Continuing Students Priority Registration

Priority registration gives specific groups of students the opportunity to register for classes early. Generally, groups are given priority based on maintaining current Student Educational Plans (SEPs), completing the matriculation process, and earning a total number of units with the district. See Spring 2014 Important Dates on page 2 for a breakdown of the priority registration days, dates and the groups included for each day.

A student is considered a continuing student with priority registration if the student enrolled in the Fall 2013 semester in at least one class and is either still enrolled; or dropped the class after the class session had started. In late October, students will be sent a WebSMART registration appointment email which will contain their individual appointment date. Continuing students may register and pay fees using WebSMART on or after their appointment date. **All students who have an outstanding balance from any prior semester will not be able to register for classes until all fees are paid.**

Application Process for NEW and FORMER Students

All students who have not attended any of the last three semesters, including summer session, must submit an Application for Admission for the Spring 2014 term. Submit an Application for Admission at collegeofsanmateo.edu/apply. After being admitted, and completing matriculation requirements, if applicable, new and former students may register and pay fees using WebSMART. See Spring 2014 Important Dates on page 2.

College Connection Concurrent Enrollment Program

The High School College Connection Concurrent Enrollment Program is a special program designed to provide current 9th–12th graders the opportunity to get an "early start" on their college experience and earn college credit. Enrollment fees are free to California residents who enroll in less than 11 units.

Step 1: Apply for admission online at collegeofsanmateo.edu/apply.

Step 2: Meet with your high school counselor to review and select your college courses.

Step 3: Take placement tests at CSM if you plan to register for English or math courses or a course that has an English or math prerequisite. More information can be found at collegeofsanmateo.edu/testing.

Step 4: Submit completed Course Request Form to the Admissions and Records Office at College of San Mateo, Building 10, Third Floor, by mail, in person, or by fax (650) 574-6506.

Step 5: Register for classes at collegeofsanmateo.edu/websmart.

Step 6: Sign in and use your assigned my.smccd.edu email.

For more information, visit collegeofsanmateo.edu/cc.

Priority Enrollment Program (PEP)

For Graduating High School Seniors and Other New or Returning Students

College of San Mateo offers a special enrollment program that provides priority access to matriculation services and enrollment for students who plan to enter the College in Spring 2014. More information about PEP can be found at collegeofsanmateo.edu/pep.

Transfer Students

Students who have completed lower division coursework at other colleges and universities and wish to apply that credit to the completion of a College of San Mateo certificate, associate degree, or to a California State University General Education Certification, or to an IGETC Certification should have their transcripts officially evaluated after applying for admission at collegeofsanmateo.edu/apply. For more information, review the Transcript Evaluation Service information at smccd.edu/transeval.

Dismissed Students

Students on dismissal status within the San Mateo County Community College District must go through a process to request reinstatement and permission to enroll in classes. The first step of this process at College of San Mateo is to attend a Reinstatement Workshop. To schedule a reservation for a workshop go to the Counseling Office in Building 10, Third Floor, Room 340. Students must complete the workshop and the reinstatement process prior to the registration deadline date for the term for which they request enrollment.

Students who were dismissed and who have NOT been in attendance at College of San Mateo, Cañada, or Skyline College since Spring 2013 must complete an Application for Admission prior to attending the Reinstatement Workshop.

International Students

Residents of other countries may apply for admission as F-1 Visa students through the International Student Center. Special international student applications, related forms and additional information may be obtained from the International Student Center (Building 10, Third Floor, Room 310). For office hours and more information, call +1 (650) 574-6525 or go to collegeofsanmateo.edu/international.

To be eligible for priority admission for the semesters listed below, special applications should be filed in the International Student Center by these dates:

Spring 2014 (January-May) November 15, 2013

Fall 2014 (August–December) July 15, 2014

AB 540 Students

Under Assembly Bill 540 (AB540), you may be exempt from paying non resident tuition. Students who have attended a California high school for three years AND received a California high school diploma or its equivalent, such as a GED or passing the high school proficiency exam, are exempt from paying non resident tuition. If you are qualified, please complete the AB540 form and submit it by fax (650) 574-6506, by mail, or in person to the CSM Admissions and Records Office located in College Center Building 10, Third Floor, Room 360. You may obtain the AB540 form from the CSM website at collegeofsanmateo.edu/forms, or from the Admissions and Records Office.

Have questions or need assistance?
Please visit: collegeofsanmateo.edu/askthebulldog

International Education

College of San Mateo welcomes international students, who enrich the academic, cultural, and social life of the campus by bringing a diversity of ideas and multicultural perspectives to the classroom and by providing opportunities beyond the classroom for all CSM students to engage in conversations and activities that create a broader understanding of the global community in which we all live.

College of San Mateo's International Student Center provides extensive support services for international students including an efficient admissions process, assistance with financial aid, a welcoming on-campus orientation, and ongoing counseling and advising throughout the students' enrollment at the college. Dedicated, student-centered professors, small class size, and state-of-the-art facilities create a robust instructional environment in which students grow intellectually and prepare for transfer to a four-year institution or for further training in a career. For information, contact Patricia Kwok at kwokp@smccd.edu or (650) 574-6525.

Distance Education

College of San Mateo is committed to meeting the evolving needs and expectations of its students and community through the expansion of alternative means of delivering instructional and student support services.

Distance education courses consist of online and hybrid courses. Online courses are conducted through a class website, and there are no mandatory campus meetings. Hybrid courses are conducted mostly online but do have at least one meeting on campus. Most CSM distance education courses are applicable toward associate degree credit, and many satisfy transfer course requirements. Additionally, students enrolled in distance education courses have the same access to financial aid as those enrolled in on-campus courses.

Distance education courses may not be right for all students. They give students greater freedom of scheduling, but they also require more self-discipline than on-campus courses. How well distance education courses fit into your educational and career goals depends on many factors. It is important for first-time distance education students to review the information available on the distance education website at collegeofsanmateo.edu/distanceeducation. For those students who are able to create the right environment, have the right study habits, and understand the technical and academic requirements, CSM's Distance Education courses can be as effective as on-campus courses in terms of student learning.

The Distance Education Resource Center is available to assist students and answer questions in order to ensure College of San Mateo students have a successful distance learning experience. For more information, please visit the Distance Education website at collegeofsanmateo.edu/distanceeducation or call (650) 574-6271.

Spring 2014 Registration Dates & Times

Continuing Students: November 4–15

New & Former Students: Nov. 16 – Jan. 12

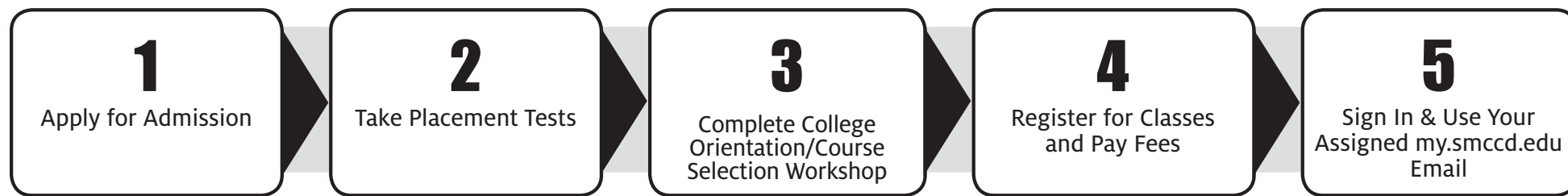
How to add classes after the semester has started

To add a class, attend the first class meeting to obtain the instructor's approval. If space is available, the instructor will give you a four-digit authorization code to enter when you register. You must complete the registration process through WebSMART no later than Monday, January 27.

For important information regarding deadlines for eligibility for credit or refund of fees please visit: collegeofsanmateo.edu/fees/credit.asp.

Online classes – You can find online instructor contact information by selecting the course title link within WebSchedule (collegeofsanmateo.edu/webschedule).

Steps to Successful Enrollment



If Your Educational Goal is to obtain an associate degree or certificate; transfer to a four-year university; improve basic skills in English, reading or math; **or** if you are applying for financial aid; **or** if you are undecided about your goal, **you must follow all steps shown above**; or if you wish to meet with a counselor you must complete Step 3, the College Orientation/Course Selection Workshop.

If Your Educational Goal is to take courses for personal enrichment; upgrade job skills; maintain a certificate or license; participate in the High School Concurrent Enrollment Program; **or** if you have already completed an associate degree or higher in the United States; **or** if you are primarily a student at another college or university and taking courses at College of San Mateo to meet the requirements of the institution, **you must follow steps 1, 4 and 5.**

Step 1: Apply for Admission

All students are required to complete the Application for Admission. Fill out the Application online at collegeofsanmateo.edu/apply.

After the application has been received, you will be sent an email confirmation with additional information. You will also receive a student identification number (which begins with a "G"). Use this number to conduct all college business and access college services.

Step 2: Take Placement Tests

Placement tests are designed to assess your skills in English or ESL, reading, and mathematics. Test results assist you to select courses, build an appropriate schedule of classes and determine whether you meet prerequisites for certain courses. View sample test questions online at collegeofsanmateo.edu/testing.

To schedule placement tests, log into your student WebSMART account. The USER ID is your G number and the password is your 6 digit birth date. Click on STUDENT RECORDS AND STUDENT APPOINTMENTS.

- You must complete the application for admission and have a student G number to schedule a testing appointment.
- You must present a photo ID and your student G number on the day of testing (no exceptions).
- There is no fee for testing and it takes approximately 2.5 hours to complete.
- The Assessment Center is located in College Center Building 10, Third Floor, Room 370.

If you have already successfully completed English and/or math courses at another college or university within the United States and are planning to enroll in an English or math course or a course that has an English or math prerequisite, then your previous coursework must be approved. Visit collegeofsanmateo.edu/prerequisites for more information and to obtain the Prerequisite Equivalency form. If you are transferring in from another college and do not plan to enroll in an English or math course or a course with an English or math prerequisite, then you may proceed to Step 3.

Step 3: Complete College Orientation/Course Selection Workshop

To have access to counseling services students must first complete the College Orientation/Course Selection Workshop. To make a reservation for a workshop log into your student WebSMART account, click on Student Records, and select Student Appointments. Bring to the workshop your placement test results. Please arrive on time, as latecomers

are asked to reschedule. At the completion of the one and a half hour workshop you will be able to register for classes and you are eligible to use counseling services.

Step 4: Register for Classes and Pay Fees

Your appointment to register will be sent to your student WebSMART account. Use your student WebSMART account to view your registration appointment, register for classes and pay fees.

Many courses with prerequisites are subject to computerized prerequisite checking. If you have completed the prerequisite course outside of the college district, go to collegeofsanmateo.edu/prerequisites for more information.

Step 5: Sign In and Use Your Assigned my.smccd.edu Email

All college electronic communications will be sent to your my.smccd.edu email address. You can expect to receive important email messages from your professors and the college before the first day of school. Log into your WebSMART student account to find your email address and password and check it regularly.

Enrollment Management

- A Student Responsibility -

As a student at College of San Mateo, it is your responsibility to manage your enrollment. This includes updating your personal information record via WebSMART, checking your student email, registering for classes in a timely manner, adhering to all deadlines listed on the Important Dates page in the beginning of this Schedule (in particular late registration, withdrawal from classes, payment of fees), and monitoring your academic standing.

Financial Aid

Students applying for Financial Aid must complete enrollment steps as noted above. All students who have completed coursework at other colleges/universities must have their transcripts officially evaluated by completing a Transcript Evaluation Request form. Visit smccd.edu/transeval.

Complete a Free Application for Federal Student Aid (FAFSA) to automatically be considered for all of the following programs:

Board of Governor's Fee Waiver (BOGFW)

The State of California offers a BOGFW for students who are residents of the State of California, attend a community college, and are eligible for need-based financial aid. The BOGFW pays enrollment fees only for the academic year when eligibility has been determined. Other fees, such as parking, health, student body and student representation, must be paid by the student (see Fees page 21).

Federal Pell Grant

You are automatically considered for a Federal Pell Grant when you file the FAFSA. If you receive an Expected Family Contribution (EFC) of 5200 or less on the Student Aid Report (SAR), you are eligible for a Federal Pell award. Less than half-time students have a much lower EFC cut-off to be eligible for a grant. Awards for students are prorated based on enrollment

status: full-time 12 or more units; half-time 6-8.5 units; three-quarter time 9-11.5 units; less than half .5-5.5 units. Awards range from: \$277-\$550.

Cal Grant A, B and C Deadline to Apply is March 2 or September 2

Cal Grants are for California residents only. They are awarded by the California Student Aid Commission for attendance in schools in California only. Maximum awards are: Cal Grant B \$1,551; Cal Grant C \$576.

Federal Supplemental Educational Opportunity Grant (FSEOG)

FSEOG is a grant awarded to students with exceptional need (EFC of 0 through 1,000). Awards range from: \$100-\$800. Priority application date: March 2. Visit www.icanaffordcollege.com

California Chafee Grant (CHAFEE)

The California Chafee Grant Program awards funds to eligible current or former foster youth for career and technical training or college courses. Eligible Chafee applicants are required to be, or to have been, in foster care between their 16th and 18th birthdays, and to not have reached the age of 22 by July 1 of the award year. Maximum annual award: \$5,000.

Extended Opportunity Programs and Services (EOPS)

EOPS is a state-funded program that provides book vouchers, grants, support services, and limited transportation services to high-need, educationally disadvantaged students who are California residents. Students must complete the FAFSA and/or a BOGFW application to apply. Students must be enrolled full-time at the time of application. Final eligibility for EOPS and CARE is determined and coordinated through the EOPS Office.

Student Employment Federal Work Study (FWS)

Students who apply for financial aid and complete the Student Information Sheet and the FAFSA by March 2 are given priority. Maximum Annual Award: up to \$6,000. Priority application date: March 2.

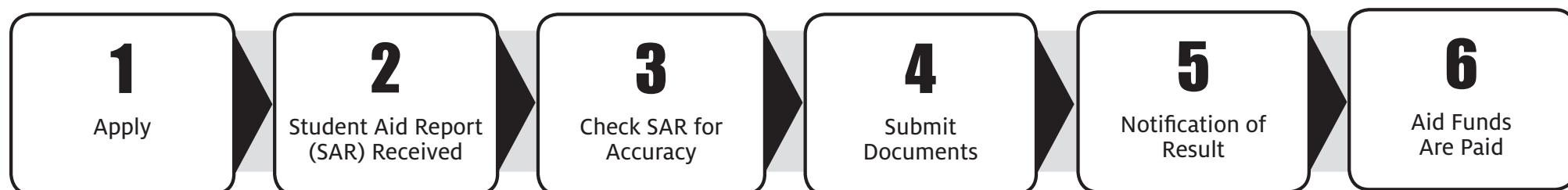
California Dream Act

The Dream Act was passed into law in 2011 and allows AB 540 students to apply for and receive several types of financial aid, including Board of Governors Fee Waiver, Cal Grants and Chafee Grants, EOPS, CARE or CalWorks and Scholarships.

Loans and Scholarships

Loans are funds that students borrow now and repay after they complete a program of study or stop going to school. Scholarships are awarded for a variety of criteria. Visit collegeofsanmateo.edu/finaid or call the Financial Aid Office at 574-6514 for more information.

Financial Aid Steps



Step 1: Apply

For 2013-14 file a 13-14 FAFSA at www.fafsa.ed.gov. College of San Mateo's college code is 001181. FILE EARLY for the upcoming year (anytime after January 1). It is also recommended that you attend a free Financial Aid workshop. Log in to WebSMART for dates and sign-up.

Step 2: Student Aid Report Received

After you apply, you'll receive a Student Aid Report (SAR). Your SAR contains the information reported on your FAFSA and usually includes your Expected Family Contribution

(EFC). The EFC, a measure of your family's financial strength, is used to determine your eligibility for federal student aid.

Step 3: Check SAR for Accuracy

Your SAR must be checked for accuracy and then brought to the Financial Aid Office for review. Please check WebSMART for any additional information required to complete your file before submitting your SAR to the office.

Step 4: Submit Documents

Submit all required documents to College of San Mateo's Financial Aid Office. File is complete!

Step 5: Notification of Result

Check WebSMART to learn the status of your financial aid. College of San Mateo will notify eligible students in WebSMART by an award letter outlining the types and amount of Financial Aid they qualify for at CSM.

Step 6: Aid Funds are Paid!

You will receive a check in the mail or if you signed up for direct deposit funds will be electronically deposited into your bank account.

Educational Goals at CSM

View the College Catalog and the College website, collegeofsanmateo.edu, for more information about goals and opportunities at College of San Mateo.

University Transfer Program

Complete your freshman and sophomore years of university work at College of San Mateo and transfer as a junior to a baccalaureate level college or university. College of San Mateo can help you plan an educational program to prepare you to transfer to the University of California, California State University or private college or university to earn a bachelor's degree. Assistance from Counseling Services and Transfer Services can ensure a smooth transition to the transfer institution of your choice. With planning, it is possible to concurrently complete an associate degree as you complete coursework to facilitate university transfer. In many cases, students planning to transfer may want to pursue an Associate Degree for Transfer (AA-T/AS-T). See information below.

Associate Degrees for Transfer (AA/AS-T) Benefit Students Intending to Transfer to CSU

California community colleges, as a result of SB 1440, offer associate degrees designed to support transfer to the California State University system. Students who complete an AA-T or AS-T secure priority admission to the California State University system. A list of associate degrees for transfer (AA-T/AS-T) is located in the CSM Catalog and on the Transfer Services website. For more information about SB 1440 and advantages to completing an AA-T or AS-T go to www.sb1440.org.

Associate in Arts and Associate in Science Degree Programs

At College of San Mateo you can select from over 65 associate degree majors, or choose to complete multiple degrees to enhance career and job opportunities or for personal enrichment. Graduation from

College of San Mateo with the associate in arts or science degree is based upon the completion of 60 units of lower-division college-level work, which includes major, basic competency, and general education requirements. For a complete list of associate degree majors and courses required to satisfy each major refer to the CSM Catalog.

Certificate Programs

You can earn a certificate in achievement or a certificate of specialization in over 70 areas. Certificate programs are designed to prepare you for employment. All certificate programs are carefully developed by advisory committees composed of college staff and selected representatives from the business and industrial communities. Typically certificates require 12–40 units of coursework and can be completed in one semester or over several semesters. Certificates are awarded upon successful completion of requirements listed in the CSM Catalog.

Gainful Employment Disclosure Information

Final regulations published in the Federal Register on October 29, 2010, [75 FR 66665 and FR 66832], by the U.S. Department of Education, require all institutions that participate in the student financial assistance programs authorized under Title IV of the Higher Education Act of 1965, to report certain information about students who enrolled in Title IV - eligible educational programs that lead to gainful employment in a recognized occupation. College of San Mateo's report on educational programs leading to gainful employment is available at collegeofsanmateo.edu/degrees.

Multiple Educational Goals

At College of San Mateo you are free to pursue your educational interests for personal and career growth and development. This may mean that you want to complete certificates, associate degrees, and transfer.

You are not limited to selecting one educational goal.*

*Students participating in the some special programs (such as the CSM Financial Aid program) are required to declare one primary educational goal.

Updating Job Skills

You may find classes and programs that appeal to you for updating your job skills or advancement in your career.

Program Planning and Enrollment Management

Students enrolling at College of San Mateo should plan a program of study that will meet their educational and career goals. Attend the College Orientation and Course Selection Workshop to acquire information about program planning and how to achieve educational goals. All students who attend a workshop have access to counseling services and should consult with a counselor early in the educational process for academic planning assistance. Students often have multiple goals and plan to complete a college certificate, an associate degree, and/or transfer to a university to complete a baccalaureate degree.

If in the course of enrollment at College of San Mateo, students find it advisable to change their program of study or educational goal, they may do so. These changes should be discussed with a counselor and students should be aware that any changes may result in extending the time necessary to fulfill the certificate or degree or transfer requirements. Ultimately, students maintain full responsibility for planning their educational programs and for their enrollment management.

Students are responsible for maintaining current and accurate information in their WebSMART accounts and updating personal contact information and educational goal information, managing registration and enrollment, retrieving grades and placement test results, and monitoring academic standing.

A.A./A.S. Degree and Certificates Offered at CSM

The A.A./A.S. Degree Requirements worksheet can be obtained from the CSM Catalog, the Counseling Center, or at collegeofsanmateo.edu/degrees/requirements.asp.

ACCOUNTING	AA/CERT
Accounting Assistant	CERT
CPA Exam Preparation: Financial Accounting & Auditing	CERT
CPA Exam Preparation: Business Environment & Regulation	CERT
Enrolled Agent Exam Preparation	CERT
Tax Preparer I	CERT
Tax Preparer II	CERT
ADMINISTRATION OF JUSTICE	AS/AS-T/CERT
Basic Police Academy	CERT
ALCOHOL AND OTHER DRUG STUDIES	AA/CERT
Co-Occurring Disorders	CERT
ARCHITECTURE	AS
ART	
Art History	AA/CERT
Fine Arts: General Studio Art	AA
Photography	AA
Studio Art	AA-T
ASTRONOMY	
Astroimaging and Observatory Operation	CERT
BIOLOGY	AS
Biotechnology	AS/CERT
General	AS
Medical	AS
Pre-Nursing	AS
BUSINESS	
Business Administration, Option 1 (non-transfer)	AA
Business Administration, Option 2 (transfer)	AA
Business Administration	AS-T
Microcomputer/Database & Spreadsheet	AA/CERT
Microcomputer/Office Assistant	AA/CERT
Office Assistant I	CERT
Office Assistant II	CERT
CHEMISTRY	AS
COMMUNICATION STUDIES	AA/AA-T/CERT
COMPUTER AND INFORMATION SCIENCE	AS
C++ Programming	CERT
CIS Network Security Support	CERT
Computer & Network Forensics	AS/CERT
Computer Science Applications & Development	AS/CERT
Computer Forensics	CERT
Internet Programming	CERT

Java Programming	CERT
Web & Mobile Application Development	AS/CERT
COSMETOLOGY	AA/CERT
DENTAL ASSISTING	AS/CERT
DIGITAL MEDIA	
Digital Audio	AA/CERT
Digital Video	CERT
Digital Video Production	AA
Graphic Design	AA/CERT
Graphic Production	CERT
Journalism	AA/CERT
Lighting	CERT
Multimedia	AA/CERT
Television & Radio Broadcasting	CERT
Television Producing	AA
Video Journalism	CERT
Web Design	AA/CERT
Web Developer	AA/CERT
DRAFTING/CAD	AS/CERT
Computer Aided Design	CERT
ELECTRICAL TECHNOLOGY	
Inside Wireman	CERT
ELECTRONICS TECHNOLOGY	
Electrical Power Systems & Instrumentation	CERT
Fundamentals of Smart Building Systems	CERT
Industrial Electronics	AS/CERT
Telecommunications Fundamentals	CERT
ENGINEERING	AS
Engineering Technology - General	AS
ENGLISH	AA/AA-T
ETHNIC STUDIES	AA
FILM	AA
FIRE TECHNOLOGY	AS/CERT
GEOLOGICAL SCIENCES	AS
Geology	AS-T
GLOBAL STUDIES	CERT
HISTORY	AA-T
INTERDISCIPLINARY STUDIES	
Contemporary Issues	AA
Intercultural Studies	AA
Science & Society	AA

Associate Degree for Transfer (AA/AS-T)

These unique associate degrees allow students to prepare for transfer and complete an associated degree that guarantees admission with junior standing to the California State University system. Though not a guarantee to all California State University campuses and all majors, it does secure priority admission consideration.

"Obtaining an Associate Degree for Transfer at College of San Mateo gives students a significant advantage in the transfer process!"

—Mike Mitchell, Transfer Services Coordinator

KINESIOLOGY	AA-T
Comprehensive Pilates Instructor	CERT
Group Fitness Instructor	CERT
Pilates Mat Instructor	CERT
Pilates Mat & Reformer Instructor	CERT
Yoga Instructor	CERT
MANAGEMENT	
Business Management	AA/CERT
Human Resources Management	CERT
Marketing Management	AA/CERT
Project Management	CERT
Retail Management	AA/CERT
MATHEMATICS	AS/AS-T
MUSIC	AA
Electronic Music	AA/CERT
NURSING	AS
PHYSICAL SCIENCE	AS
PHYSICS	AS/AS-T
PSYCHOLOGY	AA-T
REAL ESTATE	AA
SOCIAL SCIENCE	AA
SOCIOLOGY	AA-T
SPANISH	AA/CERT
SPRINKLER FITTER	AS/CERT
UNIVERSITY TRANSFER	CERT

9/24/13

District Programs Not Offered at CSM

San Mateo County Community College District also operates Cañada College in Redwood City and Skyline College in San Bruno which offer a number of special programs not available at College of San Mateo:

Cañada College
4200 Farm Hill Blvd.,
Redwood City, CA 94061
(650) 306-3100 or
(650) 364-1212

Programs
Chemical Laboratory Technology
Computer Business Office
Technology
Drama/Theater Arts
Early Childhood Education
Earth Science
English Institute

Environmental Technology
Fashion Design
Human Services
International Business
Interior Design
Medical Assisting
Paralegal
Radiologic Technology

Athletics
Men's Basketball
Men's Soccer
Women's Golf
Women's Soccer

UNIVERSITY CENTER
Bachelor degree programs in
partnership with Bay Area
universities.
(650) 306-3399

Skyline College
3300 College Drive,
San Bruno, CA 94066
(650) 738-4100 (day)
(650) 738-4251 (evening)

Programs
Arabic
Asian Studies
Chinese Studies
Automotive Technology
Biotechnology
Central Service/Sterile
Processing
Early Childhood Education
Earth Science

Environmental Science and
Technology
Esthetician (Eve. & Sat.)
Family and Consumer Sciences
Fashion Merchandising
Filipino
Image Consulting
International Logistics
International Studies
International Trade
Medical Assistant
Medical Billing and Coding
Paralegal
Respiratory Therapy
Solar Energy Technology

Solar Installation
Surgical Technology
Telecommunications and
Network Information
Technology
Athletics
Men's Basketball
Men's Soccer
Men's Wrestling
Women's Badminton
Women's Soccer
Women's Volleyball

EDUCATIONAL GOALS: TRANSFER WORKSHEETS

COLLEGE OF SAN MATEO CALIFORNIA STATE UNIVERSITY GENERAL EDUCATION 2013-14

Name: _____ Last name _____ First name _____ CSM ID#: G _____
 Major: _____ Transfer destination: _____ CSU GE _____ CSU GE partial _____ CSU AH&I met _____

To apply AP, IB, or CLEP Exam Results to CSU GE use the charts in the CSM Catalog. C = Completed; IP = In Progress
 Use www.assist.org for an accurate list of CSU GE courses and to find lower division major course requirements for transfer.
 If you have completed coursework outside of the San Mateo County Community College District submit a Transcript Evaluation Request (www.smccd.edu/transfer) to determine if any of the coursework can be applied to CSU GE certification. Be advised that there are instances where a course at CSM is approved for CSU GE and the same course at Skyline or Canada is NOT approved for CSU GE (or visa versa). Look at the CSU GE list for the college at which you are enrolled in the class to confirm CSU GE applicability!

Area	Units	C	IP
AREA A: COMMUNICATION SKILLS & CRITICAL THINKING	9 units		
One course required from each subsection. Grades of "C" or better required in Area A coursework			
A1 Oral Communication COMM 110, 130, 140, 150 Course from other college _____	A1		
A2 Written Communication ENGL 100, 110 AP Score of 3, 4 or 5 in ENGL/LANG or ENGL/LIT	A2		
Course from other college _____ AP _____			
A3 Critical Thinking ENGL 110, 165 PHIL 103 Course from other college _____	A3		
AREA B: NATURAL SCIENCE & MATHEMATICS	10 units		
One course each from Physical Science, Life Science, and Math Concepts. At least one of the science courses must include a lab as part of the course or as a separate lab section as identified by *			
B1 Physical Science ASTR 100, 101*, 103*, 115, 125, 200 CHEM 210*, 220*, 231*, 232*, 250*, 410*, 420*, GEOG 100 GEOL 100, 101* OCEAN 100, 101* PALN 110, 111* PHYS 100, 210*, 220*, 250*, 260*, 270* AP Score of 3, 4 or 5 in CHEM or ENV SCI or PHYSICS These AP s meet B1 and B3 Course from other college _____ AP/IB/CLEP _____	B1		
B2 Life Science BIOL 100, 102, 110*, 130, 145, 184, 195*, 210*, 220*, 230*, 240*, 250*, 260*, 270*, 275 OCEAN 100, 101* PALN 110, 111* PSYC 105, 220 AP Score of 3, 4 or 5 in BIOLOGY - meets B2 and B3 Course from other college _____ AP/IB/CLEP _____	B2		
B3 Lab Courses identified by * AP Score of 3, 4 or 5 in BIO or CHEM or ENV SCI or PHYSICS Course from other college _____	B3		
B4 Math Concepts CIS 278 MATH 125, 130, 145, 200, 222, 241, 242, 251, 252, 253, 268, 270, 275 PSYC 121 AP Score of 3, 4 or 5 in CALC AB or CALC BC or STATISTICS (Grade of "C" or better in B4) Course from other college _____ AP/IB/CLEP _____	B4		
AREA C: ARTS, LITERATURE, PHILOSOPHY & LANGUAGES	9 units		
Choose at least one course from the Arts and at least one course from the Humanities; courses must be from at least two disciplines:			
C1 Arts ARCH 100 ART 101, 102, 103, 104, 124, 207, 350, 351 DANC 100 DGME 215 ETHN 288, 585 FILM 100, 120, 121, 200, 215 MUS. 100, 131, 202, 250, 275 AP Score of 3, 4 or 5 in ART HIST or MUST Course from other college _____ AP/IB _____	C1		
C2 Humanities ANTH 180 CHIN 111, 112, 121, 122, 131, 132 COMM 170, 171 ENGL 110, 161, 162, 163 ETHN 265, 440 FILM 153, 277 HIST 100, 101, 102, 201, 202, 260, 310 LT. 101, 105, 113, 115, 151, 201, 202, 220, 231, 232, 277, 430 PHIL 100, 244, 300 SPAN 110, 111, 112, 120, 121, 122, 131, 132, 140 AP Score of 3, 4 or 5 in ART HIST or HIST or FOREIGN LANG. Course from other college _____ AP/IB/CLEP _____	C1 OR C2		
AREA D: SOCIAL, POLITICAL & ECONOMIC INSTITUTIONS	9 units		
Three courses selected from at least two disciplines			
D ADMJ 100 ANTH 110, 180, 370 BUS. 125 COMM 130 DGME 100, 102 ECON 100, 102 ETHN 101, 102, 300, 440 GEOG 110, 150 HIST 100, 101, 102, 201, 202, 260, 310, 315 PLSC 100, 110, 130, 150, 200, 210, 215, 310 PSYC 100, 105, 110, 120, 200, 201, 220, 225, 300, PSYC 410 SOCI 100, 105, 110, 121, 141, 340 or AP Score of 3, 4 or 5 in ECON or GOV or HIST or GEOG or PSYC Course from other college _____ AP /IB/CLEP _____	D		
SEE U.S. HISTORY, U.S. CONSTITUTION, CALIFORNIA STATE AND LOCAL GOVERNMENT INFORMATION BELOW			
AREA E: LIFELONG UNDERSTANDING & SELF DEVELOPMENT	3 units		
3 units may be from E1 or a maximum of 1 unit may be selected from E2. CSU EXEC ORDER 1036: VETERANS who present to CSM Admissions and Records Office a DD 214 that lists at least one year active duty & honorable discharge can apply ACE military training to meet CSU GE Area E.			
E1 CRER 120, 121 HSCI 100, 112 KINE 101, 200 PSYC 100, 110, 201, 300 SOCI 110, 340 Course from other college _____	E1		
E2 ADAP 100, 110, 140, 155 AQUA 109, 1-109, 4, 127, 1-127, 4, 133, 1-133, 4, 135, 1-135, 4, 136, 1-136, 4, 137, 1-137, 4, 138, 1-138, 4, 139, 1-139, 4, 140, 1-140, 4, 151, 1-151, 4, 152, 151, 390, FITN 112, 1-112, 4, 116, 1-116, 4, 134, 201, 202, 206, 225, 226, 227, 235, 1-235, 4, 237, 301, 1-301, 4, 334, 1-334, 4, 335, 1-335, 4, 339 INDV 121, 1-121, 4, 251, 1-251, 4, TEAM 105, 111, 1-111, 4, 119, 148, 1-148, 4, 158 VARS 100, 105, 130, 133, 134, 160, 172, 185, 300, 320, 400 Course from other college _____	E2		

U.S. HISTORY, U.S. CONSTITUTION, CALIFORNIA STATE AND LOCAL GOVERNMENT – CSU GRADUATION REQUIREMENTS
 Although not a transfer requirement, the CSU system requires coursework in U.S. History, U.S. Government, California State and Local Government for their bachelor degrees.
 The courses below meet CSU graduation requirements and may also be applied to satisfy CSU GE Area D or Area C2 at all CSU campuses if the CSU GE is certified.
 Choose one course per area:
 Area 1: US HISTORY HIST 102, 201#, 202, 260
 Area 2: US CONSTITUTION HIST 201#, PLSC 200**, 210**, 215
 Area 3: CA STATE & LOCAL GOVERNMENT ETHN 101, 102 HIST 310 PLSC 200**, 210**, 310
 # meets Area 1 & Area 2
 ** meets Area 2 & Area 3
 6/27/2013

UC/CSU INTERSEGMENTAL GENERAL EDUCATION TRANSFER CURRICULUM (IGETC) 2013-14

Name: _____ Last name _____ First name _____ CSM ID#: G _____
 Major: _____ Transfer destination: _____ IGETC for UC _____ IGETC for UC partial _____ IGETC for CSU _____ IGETC for CSU partial _____ CSU AH&I met _____

Use AP & IB charts in this Catalog to view how to apply exam results to IGETC. C = Completed; IP = In Progress
 Use www.assist.org for the most accurate list of approved IGETC courses and lower division major requirements for transfer.
 If you have completed coursework outside of the San Mateo County Community College District submit a Transcript Evaluation Request (www.smccd.edu/transfer) to determine if any of the coursework can be applied to IGETC certification. Be advised there are instances when a course at CSM is approved for IGETC but the same course at Skyline or Canada is not approved for IGETC (or visa versa). Look at the approved IGETC list for the college at which you are enrolled in the class to confirm IGETC applicability.

Area	Units	C	IP
AREA 1: ENGLISH COMMUNICATION	6 - 9 units		
CSU – Three courses required, one from each group below UC – Two courses required, one from Group A & B			
A: English Composition ENGL 100 AP Score of 3, 4 or 5 in ENGL/LANG or ENGL/LIT	1A		
Course from other college _____ AP _____			
B: Critical Thinking-English Composition ENGL 110, 165	1B		
Course from other college _____			
C: Oral Communication (CSU requirement only) COMM 110, 130, 140, 150	1C		
Course from other college _____			
AREA 2: MATHEMATICAL CONCEPTS & QUANTITATIVE REASONING	3 units		
MATH 125, 145, 200, 222, 241, 242, 251, 252, 253, 268, 270, 275 PSYCH 121 AP Score of 3, 4 or 5 in CALC AB or CALC BC or STATS Course from other college _____ AP/IB _____			
AREA 3: ARTS & HUMANITIES	9 units		
Three courses with at least one from the Arts and one from the Humanities			
A: Arts ARCH 100 ART 101, 102, 103, 104, 124 DANC 100 DGME 215 ETHN 288, 585 FILM 100, 120, 121, 200, 215 MUS. 100, 131, 202, 250, 275 AP Score of 3, 4 or 5 in ART HIST Course from other college _____ AP/IB _____	3A OR 3B		
B: Humanities CHIN 131, 132 ENGL 110 ETHN 265, 440 FILM 277 HIST 100, 101, 102, 201, 202, 260, 310 LT. 101, 105, 113, 115, 151, 201, 202, 220, 231, 232, 277, 430 PHIL 100, 244, 300 SPAN 131, 132, 140, AP Score of 3, 4 or 5 in ART HIST or ENGL/LIT or HIST or FOR LANG Course from other college _____ AP/IB _____	3A OR 3B		
AREA 4: SOCIAL & BEHAVIORAL SCIENCES	9 units		
Three courses selected from at least two disciplines			
A: Physical Science ASTR 100, 101*, 103*, 115, 125, 200 CHEM 210#, 220#, 231#, 232#, 250# GEOG 100 GEOL 100, 101* OCEAN 100, 101* PALN 110, 111* PHYS 100, 210#, 220#, 250#, 260#, 270# AP Score 3, 4 or 5 in CHEM or ENV SCI or PHYSICS all AP also covers Lab requirements Course from other college _____ AP/IB _____	5A		
B: Biological Science BIOL 100, 102, 110#, 130, 145, 184, 195*, 210#, 220#, 230#, 240#, 250#, 260# PALN 110, 111* PSYC 220 AP Score of 3, 4 or 5 in BIOL and covers Lab requirements Course from other college _____ AP/IB _____	5B		
C: Science Laboratory Courses in Group A or Group B with a " * " indicates a "lab only" course. "Lab only" courses must be accompanied by the same subject lecture course. Any Course in Group A or Group B with a " # " indicates the course incorporates both lecture and lab requirements. Course from other college _____ AP/IB _____	5C		
AREA 6: LANGUAGE OTHER THAN ENGLISH	(UC requirement only) 6A		
View the college catalog for a complete list of options to satisfy Area 6. Any course from the list below satisfies Area 6. If your native language is not English, courses in your native language may not be accepted by the UC system. This requirement may be satisfied by successful completion of two years of high school study in the same language. High school transcripts required. Completed at high school AP results of 3, 4 or 5 in any FOR LANG, CHIN 122, 131, 132, 140 SPAN 120, 122, 131, 132, 140 Course from other college _____ AP/IB _____			

NOT PART OF IGETC - CSU GRADUATION REQUIREMENTS
 Although not required for transfer, the CSU system requires for graduation courses in U.S. History and American Ideals, US Constitution, and California State and Local Government. (For UC, this requirement is typically completed in high school.) For CSU you may choose one course per area below. Courses used to satisfy this CSU graduation requirement may also be applied to IGETC Area 3B or Area 4 requirements as noted above.
 Area 1: US HISTORY HIST 102, 201#, 202, 260
 Area 2: US CONSTITUTION HIST 201#, PLSC 200**, 210**, 215
 Area 3: CA STATE & LOCAL GOVERNMENT ETHN 101, 102 HIST 310 PLSC 200**, 210**, 310
 # meets Area 1 & Area 2
 ** meets Area 2 & Area 3
 6/27/2013

DGME 240 DIGITAL PUBLISHING (CSU)

A \$20.00 materials fee is payable upon registration.
43020 DGME 240 AA MW 11:10-12:30 10-163 Appel 4.0
MW 12:40-2:00 10-163

DGME 250 DIGITAL MEDIA PRACTICUM (CSU)

A \$20.00 materials fee is payable upon registration.
43428 DGME 250 AA MW 2:10-3:25 10-163 Appel 3.0
Wed 3:30-4:20 10-163

DGME 251 GRAPHIC DESIGN PRACTICUM (CSU)

A \$20.00 materials fee is payable upon registration.
44534 DGME 251 AA MW 2:10-3:25 10-163 Appel 3.0
Wed 3:30-4:20 10-163

DGME 255 PORTFOLIO (CSU)

A \$20.00 materials fee is payable upon registration.
43021 DGME 255 AA Tue 11:10-12:00 10-182 Steenberg 2.0
Tue 12:10-1:00 10-182
Thu 11:10-1:00 10-182

DGME 256 PORTFOLIO FOR GRAPHIC DESIGN (CSU)

A \$20.00 materials fee is payable upon registration.
44535 DGME 256 AA Tue 11:10-12:00 10-182 Steenberg 2.0
Tue 12:10-1:00 10-182
Thu 12:10-1:00 10-182

DGME 690 SPECIAL PROJECTS (CSU)

Requires approval of Division Dean.
43190 DGME 690 BB By Arr 2.0 Hrs/Wk 10-413 Henson 2.0
43191 DGME 690 CC By Arr 3.0 Hrs/Wk 10-413 Henson 3.0
43198 DGME 690 AA By Arr 1.0 Hr/Wk 10-413 Henson 1.0

DRAFTING TECHNOLOGY

DRAF 110 SOLIDWORKS I (CSU)

A \$5.00 materials fee is payable upon registration.
Evening Course
42415 DRAF 110 JA TTh 6:00-8:40 19-110 Vorobey 3.0

DRAF 111 SOLIDWORKS II (CSU)

A \$5.00 materials fee is payable upon registration.
Evening Course
43444 DRAF 111 JA TTh 6:00-8:40 19-110 Vorobey 3.0

DRAF 113 REVIT (CSU)

A \$5.00 materials fee is payable upon registration.
Evening Course
44491 DRAF 113 JA MW 6:00-9:00 19-110 Vorobey 3.0

DRAF 121 COMPUTER-AIDED DRAFTING I (CSU, UC)

A \$5.00 materials fee is payable upon registration.
32059 DRAF 121 AA TTh 3:00-5:50 19-110 Vorobey 3.0

DRAF 122 COMPUTER-AIDED DRAFTING II (CSU)

A \$5.00 materials fee is payable upon registration.
35033 DRAF 122 JA TTh 6:00-8:40 19-104 Payne 3.0

DRAF 690 SPECIAL PROJECTS (CSU)

Requires approval of Division Dean.
34000 DRAF 690 AA By Arr 1.0 Hr/Wk 19-113 Ross 1.0
42916 DRAF 690 BB By Arr 2.0 Hrs/Wk 19-113 Ross 2.0
34001 DRAF 690 CC By Arr 3.0 Hrs/Wk 19-113 Ross 3.0

ECONOMICS

ECON 100 PRINCIPLES OF MACROECONOMICS (CSU, UC)

32069 ECON 100 AA MWF 11:10-12:00 14-117 Lehigh 3.0
32070 ECON 100 AB MWF 9:10-10:00 14-117 Lehigh 3.0
32071 ECON 100 AC TTh 9:45-11:00 14-102 Roghani 3.0
41965 ECON 100 AE MWF 10:10-11:00 14-117 Lehigh 3.0
Evening Course
33557 ECON 100 JB Tue 6:00-9:00 14-117 Roghani 3.0

ECON 102 PRINCIPLES OF MICROECONOMICS (CSU, UC)

35469 ECON 102 AA TTh 9:45-11:00 14-117 Lehigh 3.0
32075 ECON 102 AC MWF 8:10-9:00 14-117 Shokouhbaksh 3.0
32076 ECON 102 AB TTh 8:10-9:25 14-117 Roghani 3.0
39178 ECON 102 AD MWF 9:10-10:00 14-102 Leroi 3.0
43152 ECON 102 AE TTh 11:10-12:25 14-117 Lehigh 3.0
Evening Course
32079 ECON 102 JB Wed 6:30-9:35 14-102 Shokouhbaksh 3.0

ECON 690 SPECIAL PROJECTS (CSU)

Requires approval of Division Dean.
32081 ECON 690 AA By Arr 2.0 Hrs/Wk 10-413 Henson 2.0
32082 ECON 690 BB By Arr 1.0 Hr/Wk 10-413 Henson 1.0
42826 ECON 690 CC By Arr 3.0 Hrs/Wk 10-413 Henson 3.0

ELECTRONICS TECHNOLOGY

ELEC 111 INTRODUCTION TO ELECTRONICS FUNDAMENTALS (CSU)

A \$22.00 materials fee is payable upon registration.
43038 ELEC 111 AA Mon 11:10-1:15 19-100 Gonzales 3.0
Wed 11:25-2:10 19-10
Evening Course
43040 ELEC 111 JA Mon 8:10-10:00 19-100 Staff 3.0
Wed 7:00-9:50 19-24

ELEC 112 ADVANCED ELECTRONICS APPLICATIONS (CSU)

An \$8.00 materials fee is payable upon registration.
Evening Course
43044 ELEC 112 JA Tue 8:00-9:50 19-100 Gonzales 3.0
Thu 7:00-9:50 19-24

ELEC 231 BASIC APPLIED ELECTRONIC MATHEMATICS (CSU)

42682 ELEC 231 AB Mon 9:10-11:00 19-100 Gonzales 2.0
Evening Course
42680 ELEC 231 JA Mon 6:00-8:05 19-100 Gonzales 2.0

ELEC 232 ADVANCED ELECTRONICS MATHEMATICS (CSU)

Evening Course
33628 ELEC 232 JA Mon 6:00-6:50 19-103 Staff 1.0

ELEC 405 TRANSFORMERS & ROTATING MACHINERY (CSU)

Evening Course
43049 ELEC 405 J2 Mon 7:10-10:00 19-121 Staff 2.0
Wed 7:00-9:50 19-10
Start and end dates for section 43049: 3/19 5/21

ELEC 441 SENSORS AND DATA TRANSMISSION SYSTEMS (CSU)

A \$20.00 materials fee is payable upon registration.
Evening Course
41215 ELEC 441 JA Tue 6:30-9:20 19-121 Brixen 4.0
Thu 6:00-8:25 19-10

ELEC 690 SPECIAL PROJECTS (CSU)

33895 ELEC 690 AA By Arr 1.0 Hr/Wk 19-113 Ross 1.0
33931 ELEC 690 BB By Arr 2.0 Hrs/Wk 19-113 Ross 2.0
43209 ELEC 690 CC By Arr 3.0 Hrs/Wk 19-113 Ross 3.0

ENGINEERING

ENGR 210 ENGINEERING GRAPHICS (CSU, UC)

41856 ENGR 210 AA TTh 11:10-12:25 19-103 Demsetz 4.0
TTh 12:35-1:50 19-124
TBA Hours: By Arr 2.0 Hrs/Wk 19-124

ENGR 260 CIRCUITS AND DEVICES (CSU, UC)

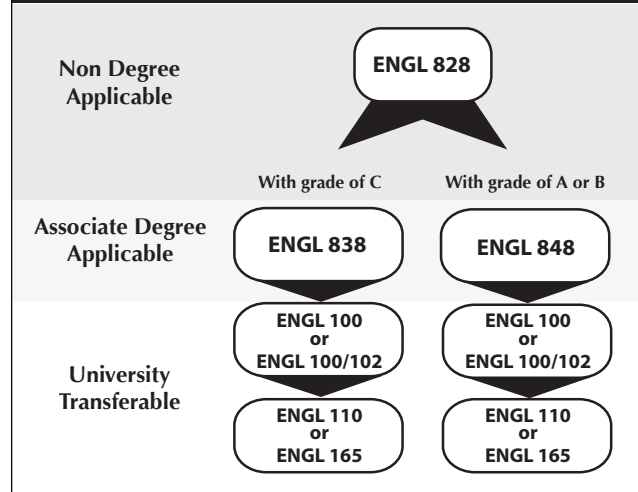
32264 ENGR 260 AA MW 12:10-1:30 19-103 Demsetz 4.0
M 1:50-4:55 19-24

ENGR 270 MATERIALS SCIENCE (CSU, UC)

Evening Course
32265 ENGR 270 JA Tue 4:10-6:00 19-103 Westmore 3.0
Thu 5:10-8:00 19-40
TBA Hours: By Arr 1.0 Hr/Wk 36-110

ENGLISH AND LITERATURE

ENGLISH COURSE SEQUENCE



ENGL 100 COMPOSITION AND READING (CSU, UC) (C-ID ENGL 100)

32125 ENGL 100 AA MWF 8:10-9:00 16-201 Newman 3.0
TBA Hours: By Arr 1.0 Hr/Wk 18-104
32151 ENGL 100 AB MWF 8:10-9:00 16-240 Mach 3.0
TBA Hours: By Arr 1.0 Hr/Wk 18-104
32127 ENGL 100 AC MWF 9:10-10:00 16-102 Sammons 3.0
TBA Hours: By Arr 1.0 Hr/Wk 18-104
32128 ENGL 100 AG TTh 8:10-9:25 16-204 Wallace 3.0
TBA Hours: By Arr 1.0 Hr/Wk 18-104
33819 ENGL 100 AK MWF 9:10-10:00 16-240 Mach 3.0
TBA Hours: By Arr 1.0 Hr/Wk 18-104
32133 ENGL 100 AM MWF 9:10-10:00 16-208 Stafford 3.0
TBA Hours: By Arr 1.0 Hr/Wk 18-104
41495 ENGL 100 AT TTh 9:45-11:00 16-201 Quinlan 3.0
TBA Hours: By Arr 1.0 Hr/Wk 18-104
43167 ENGL 100 AV TTh 9:45-11:00 16-206 Hayes 3.0
TBA Hours: By Arr 1.0 Hr/Wk 18-104
32137 ENGL 100 AY TTh 9:45-11:00 16-204 Wallace 3.0
TBA Hours: By Arr 1.0 Hr/Wk 18-104
32142 ENGL 100 BA MWF 10:10-11:00 18-204 Maxwell 3.0
TBA Hours: By Arr 1.0 Hr/Wk 18-104
32140 ENGL 100 BD MWF 10:10-11:00 16-102 Sammons 3.0
TBA Hours: By Arr 1.0 Hr/Wk 18-104

32139 ENGL 100 BG MWF 10:10-11:00 16-206 Bliss 3.0
TBA Hours: By Arr 1.0 Hr/Wk 18-104
32143 ENGL 100 BJ TTh 11:10-12:25 16-104 Scheffer 3.0
TBA Hours: By Arr 1.0 Hr/Wk 18-104
32148 ENGL 100 BK MWF 11:10-12:00 16-240 Mach 3.0
TBA Hours: By Arr 1.0 Hr/Wk 18-104
42427 ENGL 100 BL MWF 11:10-12:00 16-104 Cutler 3.0
TBA Hours: By Arr 1.0 Hr/Wk 18-104
32145 ENGL 100 BR TTh 11:10-12:25 16-101 Maxwell 3.0
TBA Hours: By Arr 1.0 Hr/Wk 18-104
32149 ENGL 100 CA MWF 12:10-1:00 16-240 Mach 3.0
TBA Hours: By Arr 1.0 Hr/Wk 18-104
43180 ENGL 100 CB MWF 12:10-1:00 16-102 Maxwell 3.0
TBA Hours: By Arr 1.0 Hr/Wk 18-104
32150 ENGL 100 CF MWF 11:10-12:00 16-206 Bliss 3.0
TBA Hours: By Arr 1.0 Hr/Wk 18-104
32134 ENGL 100 DC TTh 11:10-12:25 16-104 Garfinkle 3.0
Evening Courses
41061 ENGL 100 JB Tue 6:30-9:30 16-207 Bruni 3.0
TBA Hours: By Arr 1.0 Hr/Wk 18-104
32155 ENGL 100 JD Wed 6:30-9:35 16-104 Treanor 3.0
TBA Hours: By Arr 1.0 Hr/Wk 18-104

Online Course
32902 ENGL 100 OLH Online 4-ONLN Heyman 3.0

ENGL 100 COMPOSITION AND READING (CSU, UC) (C-ID ENGL 100) ENGL 102 ENGLISH PRACTICUM (CSU)

43635 ENGL 100 AP MWF 11:10-12:00 16-205 Kitamura 3.0
TBA Hours: By Arr 1.0 Hr/Wk 18-104
43636 ENGL 102 AP MW 12:10-1:00 16-205 Kitamura 2.0
NOTE: This group (43635 ENGL 100 AP and 43636 ENGL 102 AP) is linked with CRER 129 AA (44409) and is part of the Puente Learning Community. Students must enroll in all sections as linked.

38803 ENGL 100 FA MWF 11:10-12:00 16-102 Staff 3.0
TBA Hours: By Arr 1.0 Hr/Wk 18-104
42428 ENGL 102 FA TTh 11:10-12:00 16-102 Staff 2.0

39507 ENGL 100 FB MWF 9:10-10:00 16-104 Cutler 3.0
TBA Hours: By Arr 1.0 Hr/Wk 18-104
42429 ENGL 102 FB TTh 9:10-10:00 16-104 Cutler 2.0

42430 ENGL 100 FC MWF 10:10-11:00 16-104 Brennan 3.0
TBA Hours: By Arr 1.0 Hr/Wk 18-104
42431 ENGL 102 FC TTh 10:10-11:00 16-104 Brennan 2.0

32129 ENGL 100 FD MWF 12:10-1:00 16-206 James 3.0
TBA Hours: By Arr 1.0 Hr/Wk 18-104
42888 ENGL 102 FD TTh 12:10-1:00 16-206 James 2.0
NOTE: This group (32129 ENGL 100 FD and 42888 ENGL 102 FD) is linked with FITN 220 AA (32321) and is part of the Writing in the End Zone III Learning Community. Students must enroll in all sections as linked.

Evening Courses
32157 ENGL 100 KA TTh 6:30-7:45 18-108 Steele 3.0
TBA Hours: By Arr 1.0 Hr/Wk 18-104
42432 ENGL 102 KA TTh 7:55-8:45 18-108 Steele 2.0

ENGL 110 COMPOSITION, LITERATURE, AND CRITICAL THINKING (CSU, UC) (C-ID ENGL 120)

32160 ENGL 110 AA MWF 8:10-9:00 16-104 Brennan 3.0
TBA Hours: By Arr 1.0 Hr/Wk 18-104
43166 ENGL 110 AB MWF 9:10-10:00 14-215 Fitzgerald 3.0
TBA Hours: By Arr 1.0 Hr/Wk 18-104
40155 ENGL 110 AC MWF 10:10-11:00 18-203 Todd 3.0
TBA Hours: By Arr 1.0 Hr/Wk 18-104
41496 ENGL 110 AD TTh 9:10-10:25 16-102 Staff 3.0
TBA Hours: By Arr 1.0 Hr/Wk 18-104
40552 ENGL 110 AE MWF 9:10-10:00 16-201 Dowling 3.0
TBA Hours: By Arr 1.0 Hr/Wk 18-104
41064 ENGL 110 AF MWF 10:10-11:00 16-209 Dowling 3.0
TBA Hours: By Arr 1.0 Hr/Wk 18-104
32897 ENGL 110 AG MWF 11:10-12:00 16-106 Stockhus 3.0
TBA Hours: By Arr 1.0 Hr/Wk 18-104
41063 ENGL 110 AH MWF 11:10-12:00 16-101 Smith 3.0
TBA Hours: By Arr 1.0 Hr/Wk 18-104
41062 ENGL 110 BC TTh 9:45-11:00 16-143 Goldstone 3.0
TBA Hours: By Arr 1.0 Hr/Wk 18-104
32162 ENGL 110 BD TTh 9:45-11:00 16-101 Gridley 3.0
TBA Hours: By Arr 1.0 Hr/Wk 18-104
42434 ENGL 110 BE MWF 10:10-11:00 14-215 Fitzgerald 3.0
TBA Hours: By Arr 1.0 Hr/Wk 18-104
43164 ENGL 110 BF TTh 9:45-11:00 16-242 Scheffer 3.0
TBA Hours: By Arr 1.0 Hr/Wk 18-104
41609 ENGL 110 BG TTh 11:10-12:25 18-108 Alunan 3.0
TBA Hours: By Arr 1.0 Hr/Wk 18-104
32158 ENGL 110 BJ TTh 11:10-12:25 16-242 Cutler 3.0
TBA Hours: By Arr 1.0 Hr/Wk 18-104
32159 ENGL 110 BK TTh 12:10-1:25 16-204 Carranza 3.0
TBA Hours: By Arr 1.0 Hr/Wk 18-104
32161 ENGL 110 BL MWF 12:10-1:00 16-101 Smith 3.0
TBA Hours: By Arr 1.0 Hr/Wk 18-104
42433 ENGL 110 BI MW 11:10-12:25 16-205 Kitamura 3.0
TBA Hours: By Arr 1.0 Hr/Wk 18-104
Evening Courses
32167 ENGL 110 JA Wed 6:30-9:35 16-105 Reynolds 3.0
TBA Hours: By Arr 1.0 Hr/Wk 18-104
32898 ENGL 110 JC Mon 6:30-9:45 16-102 Vandenberg 3.0
TBA Hours: By Arr 1.0 Hr/Wk 18-104

Online Course
40158 ENGL 110 OLH Online 4-ONLN Heyman 3.0

ENGL 161 CREATIVE WRITING I (CSU, UC) (C-ID ENGL 200)

32176 ENGL 161 AX TTh 11:10-12:25 16-201 Newman 3.0
Evening Course
32177 ENGL 161 JX Thu 6:30-9:30 18-204 Reynolds 3.0

The CSM Catalog is your reference document for detailed degree, course or college information

Please visit collegeofsanmateo.edu/catalog to view or download the CSM Catalog

READ 412 COLLEGE-LEVEL INDIVIDUALIZED READING IMPROVEMENT (CSU)

41451 READ 412 AO By Arr 9.0 Hrs/Wk 18-101 Pienaar 0.5-3.0

READ 454 COLLEGE-LEVEL VOCABULARY IMPROVEMENT I (CSU)

41122 READ 454 AO By Arr 4.5 Hrs/Wk 18-101 Pienaar 0.5-1.5

READ 455 COLLEGE-LEVEL VOCABULARY IMPROVEMENT II (CSU)

41123 READ 455 AO By Arr 4.5 Hrs/Wk 18-101 Pienaar 0.5-1.5

READ 807 BASIC PHONIC SKILLS FOR NON-NATIVE SPEAKERS32747 READ 807 AX MWF 9:10-10:00 16-202 Paolini 3.0
TBA Hours: By Arr 1.0 Hr/Wk 18-101**READ 808 BASIC PHONIC SKILLS**32748 READ 808 AX MWF 9:10-10:00 16-202 Paolini 3.0
TBA Hours: By Arr 1.0 Hr/Wk 18-101**READ 812 INDIVIDUALIZED READING IMPROVEMENT**

32750 READ 812 AO By Arr 9.0 Hrs/Wk 18-101 Pienaar 0.5-3.0

READ 814 BASIC SPELLING MASTERY

37454 READ 814 AO By Arr 3.0 Hrs/Wk 18-101 Pienaar 0.5-1.0

READ 815 ADVANCED SPELLING MASTERY

37455 READ 815 AO By Arr 3.0 Hrs/Wk 18-101 Pienaar 0.5-1.0

READ 825 INTRODUCTION TO COLLEGE READING39456 READ 825 AA MWF 9:10-10:00 16-101 Marron 3.0
TBA Hours: By Arr 1.0 Hr/Wk 18-10132732 READ 825 AB TTh 9:45-11:00 16-240 Pienaar 3.0
TBA Hours: By Arr 1.0 Hr/Wk 18-101

44094 READ 825 OLH Online 4-ONLN Marron 3.0

READ 830 COLLEGE AND CAREER READING38805 READ 830 AD MWF 10:10-11:00 16-101 Marron 3.0
TBA Hours: By Arr 1.0 Hr/Wk 18-10132739 READ 830 JA Mon 6:30-9:45 16-101 Marron 3.0
TBA Hours: By Arr 1.0 Hr/Wk 18-101

41794 READ 830 OLH Online 4-ONLN Marron 3.0

READ 852 VOCABULARY IMPROVEMENT I

37458 READ 852 AO By Arr 4.5 Hrs/Wk 18-101 Pienaar 0.5-1.5

READ 853 VOCABULARY IMPROVEMENT II

37459 READ 853 AO By Arr 4.5 Hrs/Wk 18-101 Pienaar 0.5-1.5

REAL ESTATE**R.E. 110 REAL ESTATE PRACTICE (CSU)**

41585 R.E. 110 JA Tue 6:30-9:30 14-202 Gottlieb 3.0

R.E. 121 LEGAL ASPECTS OF REAL ESTATE I (CSU)

32720 R.E. 121 JA Mon 6:30-9:45 14-205 Staff 3.0

R.E. 141 REAL ESTATE APPRAISAL: BASIC (CSU)

32722 R.E. 141 JA Wed 6:30-9:35 14-206 Taylor 3.0

R.E. 200 REAL ESTATE ECONOMICS (CSU)

43543 R.E. 200 JA Thu 6:30-9:20 14-117 Gilmartin 3.0

SOCIAL SCIENCE**SOSC 301 INTRODUCTION TO ALCOHOL AND OTHER DRUG STUDIES (CSU)**

38975 SOSC 301 AA Tue 9:10-12:00 14-213 Perezyanez 3.0

SOSC 302 PHARMACOLOGY AND PHYSIOLOGICAL EFFECTS OF ALCOHOL AND OTHER DRUG ABUSE (CSU)

43431 SOSC 302 JA Tue 6:30-9:30 18-308 DeDomenico 3.0

SOSC 304 INTERVENTION, TREATMENT AND RECOVERY (CSU)

33979 SOSC 304 JA Thu 6:30-9:30 14-102 Eiland 3.0

SOSC 307 FAMILY SYSTEMS IN ADDICTION (CSU)40965 SOSC 307 AAH Fri 9:00-12:00 LATC Perezyanez 3.0
NOTE: This section meets at the Latino Commission, Grand Ave., Suite 301, S. San Francisco (650) 244-1444**SOSC 308 GROUP AOD (ALCOHOL AND OTHER DRUG) COUNSELING PROCESS (CSU)**

39423 SOSC 308 JA Mon 7:00-10:15 14-102 Schulze 3.0

SOSC 314 INDIVIDUAL AOD (ALCOHOL AND OTHER DRUG) COUNSELING PROCESS (CSU)

37344 SOSC 314 JA Tue 6:30-9:30 14-118 Eiland 3.0

SOSC 316 FIELD STUDIES AND SEMINAR II (CSU)

33980 SOSC 316 JA Wed 6:30-9:35 16-106 Stocker 3.0

SOSC 325 CO-OCCURRING DISORDERS II: MANAGMENT AND TREATMENT (CSU)

43461 SOSC 325 JA Thu 6:00-9:00 14-118 Fullerton 3.0

SOSC 690 SPECIAL PROJECTS (CSU)

Requires approval of Division Dean.

32791 SOSC 690 AA By Arr 2.0 Hrs/Wk 10-413 Henson 2.0

32792 SOSC 690 BB By Arr 1.0 Hr/Wk 10-413 Henson 1.0

43403 SOSC 690 CC By Arr 3.0 Hrs/Wk 10-413 Henson 3.0

SOCIOLOGY**SOCI 100 INTRODUCTION TO SOCIOLOGY (CSU, UC)**

32769 SOCI 100 AA TTh 8:10-9:25 10-192 Mathur 3.0

32766 SOCI 100 AC MWF 9:10-10:00 10-192 Mathur 3.0

32768 SOCI 100 AD TTh 9:45-11:00 10-192 Mathur 3.0

40230 SOCI 100 AE MWF 11:10-12:00 10-193 Williams 3.0

42872 SOCI 100 AG MWF 12:10-1:00 10-192 Mathur 3.0

43459 SOCI 100 AJ TTh 11:10-12:25 10-192 Mathur 3.0

43738 SOCI 100 AK MWF 1:10-2:00 10-192 Mathur 3.0

Evening Off Campus Course

32963 SOCI 100 JAH Wed 5:45-8:45 MK Crawford 3.0

NOTE: This section meets at the Martin Luther King Center, 725 Monte Diablo Ave., San Mateo.

43155 SOCI 100 OLH Online 4-ONLN Williams 3.0

SOCI 105 SOCIAL PROBLEMS (CSU, UC)

36002 SOCI 105 AA MWF 10:10-11:00 10-192 Mathur 3.0

SOCI 141 RACE AND ETHNIC RELATIONS (CSU, UC)

40228 SOCI 141 AA MWF 12:10-1:00 10-193 Williams 3.0

SOCI 690 SPECIAL PROJECTS (CSU)

Requires approval of Division Dean.

32781 SOCI 690 AA By Arr 2.0 Hrs/Wk 10-413 Henson 2.0

32782 SOCI 690 BB By Arr 1.0 Hr/Wk 10-413 Henson 1.0

42885 SOCI 690 CC By Arr 3.0 Hrs/Wk 10-413 Henson 3.0

SPANISH**SPAN 110 ELEMENTARY SPANISH (CSU, UC)**32793 SPAN 110 AX Daily 8:10-9:00 18-203 Castillo 5.0
TBA Hours: By Arr 2.0 Hrs/Wk 18-112**SPAN 111 ELEMENTARY SPANISH I (CSU, UC)**32795 SPAN 111 AE MWF 12:10-1:00 18-203 Castillo 3.0
TBA Hours: By Arr 1.0 Hr/Wk 18-112**Evening Course**32798 SPAN 111 JX Tue 6:30-9:30 18-203 Collis 3.0
TBA Hours: By Arr 1.0 Hr/Wk 18-112**SPAN 112 ELEMENTARY SPANISH II (CSU, UC)**32800 SPAN 112 JX Tue 6:30-9:30 16-104 Dinelli 3.0
TBA Hours: By Arr 1.0 Hr/Wk 18-112**SPAN 120 ADVANCED ELEMENTARY SPANISH (CSU, UC)**41796 SPAN 120 AX Daily 9:10-10:00 18-203 Castillo 5.0
TBA Hours: By Arr 2.0 Hrs/Wk 18-112**SPAN 121 ADVANCED ELEMENTARY SPANISH I (CSU, UC)**43188 SPAN 121 AX Daily 9:10-10:00 18-203 Castillo 3.0
TBA Hours: Daily 1.8 Hrs/Wk 18-112
Start and end dates for section 43188:1/13 3/21**SPAN 122 ADVANCED ELEMENTARY SPANISH II (CSU, UC)**41797 SPAN 122 AX Daily 9:10-10:00 18-203 Castillo 3.0
TBA Hours: Daily 1.7 Hrs/Wk 18-112
Start and end dates for section 41797:3/3 5/16**SPAN 131 INTERMEDIATE SPANISH I (CSU, UC)**32803 SPAN 131 AX MWF 11:10-12:00 18-203 Castillo 3.0
TBA Hours: By Arr 1.0 Hr/Wk 18-112**SPAN 132 INTERMEDIATE SPANISH II (CSU, UC)**32804 SPAN 132 AX MWF 11:10-12:00 18-203 Castillo 3.0
TBA Hours: By Arr 1.0 Hr/Wk 18-112**SPAN 140 ADVANCED INTERMEDIATE SPANISH (CSU, UC)**

32805 SPAN 140 AX MWF 11:10-12:00 18-203 Castillo 3.0

SPAN 690 SPECIAL PROJECTS (CSU)

Requires approval of Division Dean.

33260 SPAN 690 AAB By Arr 1.0 Hr/Wk 15-168 Comerford 1.0

33259 SPAN 690 AB By Arr 2.0 Hrs/Wk 15-168 Comerford 2.0

43345 SPAN 690 AC By Arr 3.0 Hrs/Wk 15-168 Comerford 3.0

Final Exam Schedule: Spring 2014

Final examinations are held in the classroom in which the class has met during the semester. Students are requested not to contact instructors or the Office of Admissions and Records for individual grades. **Final grades will be available beginning June 3, 2014 on WebSMART at collegeofsanmateo.edu/websmart.**

Day Classes

Time and Days of Regular Class Meeting		Final Examination	
8:10 am	MWF, MW, Daily	8:10-10:40 am	Friday, May 23
8:10 am	TTh, T, Th	8:10-10:40 am	Thursday, May 22
9:10 am	MWF, MW, Daily	8:10-10:40 am	Wednesday, May 21
9:35/9:45 am	TTh, T, Th	8:10-10:40 am	Tuesday, May 20
10:10 am	MWF, MW, Daily	8:10-10:40 am	Monday, May 19
11:10 am	TTh, T, Th	11:10- 1:40 pm	Thursday, May 22
11:10 am	MWF, MW, Daily	11:10- 1:40 pm	Wednesday, May 21
12:10 pm	MWF, MW, Daily	11:10- 1:40 pm	Monday, May 19
12:35/12:45 pm	TTh, T, Th	11:10- 1:40 pm	Tuesday, May 20
1:10/1:35 pm	MWF, MW, Daily	2:10- 4:40 pm	Wednesday, May 21
1:10 pm	TTh, T, Th	2:10- 4:40 pm	Thursday, May 22
2:10 pm	MWF, MW, Daily	2:10- 4:40 pm	Monday, May 19
2:10 pm	TTh, T, Th	2:10- 4:40 pm	Tuesday, May 20
All Others		11:10- 1:40 pm	Friday, May 23

Notes:
When a course consists of lecture and laboratory, the final examination is scheduled according to the time of the lecture. If your class meets at a time other than those listed, please check with your instructor for further information regarding your final examination. If there is an unavoidable conflict in your final examination schedule, see your instructor in one of the classes and request to take the examination with another class. Examinations start promptly at hours indicated and are held in the same room in which the class regularly meets.

Evening/Weekend Classes

Final examinations for all evening, Saturday and Sunday classes will be given during the last class meeting for all courses:

Day of Regular Class Meeting	Final Examination
Monday classes	Monday, May 19
Tuesday classes	Tuesday, May 20
Wednesday and Monday/Wednesday classes	Wednesday, May 21
Thursday and Tuesday/Thursday classes	Thursday, May 22
Friday classes	Friday, May 23
Saturday classes	Saturday, May 17
Sunday classes	Sunday, May 18

Note:
Monday/Wednesday classes follow the Wednesday final examination schedule, and Tuesday/Thursday classes follow the Thursday schedule.

SPAN 801 CONVERSATIONAL SPANISH I, ELEMENTARY

41474 SPAN 801 JX Tue 6:30-9:30 18-203 Collis 2.0

SPAN 802 CONVERSATIONAL SPANISH II, ADVANCED ELEMENTARY

39179 SPAN 802 JX Tue 6:30-9:30 16-104 Dinelli 2.0

Looking for College Forms?**Commonly requested forms, such as:**

Course Substitution, Residency Reclassification
Prerequisite Equivalency, Audit Request,
and many more

Can be found at
collegeofsanmateo.edu/forms

**Need more
information?**

WebSCHEDULE allows you to:

collegeofsanmateo.edu/webschedule

- ~ View course descriptions & prerequisite information
- ~ Sort classes by type (online, evening, late-start, short)
- ~ View specific transferability information
- ~ View instructor contact info for **online** courses

Fees

Fees are due and payable at the time of registration. **Students will not be able to register for classes if they have any outstanding balance.** On **Monday, January 6, 2014** students who have any outstanding fee balances for Spring 2014 will be dropped at midnight for non-payment of fees. Beginning **Tuesday, January 7, 2014**, one week prior to the start of the spring semester, students will be dropped at midnight the day following their registration for non-payment of outstanding fees. For more important information, visit collegeofsanmateo.edu/fees.

Student enrollment fees are set by California's legislature and governor and are subject to change at any time. It is possible that your fees may be adjusted at a future date. All student records are automatically held until all outstanding debts to the District colleges have been cleared. Unpaid bills may be sent to collections.

Students who are classified as California residents as defined in the California Education Code will be charged an enrollment fee, a health services fee and a student representation fee. An optional student body fee also will be assessed. In accordance with California law, the enrollment fees may be waived for California residents who demonstrate financial need and qualify for a Board of Governors Enrollment Fee Waiver (BOGW). Contact the College Financial Aid Office for additional information.

Students who are classified as nonresidents will be charged a tuition fee in addition to the enrollment fee, health services fee and student representation fee. International Students (F-1 Visa) are subject to a health insurance requirement and are charged tuition and capital outlay fees in addition to enrollment fees. Contact the International Student Center for details.

The student representation fee was established by student election to support student advocacy before local, state and federal offices and agencies.

In addition, students will be required to purchase textbooks and miscellaneous supplies, as well as tools and technical supplies for certain programs. In some courses students will also be required to pay a non-refundable instructional materials charge.

Fees are subject to change at any time by action of the State Legislature, Board of Governors of the California Community Colleges, or the District Board of Trustees.

If you need assistance in paying your fees, you are encouraged to:

- Enroll in an inexpensive payment plan via WebSMART
- Apply for financial aid (www.fafsa.gov) at least five business days prior to registering for your classes
- Complete the Board of Governors Fee Waiver via WebSMART

If you still need financial assistance after exhausting all options listed above, please contact the Vice President of Student Services at csmvps@smccd.edu.

AB 540 Students

Under Assembly Bill 540 (AB540), you may be exempt from paying nonresident tuition. Students who have attended a California high school for three years AND received a California high school diploma or its equivalent, such as a GED or passed the high school proficiency exam, are exempt from paying non resident tuition. See page 4 for more information.

Credit and Refund Policy

Enrollment Fee, Nonresident Tuition Fee, Health Services Fee and Parking Fee

Students who officially withdraw from all courses, or reduce their program prior to the first class meeting or by the course deadline date will receive credit toward future fees for the full amount of all fees paid for those classes. To view deadline date, check course in WebSMART. A \$10 processing fee (plus an additional \$50 processing fee for nonresident tuition) will be retained by the College if a refund is issued to a student withdrawing from all classes. For all courses dropped after the deadline, these fees are not refundable unless an action of the College (e.g. class cancellation) prevents a student from attending class. Parking permit fees are not refundable.

Student Body Fee and Student Representation Fee

Students enrolling during the normal registration period in semester-long classes may request a waiver or a refund of the Student Body Fee and/or the Student Representation Fee through the last day to drop semester-long classes (see Important Dates on page 2). Students enrolling after the end of this deadline may request a waiver or a refund of these fees within one (1) week of completing registration. Students enrolled only in short courses have until the first class session to request a waiver or refund of these fees. Students requesting a waiver or a refund of the Student Body Fee and/or the Student Representation Fee must do so in-person at the Center for Student Life and Leadership Development in Building 17, Room 112.

Variable Unit Courses

No enrollment fee or nonresident tuition refund or credit will be available to students enrolled in variable unit courses who earn fewer units of credit than the number for which they originally registered. Students earning additional units will be charged accordingly.

Important:

1. Credit balances remain on student accounts for a maximum of five (5) years.
2. A student may either choose to maintain a credit balance on account or contact the Business Office (Building 10, Room 360, 574-6412) to arrange for a refund.
3. Refunds are NOT issued automatically and are subject to a \$10 processing fee if the student withdraws from all classes. Refunds of nonresident tuition are subject to an additional \$50 processing fee.
4. Fees paid by personal check require 30 days for bank clearance before refunds can be processed.
5. To be eligible for a credit or refund, a student must officially withdraw from a course within the stated deadline. To view deadline date, check course in WebSMART. A withdrawal initiated by an instructor may NOT result in a credit or refund.
6. Fees will be credited or refunded without a processing charge if an action of the College (e.g. class cancellation) prevents a student from attending.
7. Student records, including transcripts, are withheld until all debts to the District colleges have been cleared.

Fee Type	Amount	Required of																		
Enrollment Fee	\$46 per unit	All students except high school students enrolling for less than 11.5 units through the Concurrent Enrollment Program or Middle College High School Program																		
Health Services Fee*	\$16 Summer \$19 Fall \$19 Spring	All students except those enrolled ONLY in off-campus classes, Saturday classes, distance learning courses, or the Concurrent Enrollment Program																		
Student Representation Fee**	\$1	All students except High School students enrolled in the Concurrent Enrollment Program or Middle College High School Program																		
Nonresident Tuition Fee	\$208 per unit (plus \$46 per unit Enrollment Fee)	Nonresidents of California who are residents of other states Students who possess "T" or "U" visas are exempted																		
Nonresident Student Capital Outlay Fee	\$9 per unit	Nonresidents of California who are residents of other states																		
International Application Fee	\$50	For fall and spring semesters only																		
International Student Tuition Fee	\$208 per unit (plus \$46 per unit Enrollment Fee)	International students																		
International Student Capital Outlay Fee	\$9 per unit	International students																		
International Student (F-1 Visa) Health Insurance studentinsuranceusa.com	\$159 Summer \$397.50 Fall or Spring \$953 Full Year	All F-1 Visa international students who do not present proof that they have the required level of private health insurance																		
Student Body Fee***	\$8 Fall \$8 Spring	Students who purchase a photo ID student body card receive discounts throughout the year and also support many student-sponsored activities and programs (The student body fee is automatically assessed as part of your total fees; if you choose not to pay this fee, visit the Center for Student Life and Leadership Development, Building 17, Room 112, before last day to drop with eligibility for credit and refund deadline. See Important Dates on page 2.)																		
Parking Fee***	<table border="1"> <thead> <tr> <th></th> <th>Regular</th> <th>BOG</th> </tr> </thead> <tbody> <tr> <td>Summer</td> <td>\$25</td> <td>\$25</td> </tr> <tr> <td>Fall</td> <td>\$50</td> <td>\$30</td> </tr> <tr> <td>Spring</td> <td>\$50</td> <td>\$30</td> </tr> <tr> <td>Daily</td> <td>\$2</td> <td>\$2</td> </tr> <tr> <td>Two-Term (Fall/Spring)</td> <td>\$90</td> <td>\$60</td> </tr> </tbody> </table>		Regular	BOG	Summer	\$25	\$25	Fall	\$50	\$30	Spring	\$50	\$30	Daily	\$2	\$2	Two-Term (Fall/Spring)	\$90	\$60	Persons who park motor vehicles on campus (Daily permits may be purchased for \$2 from ticket dispensers in designated areas). The parking fee is optional and not transferable to other students; disabled parking permits are issued only by the Disabilities Resource Center - See Parking Regulations on page 23. BOG parking permits are for low income students who demonstrate financial need under federal or state standards. For lost or stolen permits, please see Parking Regulations on page 23.
	Regular	BOG																		
Summer	\$25	\$25																		
Fall	\$50	\$30																		
Spring	\$50	\$30																		
Daily	\$2	\$2																		
Two-Term (Fall/Spring)	\$90	\$60																		
Audit Fee	\$15 per unit (students enrolling in a variable unit course must pay for maximum units)	Students enrolled in 10 or more units for credit can audit up to three additional units free of charge - See Auditing policy in the CSM Catalog																		
Instructional Materials Fee	Varies by course	Students enrolled in courses for which instructional materials are needed. Check course information in class listings or WebSCHEDULE. Non-refundable.																		
Duplicate Diploma Fee	\$20																			
Returned Check Fee	\$20	Students whose personal checks are returned by the bank (Only cash, credit card or cashier's check will be honored to clear a returned check - Bookstore fee may differ)																		
Transcript Fee	\$5 official \$10 additional for rush service	Students requesting a transcript of their academic record at College of San Mateo, Cañada College and/or Skyline College (The first two transcripts ever requested are free)																		

* Students who depend exclusively upon prayer for healing in accordance with the teachings of a bona fide religious sect, denomination, or organization may be exempted from paying the health services fee. For details, contact the Health Center, Building 1, Room 147, (650) 574-6396.

** A student has the right to refuse to pay the \$1 student representation fee for religious, political, moral or financial reasons. This refusal must be submitted in writing to the Center for Student Life and Leadership Development, Building 17, Room 112, before last day to drop with eligibility for credit and refund deadline. See Important Dates on page 2.

*** This fee is optional. Please refer to "Required Of" column for further information.

+ Acceptable forms of payment are cash, check, credit card and debit card. Cash is accepted in-person only. Make check payable to College of San Mateo.

College Catalog & Policies

The College of San Mateo Catalog contains detailed course descriptions, suggested programs of study, a list of transferrable courses, degree and certificate requirements, and general college information. There are also a number of college policies that are important for students to know. These include, but are not limited to:

- Course Repetition
- Crime Awareness/Student Right To Know
- Dismissal
- Drug-Free Campus
- Guidelines for Addressing Cheating and Plagiarism
- Probation
- Sexual Assault
- Sexual Harassment
- Smoking
- Student Conduct and Disciplinary Actions
- Student Grievances and Appeals
- Student Rights and Nondiscrimination
- Privacy Rights

For more information about all the items listed above, please obtain a free copy of the catalog at the Bookstore or view online at collegeofsanmateo.edu/catalog.

Support Services & Special Programs

CSM offers a variety of student services to assist you in reaching your educational goals. These programs include:

- Admissions & Records
- CalWORKs
- Career Services
- Child Development Center
- Counseling Services
- Disabled Students Programs & Services (DSPS)
- Extended Opportunity Programs & Services (EOPS)
- Financial Aid
- Health Services Center
- High School Enrollment Programs
- International Student Center
- Learning Center
- Middle College
- Multicultural Center
- Placement Testing
- Priority Enrollment Program (PEP)
- Psychological Services
- Puente Project
- Scholarships
- Student Life
- Transfer Services
- Veterans Services

For specific information about each of these programs, their locations and hours of operation, please visit our Student Services webpage at collegeofsanmateo.edu/student-services. The CSM Catalog is available online and provides detailed information about each of these programs.

Bookstore

Books and supplies may be purchased at the College of San Mateo Bookstore (College Center, Building 10, Second Floor, 574-6366). To purchase and find information regarding course textbooks and business hours, go to collegeofsanmateo.edu/bookstore.

CSM in Your Community (continued from outer front cover)



According to Dean Drumheller, festival co-coordinator, "All of the workshops and activities are packed all day long, but the most sought-out event is always the planetarium show presented by Professor of Astronomy Darryl Stanford. Every show fills to capacity, and each year we add more shows to accommodate the demand."

Family Science & Astronomy Festival, now in its third year originally began as an astronomical event, and, as the name implies, astronomy remains a major focus. In addition to the planetarium shows and astronomy workshops, the festival brings in keynote speakers who are highly regarded in the field of astronomy. Most recently the college hosted Planetary Scientist Chris McKay from NASA Ames Research Center who spoke about his current Mars Curiosity Rover mission.

The festivities conclude with Jazz Under the Stars, the ultimate "star party." Jazz Under the Stars combines spectacular sights and sounds as visitors view the night sky using telescopes on the rooftop observatory while they listen to great jazz music broadcast by KCSM-91.1FM.

"The festival is a great way to open the college to the public and for the public to see what's going on at the college and to enjoy our great facilities. By presenting science to the community in this entertaining format, it allows us to give something back to our community for its ongoing support," comments Drumheller.

Family Science & Astronomy Festival will return October of 2014. For more information, visit collegeofsanmateo.edu/astronomy.

Professor Mohsen Janatpour (continued from page 3)

Picking up information is easy—assimilating it into life and becoming a better person is a challenge. To be educated is to be well rounded. To achieve good science, you need imagination. Art helps to develop imagination; conversely, the discipline to question everything belongs in the domain of science which helps to organize the mind for art. So the answer is that science and art inform and benefit each other.

What is Project Stargaze and what does it contribute to the community?

We bring approximately 2,000 elementary and middle school students to the college every year for planetarium shows. Before each show, we do a science demonstration that engages the students and prepares them for the show. Our goal with Project Stargaze is to capture their interest at an early age so that science becomes part of their lives.

As the coordinator of CSM's astronomy program, you have broadened CSM's connections with the astronomy community. How does this connection benefit the community at large?

To me, astronomy is a hook to raise the public's scientific awareness to a higher level. Astronomy offers a sense of awe. My message to the community is, "I want to awe you so that you really learn to enjoy science," and astronomy is the tool to do just that.

You are the co-founder of CSM's Family Science & Astronomy Festival. Now in its third year, it is definitely growing in popularity. What do you see as the value this event offers the community?

It's important for the community to know what we are doing at CSM. I want to emphasize the word "community" in community college. With our modern facilities we have a lot to offer to our community. When I became the coordinator of astronomy, I reached out to the San Mateo County Astronomical Society to become community partners. The Society and CSM co-sponsor the Family Science & Astronomy Festival. Every year our attendance grows and my hope is that by reaching more members of the community, we will raise the level of scientific understanding. The Festival is just a great event for learning and has something for any age group. There are hands-on workshops for children, planetarium shows, telescopic observation of the sky, and presentations by professional scientists for adults and other activities for everyone.

You are something of a renaissance man because you are knowledgeable in a number of fields. If you could have lived in another era, what would it be and why?

Of course, I think the era we are living is the best. More innovations and new ideas for the betterment of human life take place now than any other era in the history. But if I were to choose another time, it would be the era that spanned the end of the 19th and the beginning of the 20th centuries—a super mentally productive era in art and science. And if it were possible to meet someone from that era, it would be Henry Poincare, the great French mathematician—a polymath, a Universalist, and a philosopher whose contribution to our understanding of mathematics and physics is immense.

What inspires you?

Artistically, poems of my favorite poet, Rumi, inspire me. But professionally my students inspire me. They inspire me, they energize me, and they make me work hard. Interacting with my students is a very exciting activity. There is nothing more inspiring than seeing curiosity and a sense of awe in students' faces.

When you retire, how do you plan to follow up on your academic career?

In retirement I want to be an art instructor. My plan is to find a warehouse space that I can use as an art studio and classroom. But before I retire I have a lot of work to do here, including the completion of my book on the philosophy of art.

Student Success Story (continued from page 1)

Due to his academic success and student leadership participation, Gabriel received a number of scholarships at CSM. In addition, he was selected for a coveted internship with UC Berkeley's Physics Department to assist with research projects during summer of 2012.

In spring 2013, Gabriel graduated from CSM Summa Cum Laude, with highest honors—earning a perfect 4.0 GPA—and received A.S. degrees in both math and physics. As a follow-up, he participated in a 10-week summer internship at Cornell University where he worked on accelerator physics and material science which he described as "amazing!"

Based on his achievements at CSM, Gabriel had his choice of attending a number of the most respected universities in the nation. It made for a tough decision as he received acceptances to UC Berkeley with a full scholarship as a physics major, and to UCLA, which offered him its most prestigious scholarship. However, it was Columbia University's offer of a full-ride scholarship to study physics that clinched the decision for Gabriel.

"It is hard to put into words how much CSM has done for me and how appreciative I am. I came into CSM with terrible high school transcripts and little confidence I could succeed in school, and I left to attend an Ivy League university as one of Columbia's PALS Scholars (Program for Academic Leadership and Service) which is the highest award they offer transfer students. I am equal parts excited and nervous to be attending such a prestigious university, but I have no doubt that my work at CSM has prepared me to succeed."

Since discovering his passion for learning, Gabriel is planning on a career in academia. His long-range plans include earning a Ph.D. in physics and becoming a university professor and researcher. "It's important to me that I try to pay forward the tremendous gift that CSM and Rob Komars, my calculus teacher, have given me, but it's also important to me that I keep learning. CSM completely changed my perspective of education and, more importantly, of myself, and I will be forever grateful to the college. I am extremely proud of the time I spent there and to be a CSM alum."

Campus Map

One-day Permits

\$2 per day. Valid only during class hours from 7 am to 10 pm
Permit machines indicated by **D** on the map: Hillsdale Lot 1, Beethoven Lot 2, Galileo Lot 6, and Stadium Lot 11

Visitor Parking

Visitors to campus may park in Pay-By-Space visitor parking areas in Beethoven Lot 2A and 2D and Forum Lot 8. Visitors must purchase a visitor permit (\$1 per hour) at the Pay-By-Space permit machines located in the lots (indicated by **V** on the map).

Student Parking

Hillsdale Lot 1, Beethoven Lot 2, Galileo Lots 6, Bulldog Lots 9, 9B, 9C, 9D or Stadium Lot 11

Staff Parking

Beethoven Lot 2B, DaVinci Lot 3, Socrates Lot 4, Marie Curie Lot 5A, 5B*, Edison Lot 7*, Bulldog Lot 9A, Sandbox Lot 10
(* indicates lot available for student parking after 5 pm only, permit required)

Restricted Parking

Olympian Lot 12 staff and members of San Mateo Athletic Club, and patrons and clients of Cosmetology and Dental programs

Disabled Parking

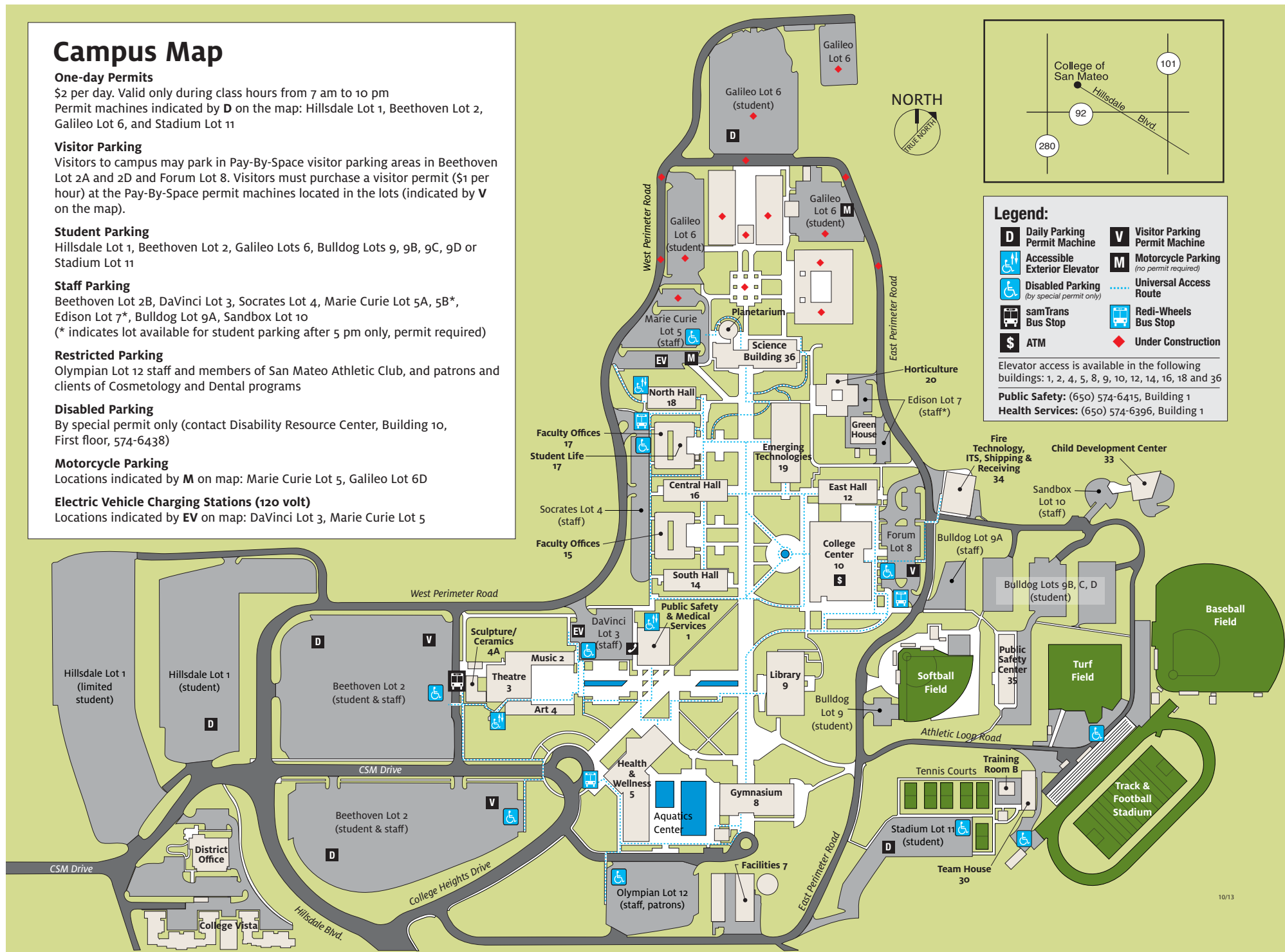
By special permit only (contact Disability Resource Center, Building 10, First floor, 574-6438)

Motorcycle Parking

Locations indicated by **M** on map: Marie Curie Lot 5, Galileo Lot 6D

Electric Vehicle Charging Stations (120 volt)

Locations indicated by **EV** on map: DaVinci Lot 3, Marie Curie Lot 5



Campus Directory

Main Number (650) 574-6161

Department/Office	Phone	Bldg-Room
Admissions & Records	574-6165	10-360
ASCSM (Student Government)	574-6141	17-112
Assessment/Placement Testing	574-6262	10-370
Bookstore	574-6366	10-202
CalWORKS	574-6155	10-120K
Career Services	574-6619	10-340
Cashier's Office	574-6412	10-360
Child Development Center	574-6279	Bldg. 33
Community Education	574-6149	DO-217
Community Relations & Marketing	574-6231	10-462
Cosmetology	574-6361	5-251
Counseling Center	574-6400	10-340
Dental Assisting	574-6212	5-329
Disabled Students Programs and Services (DSPS)	574-6438	10-120
Distance Education	574-6271	10-437
EOPS/CARE	574-6154	10-110
Facilities Rental/Scheduling	574-6220	10-439
Financial Aid/Scholarships	574-6146	10-360
Fax (Financial Aid)	574-6304	
Health Services Center	574-6396	1-147
High School Enrollment Programs	574-6646	10-462
International Student Center	574-6525	10-310
KCSM	574-6586	Bldg. 9
Learning Center	574-6570	10-220
Library	574-6100	Bldg. 9
Lost & Found	574-6415	1-100
Mental Health CARES Project	574-6172	10-471
Middle College	574-6101	17-154
Multicultural Center	574-6154	10-112
Parking	574-6415	1-100
Planetarium	574-6256	36-100
Psychological Services	574-6396	10-147
Public Safety (Security)	574-6415	1-100
San Mateo Athletic Club	378-7373	5-1 st floor
Student Life and Leadership	574-6141	17-112
Study Abroad	574-6533	10-310
Swimming Pool	574-6461	
Theatre	574-6191	Bldg. 3
Event Info Line	378-7218	
Transcript Information	358-6858	10-360
Transfer Services	358-6839	10-340
Transition to College	574-6487	10-120E
Veterans Resource Center	574-6675	16-150

Academic Divisions

For a full listing of instructional programs within each division, visit collegeofsanmateo.edu/divisionoffices.

Business & Technology Division	574-6228	19-113
Creative Arts & Social Science Division	574-6494	10-413
Language Arts Division	574-6314	15-168
Math & Science Division	574-6268	36-311
Kinesiology, Athletics & Dance Division	574-6461	5-343

Parking Regulations

Parking Permit Requirements

All persons driving motor vehicles (except motorcycles) on to campus and utilizing the parking facilities during regular class hours (Monday-Friday, 7 am-10 pm), including final examinations, are required to obtain and display a parking permit on their vehicle. A parking permit is not required for students riding motorcycles and parking must be in designated Motorcycle Parking in Marie Curie Lot 5 and Galileo Lot 6. Student parking permits are available for \$50 each for the fall and spring semesters (Fall/Spring Permit \$90) and \$25 for the summer session. Parking permits for students with California Board of Governors (BOG) waivers are \$30 per semester (fall or spring) and \$25 for the summer session.

Lost or Stolen Parking Permits

If a permit is lost or stolen, replacements are available at full price.

Purchasing Parking Permits

Students may purchase parking permits only online using WebSMART. Permits may be ordered and paid for online and mailed to the student's residence. Students may also order a permit online from computers located on the third floor of Building 10 (Admissions and Records Office and Business Office) and then pay for the permit and pick it up in the Cashier's Office. Temporary Parking permits are available online after purchasing a permit. Please follow online instructions on how to obtain your temporary parking permit while awaiting delivery of permit in the mail.

Displaying Student Parking Permits

Permits must be displayed in the vehicle with the number visible from the exterior of the vehicle. They may be either affixed on the inside lower left of the windshield (above the steering wheel) or affixed to a plastic hanger suspended from the inside rear view mirror. Plastic permit hangers may be obtained from the Bookstore for \$1 plus tax. Permits may be used on multiple vehicles.

Vehicles with improperly displayed permits will be subject to citation. It is the permit holder's responsibility to properly display the permit in the vehicle and to notify CSM's Department of Public Safety promptly if the permit is lost or stolen.

Daily parking permits are available for purchase for \$2 each from permit dispensers in Hillsdale Lot 1B, Beethoven Lots 2A and 2E, Galileo Lot 6B, and Stadium Lot 11. Daily permits are valid in all lots where, and when, students are authorized to park. These permits must be displayed face-up on the dashboard.

Semester parking permits and daily parking permits are valid on all three campuses of the District (College of San Mateo, Skyline College and Cañada College).

A grace period allowing for the purchase of permits will be in effect during the first two weeks of the spring and fall semesters and the first week of the summer session in student lots only. Citations will be issued beginning on Monday, January 27, 2014 for students parking without a valid permit. All staff parking lots are strictly enforced. The grace period pertains only to student permits with all other parking regulations enforced at all times in all parking lots and roadways.

Visitor Parking

Visitors may park in PayBySpace Visitor Lots Beethoven 2A, 2D and Forum Lot 8 (\$0.25 for each 15 minutes). After entering the space

number in which the vehicle is parked into the machine and depositing sufficient money to purchase required time the permit machine located at each of the visitor lots will issue a receipt that need not be displayed in the vehicle.

Visitors may also park in a student lot after purchasing and displaying in the vehicle (face-up on dashboard) a \$2 daily permit. Parking permit machines are located in Hillsdale Lot 1B, Beethoven Lots 2A and 2E, Galileo Lot 6B and Stadium Lot 11. For the location of the parking lots please see a campus map.

San Mateo Athletic Club Parking

Special parking permits issued by the San Mateo Athletic Club are required at all times for parking in Olympian Lot 12. All other permits are not valid. For more information, call 378-7373 or visit smccd.edu/sanmateoathleticclub.

Traffic and Parking Regulations

The speed limit on the campus is 15 mph.

Parking is permitted only on blacktop surfaces in specifically marked parking spaces. Parking on unpaved areas, in roadways, in crosshatched areas, in marked end zones, in areas posted as no parking zones or in any unauthorized area is prohibited. Vehicles parked backed into diagonal parking spaces can create a hazard when exiting and will be subject to citation.

Driving or parking within the inner campus is prohibited.

The campus is open daily from 7 am to 10 pm.

Stopped or standing vehicles on sidewalks, roadways or restricted areas will be subject to citation.

Skateboards and Bicycles

The riding of skateboards on campus is prohibited by SMCCCD Regulations. Bicycles may be operated on campus. The California Vehicle Code prohibits the operation of bicycles on sidewalks.

Public Transit

SamTrans bus service has two direct routes to the campus (#250 and #260) and connecting bus routes from the Hillsdale Shopping Center and the Caltrain Station serving the CSM campus throughout the day. All buses have wheelchair lifts and also serve students attending evening classes. Routing information is available by calling 1-800-660-4BUS or via the Web at samtrans.com and caltrain.com. Printed schedules and maps are also available at the Center for Student Life and Leadership Development in Building 17, Room 112.

STAY INFORMED IN AN EMERGENCY!

Sign up for emergency text message notifications today. Login to WebSMART at collegeofsanmateo.edu/webSMART. Click **Emergency Text Message Contact Information** then enter your cell phone number to receive important messages from the college(s) of your choice. *It's that easy!*

Residential Customer Local
Carrier Route Pre-Sort

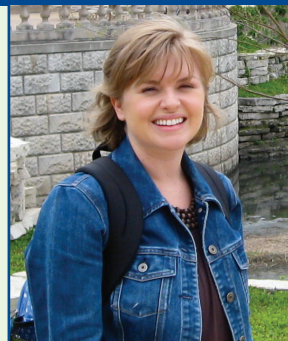
College of San Mateo prepared these students

to transfer to Stanford University and University of Illinois at Urbana-Champaign



“CSM laid the foundation for my success; if you work hard, study hard and thrive here, I guarantee it can do the same for you.”

–Luis Alvarez



“My overall experience at CSM helped me develop personally, intellectually and culturally and contributed greatly to a successful transfer experience.”

–Richael Young

Recent CSM transfer students have been accepted to the following colleges and universities:

University of California

UC Berkeley
UC Davis
UC Irvine
UC Los Angeles
UC Riverside
UC San Diego
UC Santa Barbara
UC Santa Cruz

California State University

Cal Poly Pomona
Cal Poly San Luis Obispo
CSU Chico
CSU East Bay
CSU Fullerton
CSU Long Beach
CSU Los Angeles

CSU Monterey Bay
CSU Sacramento
CSU San Marcos
Humboldt State University
San Diego State University
San Francisco State
San Jose State University
Sonoma State University

Out of State Colleges and Private Colleges and Universities*

Academy of Art University
Arizona State University
California College of the Arts
Carson-Newman College
Central Methodist University
Chapman University

Colorado State University
Cornell University
Faulkner University
Georgia State University
Hastings College
Long Island University
Louisiana State University
Menlo College
Midwestern State University
Northern Arizona University
Notre Dame de Namur University
Oregon State University
Palo Alto University
Santa Clara University
Southeastern Louisiana University

Stanford University
Tarleton State University
University of Arizona
University of Hawaii
University of Nevada, Reno
University of Oregon
University of San Diego
University of San Francisco
University of Southern California
Vanderbilt University
Washington State University
William Jessup University

**includes full and partial scholarships for CSM student-athletes*



Board of Trustees San Mateo County Community College District

Karen Schwarz, President
Patricia Miljanich, Vice President-Clerk
Richard Holober
Dave Mandelkern
David Zay Latt, Student Trustee 2013/14
Ron Galatolo, District Chancellor

Accuracy Statement

College of San Mateo and the San Mateo County Community College District have made every reasonable effort to determine that everything stated in this schedule is accurate. Courses and programs offered, together with other information contained herein, are subject to change without notice by the administration of College of San Mateo for reasons related to student enrollment or level of financial support, or for any other reason, at the discretion of the College. The College and the District further reserve the right to add, amend or repeal any of their rules, regulations, policies and procedures, in conformance with applicable laws.

Use of Photography

College of San Mateo, a non-profit California Community College, reserves the right to take and use photographs, video and electronic images of students and visitors taken on college property and at college-sponsored events for marketing and promotional purposes. Objection must be made in writing to the Community Relations & Marketing Office.

This publication is produced by CSM's Community Relations and Marketing Department. It is available upon request in an alternate format by calling College of San Mateo's Disability Resource Center at (650) 574-6438.