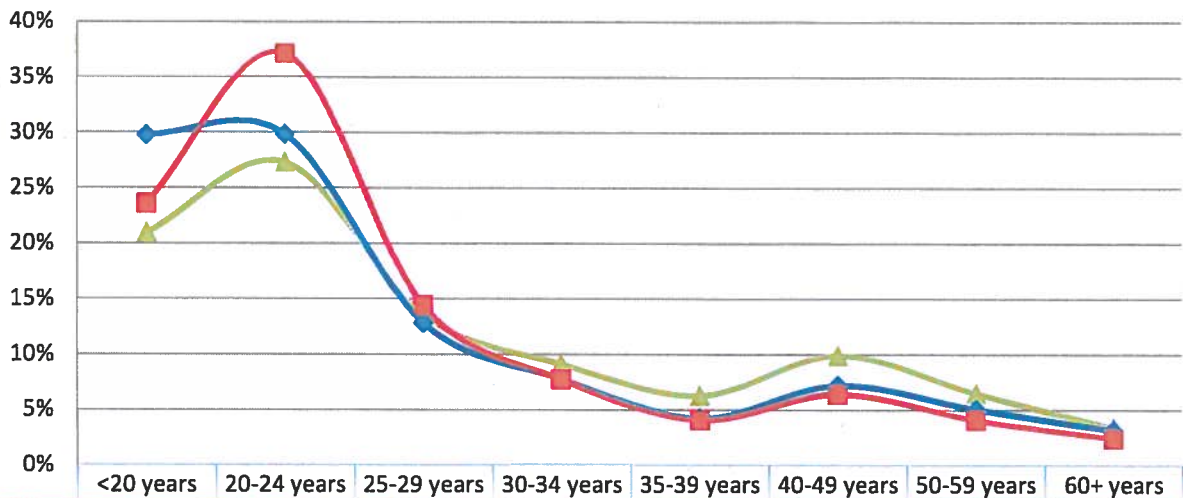
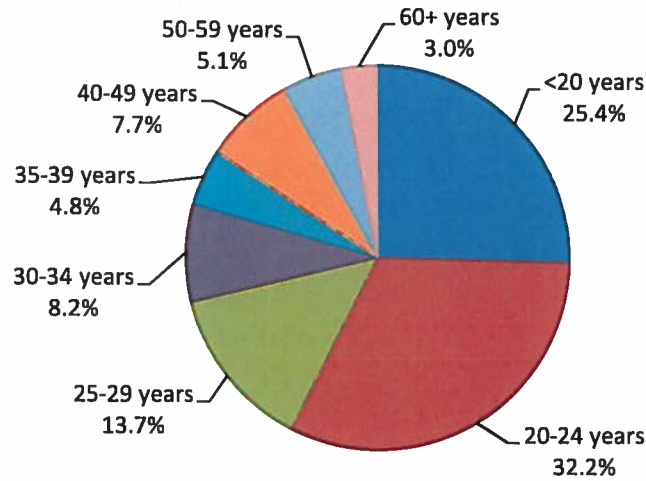


Fall 2012 Student Age Distribution



	<20 years	20-24 years	25-29 years	30-34 years	35-39 years	40-49 years	50-59 years	60+ years
Cañada	21.0%	27.3%	13.5%	9.1%	6.3%	9.9%	6.5%	3.4%
CSM	29.8%	29.8%	12.9%	7.8%	4.3%	7.2%	5.1%	3.2%
Skyline	23.6%	37.1%	14.4%	7.8%	4.1%	6.4%	4.1%	2.4%

District Student Age Distribution - Fall 2012



Avg Age:
 Cañada: 29.4
 CSM: 27.3
 Skyline: 26.6

Median Age:
 Cañada: 25
 CSM: 22
 Skyline: 22

3 year Trend

Age	Cañada			CSM			Skyline			District		
	Fa 2010	Fa 2011	Fa 2012	Fa 2010	Fa 2011	Fa 2012	Fa 2010	Fa 2011	Fa 2012	Fa 2010	Fa 2011	Fa 2012
<20 years	1,509	1,460	1,466	3,022	3,064	2,960	2,514	2,411	2,384	7,045	6,935	6,810
20-24 years	1,851	1,841	1,908	2,914	2,994	2,966	3,648	3,741	3,752	8,413	8,576	8,626
25-29 years	1,056	1,049	946	1,402	1,354	1,279	1,429	1,480	1,458	3,887	3,883	3,683
30-34 years	650	639	638	823	837	776	713	748	785	2,186	2,224	2,199
35-39 years	496	478	439	561	511	425	484	443	414	1,541	1,432	1,278
40-49 years	826	790	692	887	842	717	683	706	651	2,396	2,338	2,060
50-59 years	515	463	454	622	597	504	461	455	415	1,598	1,515	1,373
60+ years	319	272	235	354	337	316	246	252	245	919	861	796