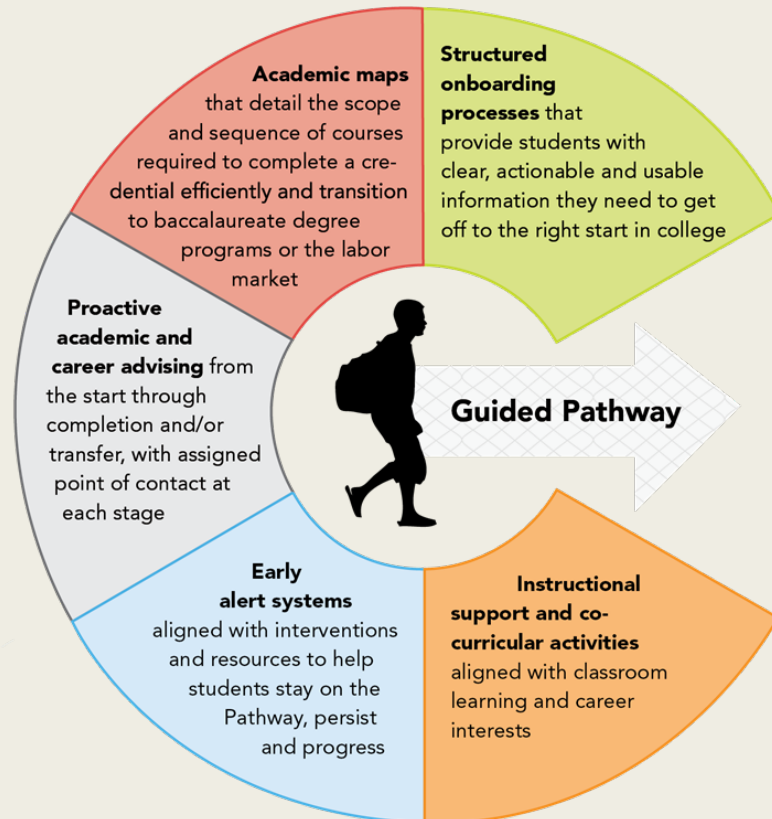


GUIDED PATHWAYS



College of San Mateo



[Example of Bakersfield](#)

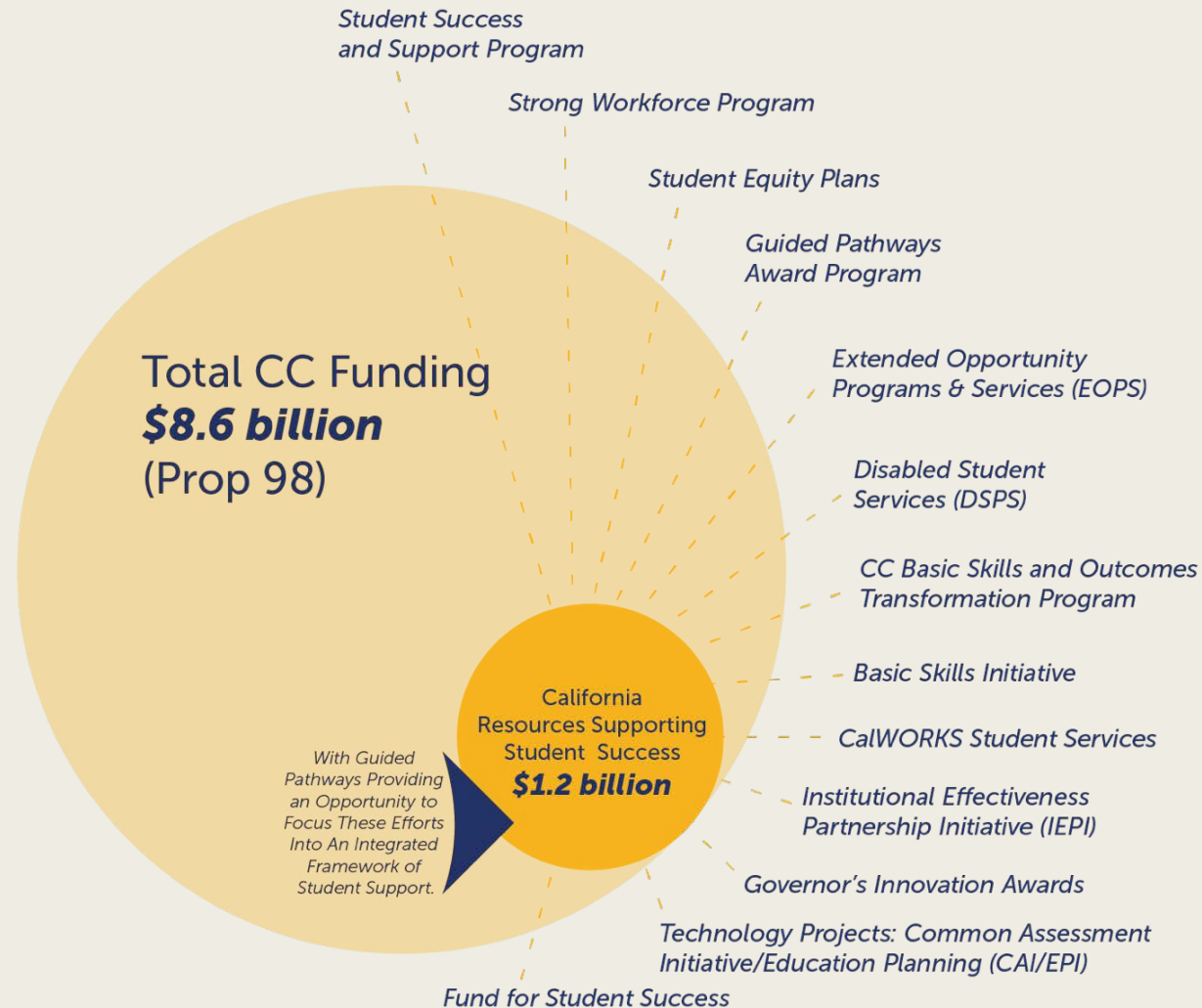
Agenda

Outcomes:

- *Examine progression and review student perspective*
- *Increase participation in Guided Pathways planning*
 - Introductions – [Your responses](#) 20 min
 - [Guided Pathways at CSM](#): Defining the goal and clarifying the process
 - *Overview and discussion - 40 min*
 - Review the work plan [Work plan](#) (due to IPC- Feb 23 and State March 30) – 20 min
 - Next steps - 10 min

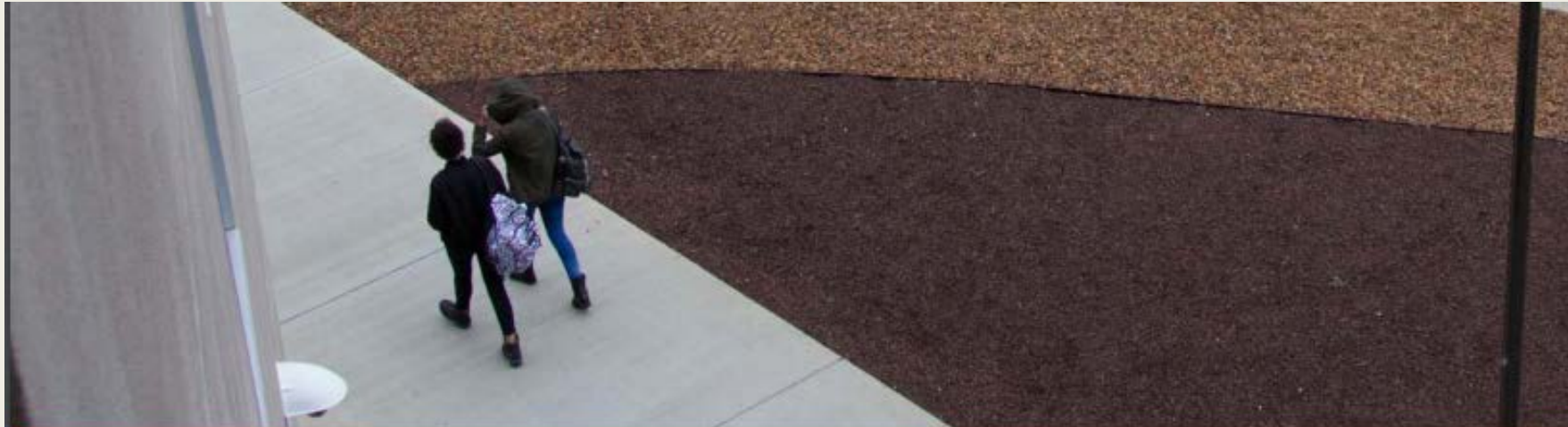
Guided Pathways Funding

Leverages ALL CCC Funding in Support of Student Success



Guided Pathways at CSM - Spring 2017

Career Ladders Project Inquiry



August 2017

Bringing Student Voices to Guided Pathways Inquiry and Design

Findings From Student Focus Groups at Two California Community Colleges

Mina Dadgar, Elisha Smith Arrillaga, Dina Buck, Brook Sinclair, Chase Fischerhall, and Kenly Brown

Student voices

“I found out about a lot of resources after the third or fourth semester, and I’m like, ‘Wow. These exist. It’s too late for me to join that now.’”

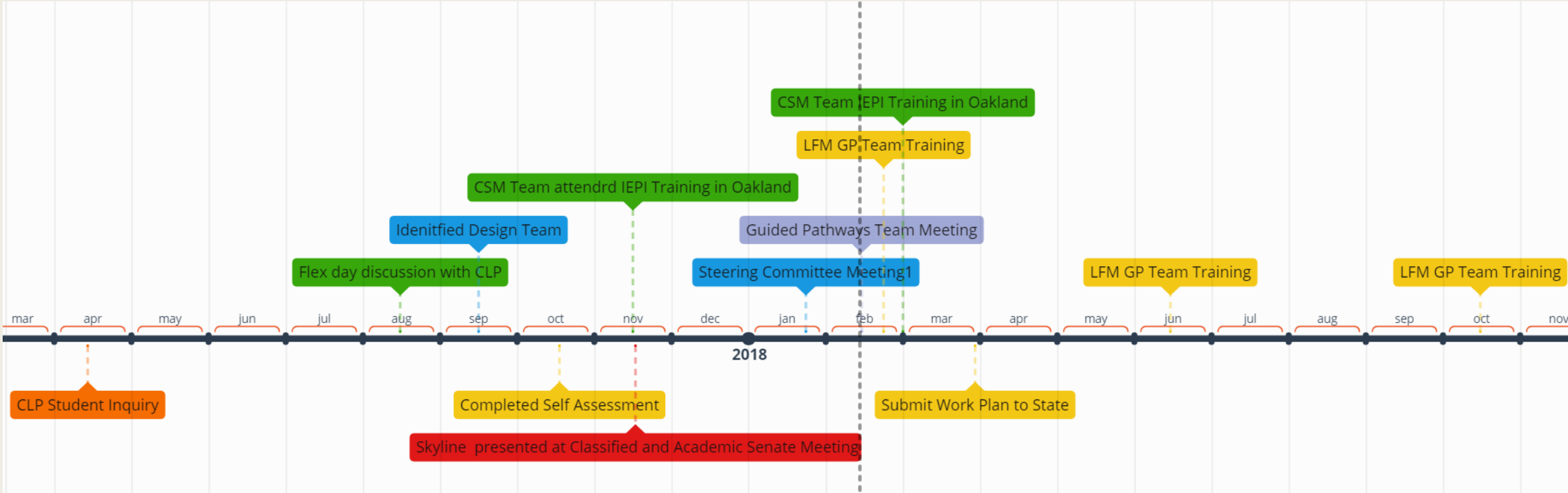
“I went to the bookstore, and I saw that this one other teacher was teaching about mass incarceration... I changed to take that class..., but I wish that this had happened sooner, and I wish that it happens more often.”

“At least for me, it was a lot of not knowing where to go. Like communications. Okay, where do you go from there? Do I become a professor? Do I work in TV? What kind of jobs do people have? It sounds corny, but are they happy in those jobs?”

Student Perspective

- Many students find choosing a major to be challenging.
- Choosing courses and getting into the right ones is often challenging.
- Students value support services when they can access them, but many are unaware of the wide range of supports available.
- Students would prefer to see the same counselor every time and would like to see counselors who specialize in their area of interest or major.
- Students yearn for a sense of community and peer connection at their colleges. They also seek culturally relevant curricula and diversity in their educational experience.

Timeline



Steering Committee meetings: 2:00-4:00 pm Second and Fourth Wednesday, beginning Jan 24, 2018
Guided Pathways Team meetings 2:00-4:00 pm Second Wednesday, beginning February 14, 2018

Key Elements of Guided Pathways



Guided Pathways at CSM

Guided Pathways LFM Team

Guided Pathways Team

Inquiry Team

Design Team

Implementation Team

Steering Committee



Four Pillars of Guided Pathways



Create clear curricular pathways to employment and further education.



Help students choose and enter their pathway.



Help students stay on their path.



Ensure that learning is happening with intentional outcomes.

Join the Guided Pathways team to provide:

- **Guidance in choosing a major and understanding its connection to various careers**
- **Clearer course sequencing and more course availability**
- **Better awareness of support services and counselors with academic specialties**
- **A sense of community on campus and peer-to-peer support**

Work Plan Tools

- Review the work plan [Work plan](#) (due to IPC- Feb 23 and State March 30) – 20 min

Inquiry	1. Cross-Functional Inquiry
	2. Shared Metrics
	3. Integrated Planning Design
Design	4. Inclusive Decision-Making Structures
	5. Intersegmental Alignment
	6. Guided Major and Career Exploration Opportunities
	7. Improved Basic Skills
	8. Clear Program Requirements Implementation
Implementation	9. Proactive and Integrated Academic and Student Supports
	10. Integrated Technology Infrastructure
	11. Strategic Professional Development
	12. Aligned Learning Outcomes
	13. Assessing and Documenting Learning
	14. Applied Learning Opportunities

NEXT Steps

- Feb 22 LFM Team
- Feb 23, IPC Work Plan report
- Feb 28, Next steering committee meeting Flex day
- March 1 and 2 - IEPI Training in Oakland
- March 8, Flex day
- **Next Guided Pathways Team meeting March 14**