

AA-T/AS-T ADVISING INFORMATION FOR COUNSELORS

This document is intended to assist counselors in advising students who have decided upon a major, plan to transfer to a CSU campus, and are considering pursuing an AA-T or AS-T degree. It was developed by the CCC Articulation Officer Regional Representatives using information available as of April 19, 2012.

Which CSU major options are available for students interested in pursuing an AA-T/AS-T degree ? See www.sb1440.org for a list.

Which students should pursue the degree? See the AA-T / AS-T Advising Flowchart. In general, the degree is advantageous for:

- *Students preparing for impacted CSU majors or campuses.* In most cases, students with an AA-T/AS-T degree will have a higher admission priority to impacted majors and campuses than other students in their admission category. See www.sb1440.org for more information.
- *Students seeking an associate degree in addition to transfer preparation.*
- *Students who want to prepare broadly for more than one CSU.* Many AA-T/AS-T degrees are designed to accommodate the varying requirements of different CSU campuses.
- *Students attending a CCC that does not have major preparation articulation to their intended CSU campus.* Major courses taken as part of the AA-T/AS-T degree are likely to fulfill many or all major preparation requirements at any CSU campus that accepts the degree regardless of whether the CCC and CSU campuses have established major preparation articulation.

What course selection advice should I give to students? Most students should complete all required transfer coursework in addition to the AA-T/AS-T major requirements. Specifically:

- *Minimum admission requirements:* Students must meet all CSU minimum admission requirements, including 60 CSU-transferable units, a 2.0 cumulative CSU-transferable GPA (2.4 for nonresident students or 2.8 for international students), and the “golden four” (most CSU campuses require a letter grade of “C” or better in each “golden four” course for admission).
- *General education (GE):* Students must complete a full CSU GE or IGETC pattern (if IGETC is selected students should complete the CSU version). No additional/“local” GE or graduation requirements may be required of students completing these degrees.
- *Major coursework:* Students must complete the major coursework specified for the AA-T/AS-T degree. In some cases these courses will also fulfill GE or other requirements (double-counting.)
- *Major preparation/impaction requirements:* Students completing an AA-T/AS-T degree that has been deemed similar by the receiving CSU campus do not have to complete any additional courses before transferring. However, they may need to meet other non-curricular criteria such as GPA requirements, auditions, or portfolio reviews. In addition, they may have to complete any remaining major preparation/impaction requirements after transfer. Therefore, students should consider selecting restricted or open elective options that also meet GE, major preparation/impaction, or other requirements for their intended CSU campus and major. See www.assist.org for more information.
- *Other requirements:* Students are encouraged to complete the CSU American Institutions requirement as well as CSU campus-specific graduation requirements. Many courses that fulfill these requirements also meet CSU GE or IGETC requirements.

How does a student receive the benefits of the AA-T/AS-T degree? Students indicate their intention to earn an AA-T/AS-T when completing the CSU online application at www.csumentor.edu.

For more information: Information and updates are available at www.sb1440.org and www.c-id.net.

AA-T/AS-T ADVISING INFORMATION FOR COUNSELORS

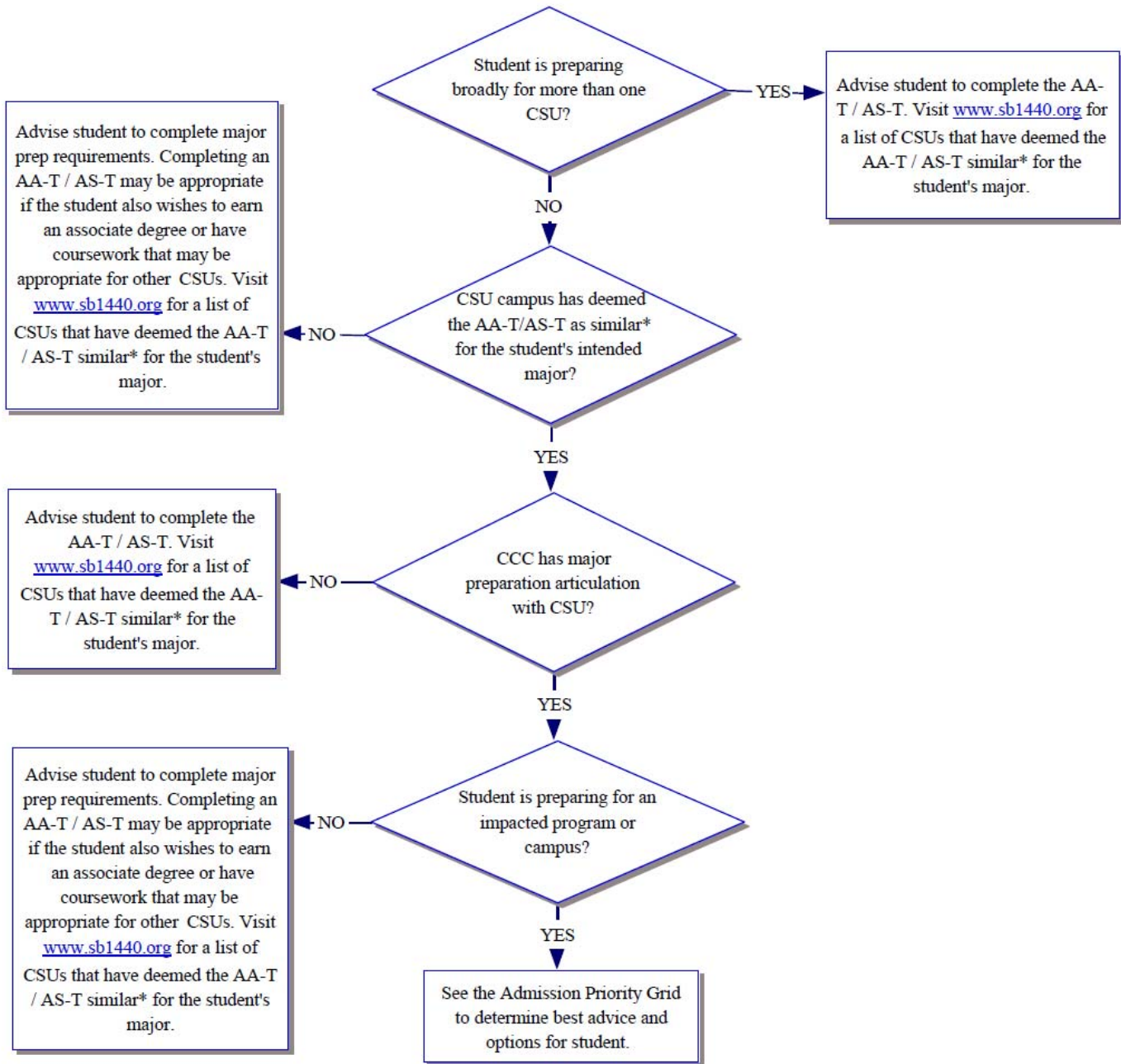
Advantages	Disadvantages
<ul style="list-style-type: none"> • Local admission priority for nonlocal students transferring to an impacted campus or major who earn an AA-T/AS-T from a CCC in the CSU's local area • GPA bump/reduced GPA standards for all students transferring to an impacted major and some students transferring to an impacted campus • Deferral of major preparation/curricular impaction requirements for some students depending on CSU campus and major • As close to "common preparation" as possible for most CSU campuses for students preparing broadly for more than one CSU campus • Facilitation of associate degree completion by elimination of local graduation requirements for students whose CCC campus has such requirements • Facilitation of transfer to CSUs where no major preparation articulation exists for some students depending on CCC campus, CSU campus and major • Redirection to an alternate CSU campus for all students who are not admitted to any CSU campus they applied to 	<ul style="list-style-type: none"> • Additional coursework that will only apply as open elective credit after transfer for some students depending on CCC campus, CSU campus and major • Uncompleted major preparation coursework required after transfer for some students depending on CSU campus and major; any coursework not met at the CCC will be completed at the CSU within the remaining 60 units • Loss of local admission priority to the local CSU campus for local students who earn an AA-T/AS-T from a nonlocal CCC • Additional time and units spent at CCC for students who are undecided on a major or may change majors • Increased complexity in transfer planning for some students

ADVISING NOTES

1. The "60 units after transfer" pertains to the major/degree requirements only; students who change majors after transfer or seek additional awards (such as a minor) may need to complete more than 60 units.
2. The "60 unit" limitations pertain to degree requirements, not student course taking; students who have completed more than 60 total units may still earn an AA-T/AS-T.
3. CSU campuses may restrict enrollment to admit only those students with an AA-T/AS-T during certain terms (e.g. Spring 2013).
4. CCC campuses are required to accept equivalent C-ID designated courses and encouraged to accept other courses completed at other campuses in fulfillment of AA-T/AS-T major requirements.

AA-T/AS-T ADVISING INFORMATION FOR COUNSELORS

AA-T / AS-T Advising Flowchart



* "Similar" means that for students earning an AA-T/AS-T in the appropriate major, the CSU campus:

1. Will apply agreed-upon SB-1440 admission priority rules.
2. Can require no more than 60 units after transfer in order to complete the bachelor's degree in an aligned CSU major or specialization at that CSU campus.

See www.sb1440.org for a list of CSUs that have deemed the AA-T/AS-T similar for the student's major.

AA-T/AS-T ADVISING INFORMATION FOR COUNSELORS

Admission Priority Grid**

		CSU Campus Characteristics		
		No Impaction	Impacted Campus Nonimpacted Program	Impacted Program
CCC Student and Degree Combinations	Local or Nonlocal Student AA-T/AS-T from Local CCC	A	A	D
	Local or Nonlocal Student AA-T/AS-T from Nonlocal CCC	A	B	E
	Local Student No AA-T/AS-T	A	A	F
	Nonlocal Student No AA-T/AS-T	A	C	G

****See the following page for definitions of terms used in this grid**

	Admission standard	“GPA Bump”
A	CSU minimum admission requirements. Visit www.csumentor.org/planning/transfer for more information	None needed – all students meeting CSU minimums are admitted
B	Campus impaction criteria for nonlocal students as defined in the CSU campus’ website, catalog, or admission materials	0.2 GPA index point increase when evaluated against nonlocal students without an AA-T/AS-T
C	Campus impaction criteria for nonlocal students as defined in the CSU campus’ website, catalog, or admission materials	None
D	Noncurricular program impaction criteria for <u>local</u> students as defined in the CSU campus’ website, catalog, or admission materials	0.1 GPA index point increase* when evaluated against <u>local</u> students without an AA-T/AS-T
E	Noncurricular program impaction criteria for <u>nonlocal</u> students as defined in the CSU campus’ website, catalog, or admission materials	0.1 GPA index point increase* when evaluated against <u>nonlocal</u> students without an AA-T/AS-T
F	Noncurricular program impaction criteria for <u>local</u> students as defined in the CSU campus’ website, catalog, or admission materials	None
G	Noncurricular program impaction criteria for <u>nonlocal</u> students as defined in the CSU campus’ website, catalog, or admission materials	None

* The 0.10 GPA index point increase and deferral of curricular impaction requirements only applies to programs with 20 or more seats available to transfer students. Currently all CSU programs that have declared similarity to an AA-T/AS-T fit this category.

AA-T/AS-T ADVISING INFORMATION FOR COUNSELORS

Admission Priority Grid Definitions of Terms

Local Student: A student who meets the criteria defined under “Local Admission Area – Upper Division Transfer” for the CSU campus in the Local Admission and Service Areas chart available at www.calstate.edu/sas/publications/.

Nonlocal Student: A student who does not meet the criteria defined under “Local Admission Area – Upper Division Transfer” for the CSU campus in the Local Admission and Service Areas chart available at www.calstate.edu/sas/publications/.

AA-T/AS-T from Local CCC: An AA-T or AS-T degree that is:

- 1) Accepted at the CSU campus for the student’s intended bachelor’s degree program as listed in the CSU Similar Degrees by Campus and Discipline/TMC chart available at <http://www.sb1440.org/Counseling.aspx>, **and**
- 2) Awarded by a CCC listed under “Local Admission Area – Upper Division Transfer” for the CSU campus in the Local Admission and Service Areas chart available at www.calstate.edu/sas/publications/ (**Note:** in making this determination, ignore all criteria listed on the chart not related to defining CCCs such as “30 units,” “majority of coursework,” or “last school attended.”)

AA-T/AS-T from Nonlocal CCC: An AA-T or AS-T degree that is:

- 1) Accepted at the CSU campus for the student’s intended bachelor’s degree program as listed in the CSU Similar Degrees by Campus and Discipline/TMC chart available at <http://www.sb1440.org/Counseling.aspx>, **and**
- 2) **Not** awarded by a CCC listed under “Local Admission Area – Upper Division Transfer” for the CSU campus in the Local Admission and Service Areas chart available at www.calstate.edu/sas/publications/ (**Note:** in making this determination, ignore all criteria listed on the chart not related to defining CCCs such as “30 units,” “majority of coursework,” or “last school attended.”)

No AA-T/AS-T: No AA-T or AS-T degree awarded, **or** an AA-T or AS-T degree that is not accepted at the CSU campus for the student’s intended bachelor’s degree program as listed in the CSU Similar Degrees by Campus and Discipline/TMC chart available at <http://www.sb1440.org/Counseling.aspx>.

No Impaction: The CSU campus is **not** designated as impacted for upper-division transfers as listed on the CSU Campus Impaction Information chart available at www.calstate.edu/sas/impaction-campus-info.shtml **and** the student’s intended bachelor’s degree program is **not** designated as impacted as listed on the Undergraduate Impacted Programs Matrix chart available at www.calstate.edu/sas/documents/impactedprogramsmatrix.pdf.

Impacted Campus: The CSU campus is designated as impacted for upper-division transfers as listed on the CSU Campus Impaction Information chart available at www.calstate.edu/sas/impaction-campus-info.shtml.

Impacted Program: The student’s intended bachelor’s degree program is designated as impacted as listed on the Undergraduate Impacted Programs Matrix chart available at www.calstate.edu/sas/documents/impactedprogramsmatrix.pdf.