

CSM

<http://collegeofsanmateo.edu/>

SPRING 2007

**BIOLOGY 250
HUMAN ANATOMY**

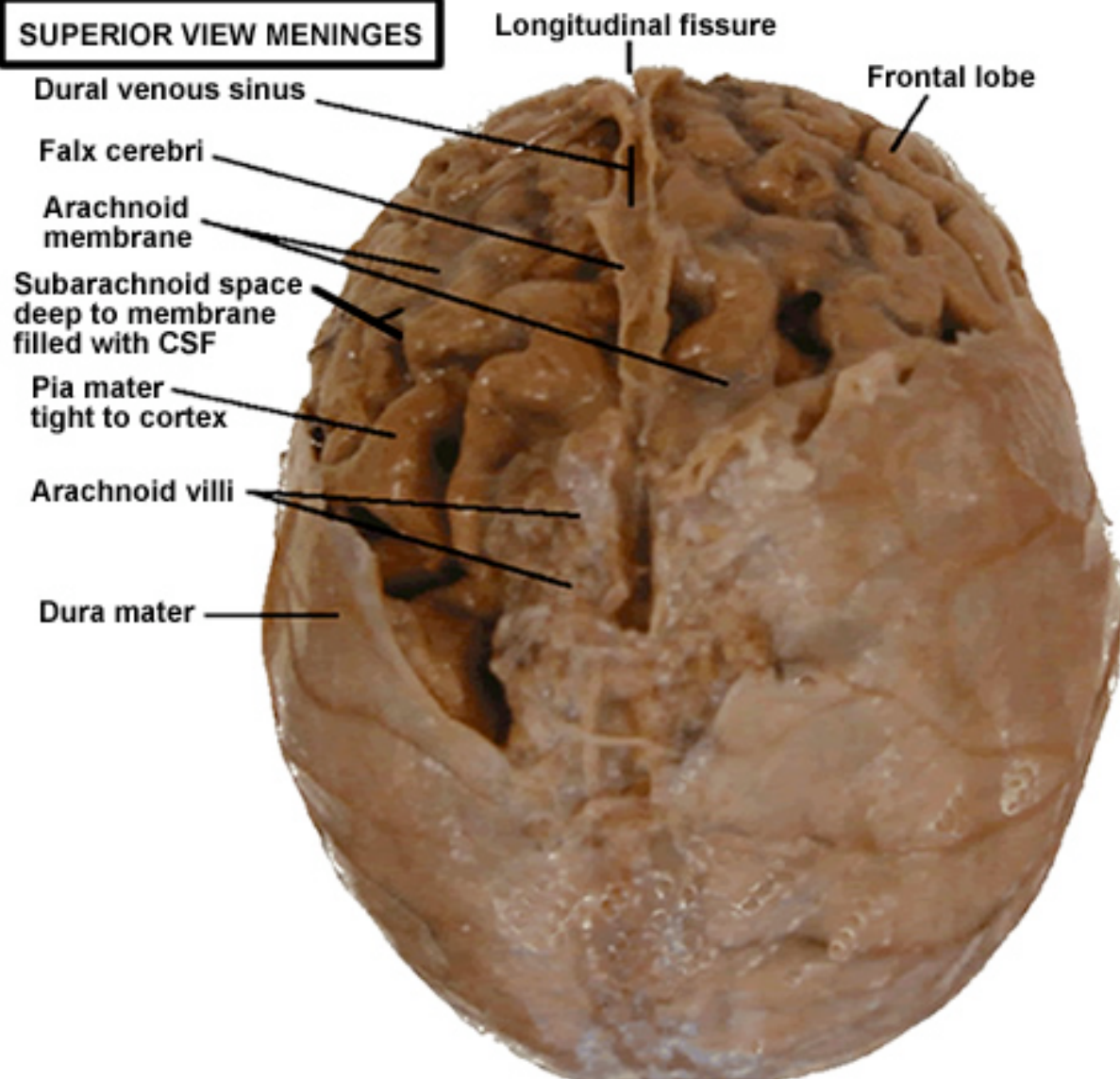
Brain & Meninges study guide

Photography: Zac Bucher

Labels: Zac Bucher

Content supervisor: Professor Theresa Martin

SUPERIOR VIEW MENINGES



POSTERIOR VIEW MENINGES

Dura mater

Pia mater

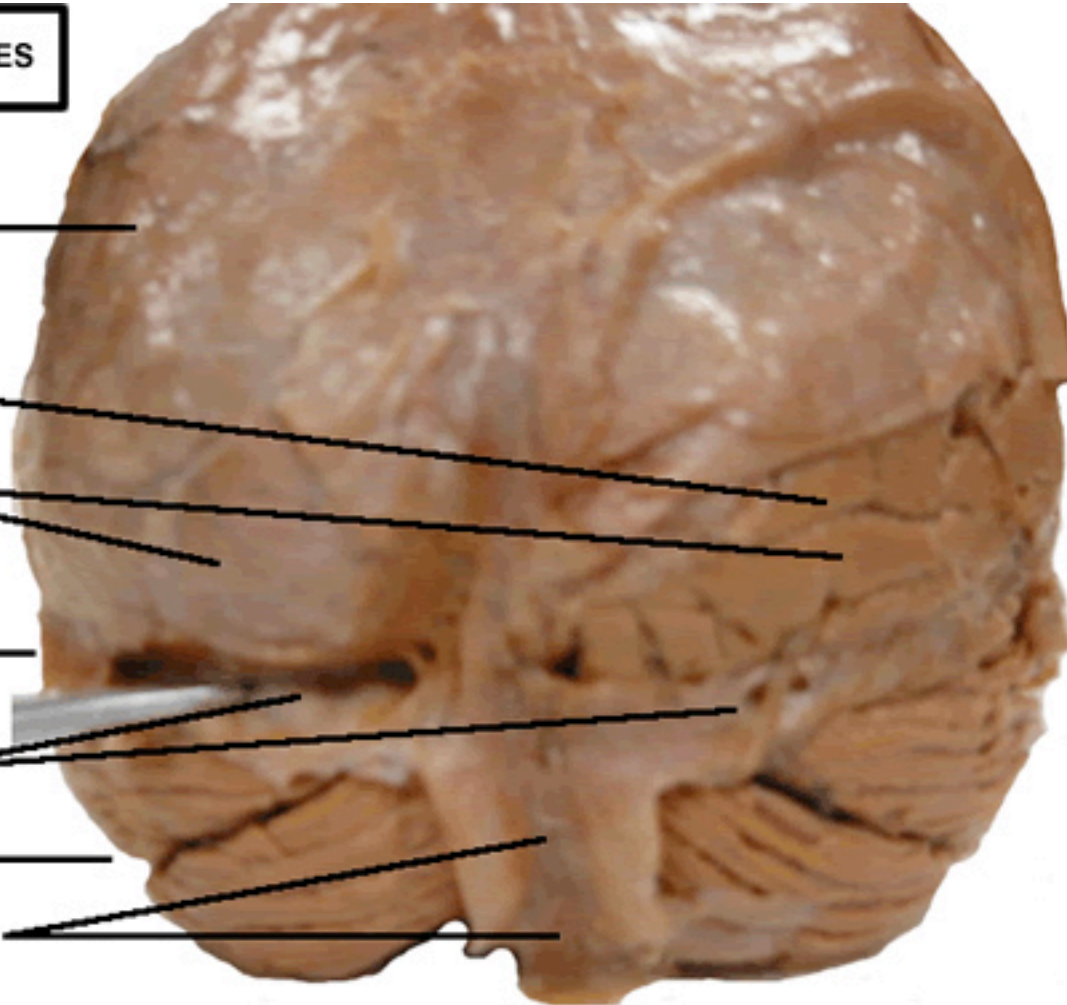
Occipital lobe

Transverse fissure

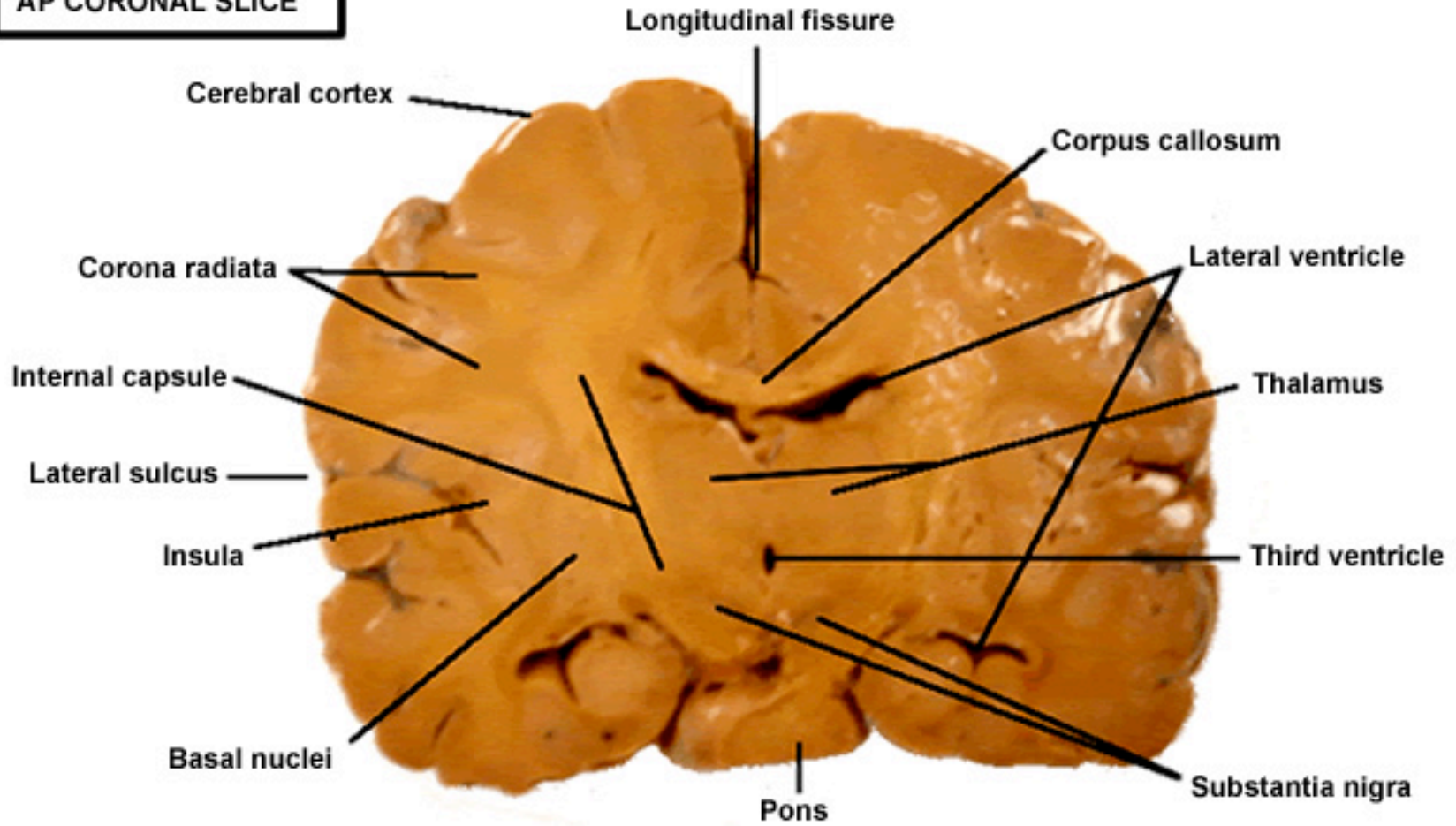
Tentorium cerebelli

Cerebellum

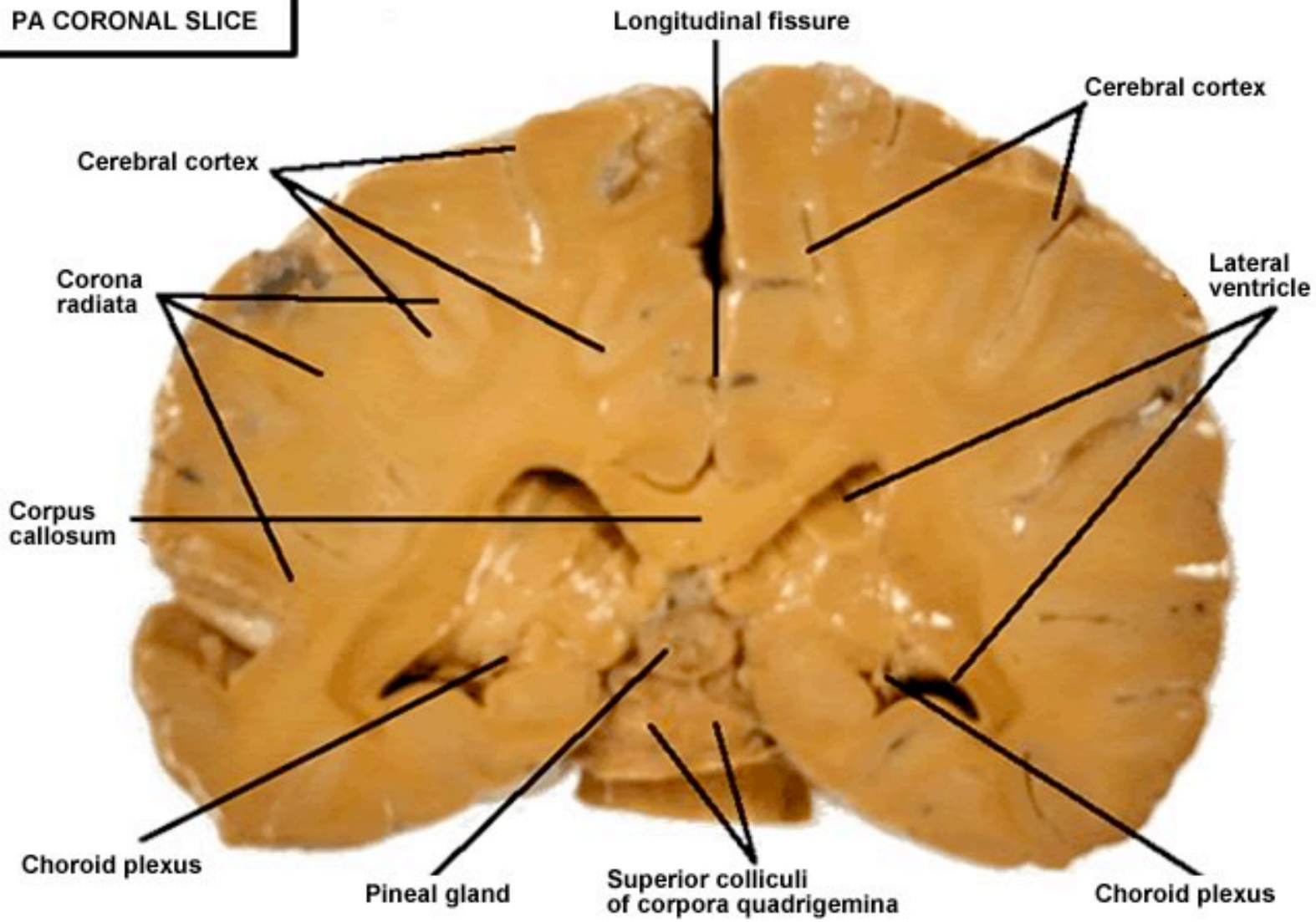
Falx cerebelli



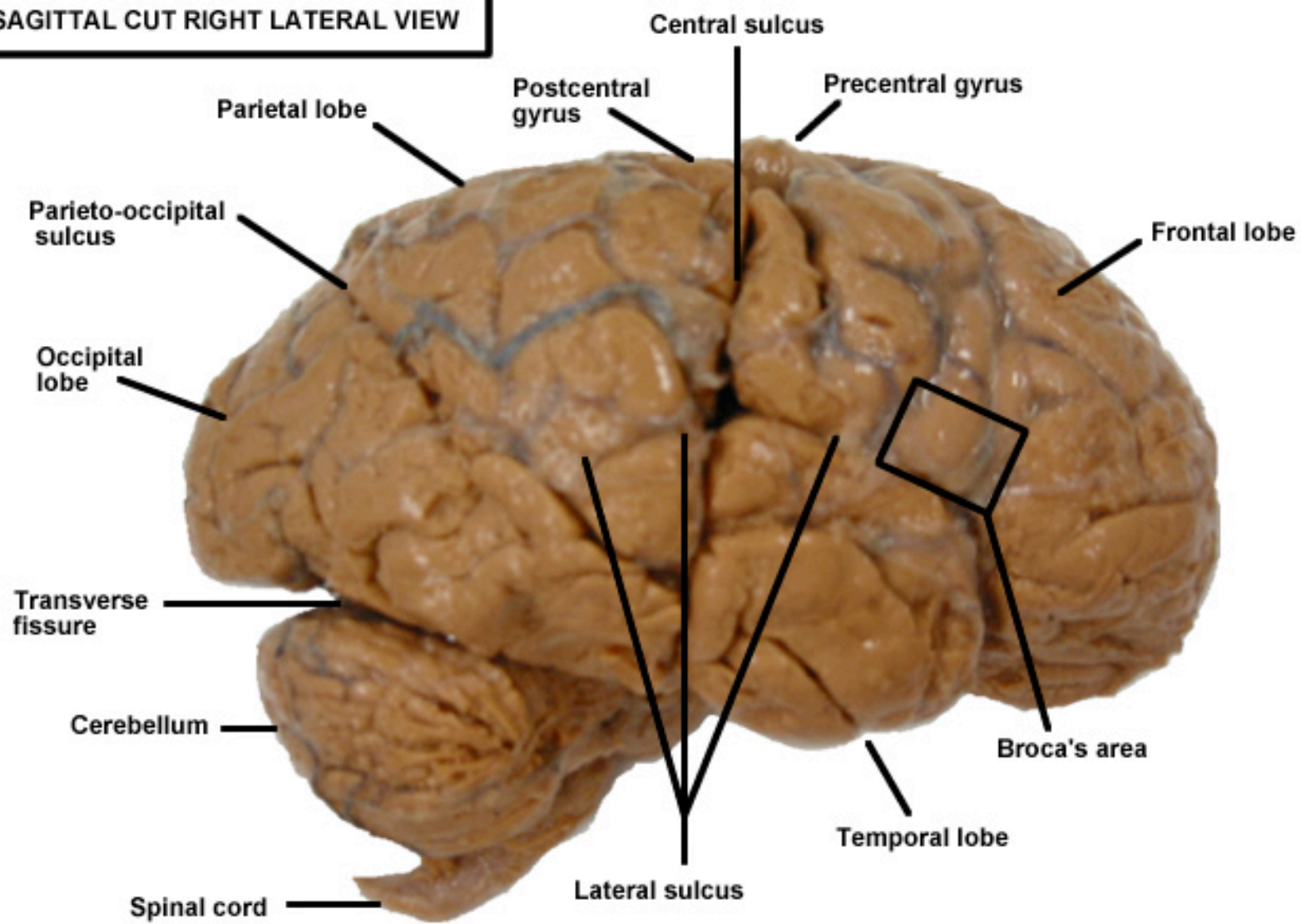
AP CORONAL SLICE



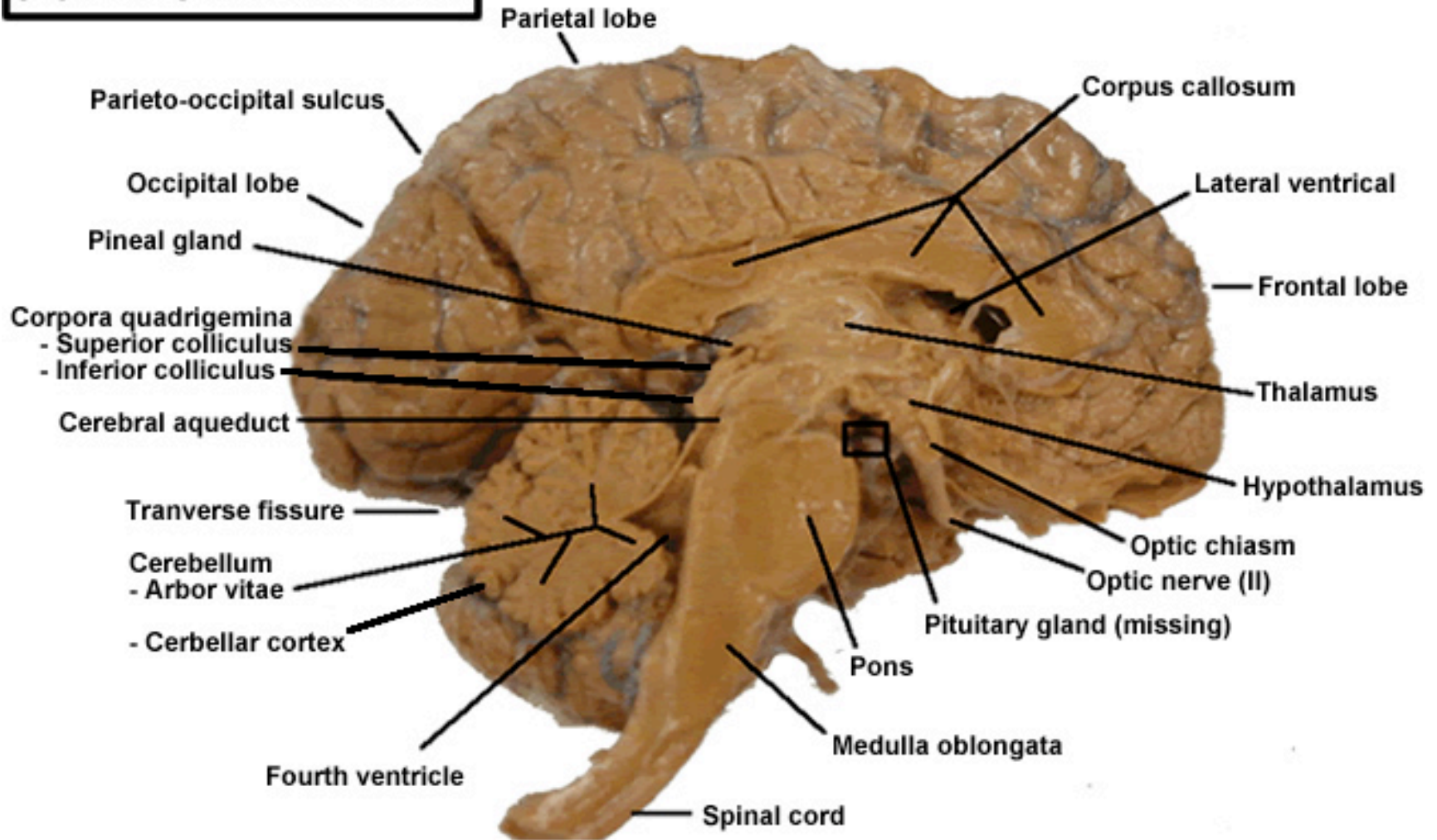
PA CORONAL SLICE



SAGITTAL CUT RIGHT LATERAL VIEW



SAGITTAL CUT LEFT MEDIAL VIEW



**INFERIOR VIEW
CRANIAL NERVES**

